

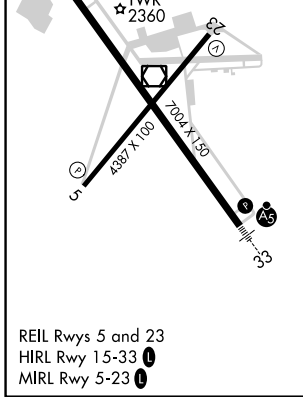
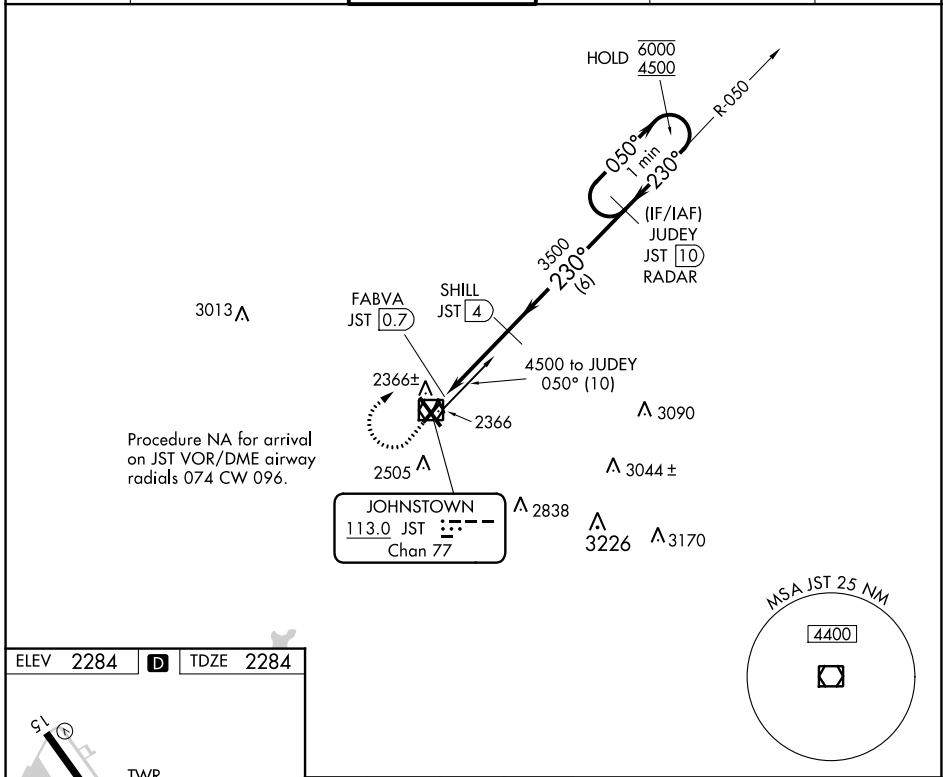
VOR/DME JST <b>113.0</b> Chan <b>77</b>	APP CRS <b>230°</b>	Rwy Idg TDZE Apt Elev	<b>4387</b> <b>2284</b> <b>2284</b>
---	------------------------	-----------------------------	---

# VOR Z RWY 23

JOHN MURTHA JOHNSTOWN/CAMBRIA COUNTY (JST)

DME required.	MISSED APPROACH: Climb to 3000 then climbing right turn to 4500 on heading 075° and JST VOR/DME R-050 to JUDEY/JST 10 DME/RADAR and hold.
<b>⚠</b> Rwy 23 helicopter visibility reduction below 3/4 SM NA.	

ATIS <b>118.325</b>	JOHNSTOWN APP CON ★ <b>121.2 299.2</b>	JOHNSTOWN TOWER ★ <b>125.75</b> (CTAF) <b>0</b>	GND CON <b>121.6</b>	CLNC DEL <b>126.85 235.775</b>	UNICOM <b>122.95</b>
------------------------	---	--	-------------------------	-----------------------------------	-------------------------



3000	4500	JST R-050	JUDEY JST 10 RADAR	One Minute Holding Pattern
CATEGORY	A	B	C	D
S-23	2620-1 336 (400-1)			
<b>C</b> CIRCLING	2700-1 416 (500-1)	2880-1 596 (600-1)	2880-1½ 596 (600-1½)	3000-2¼ 716 (800-2¼)

# VOR Z RWY 23

NE-4, 07 SEP 2023 to 05 OCT 2023

NE-4, 07 SEP 2023 to 05 OCT 2023