

APP CRS	Rwy Idg	<b>7345</b>
<b>325°</b>	TDZE	<b>153</b>
	Apt Elev	<b>153</b>

# RNAV (GPS) RWY 32

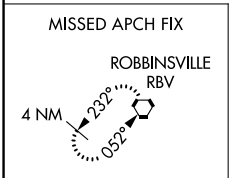
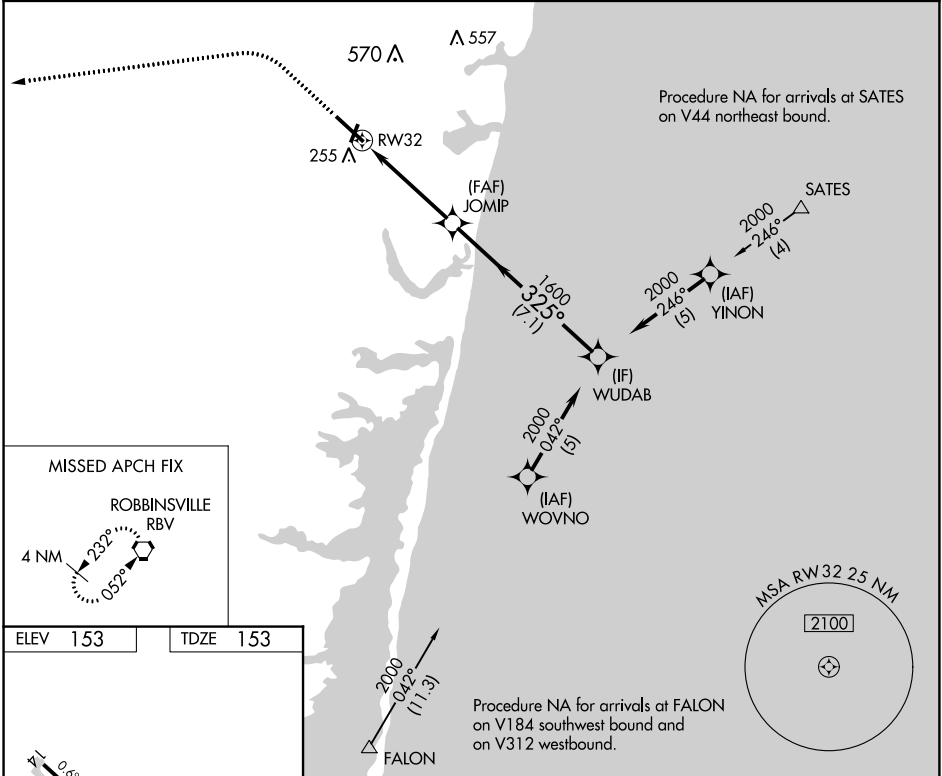
MONMOUTH EXEC (BLM)

RNP APCH.

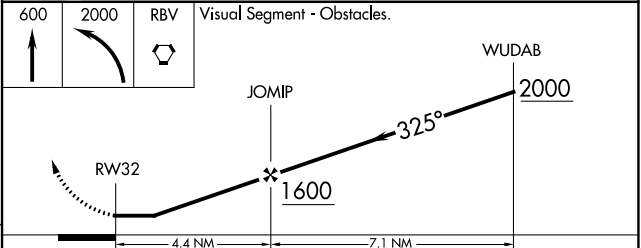
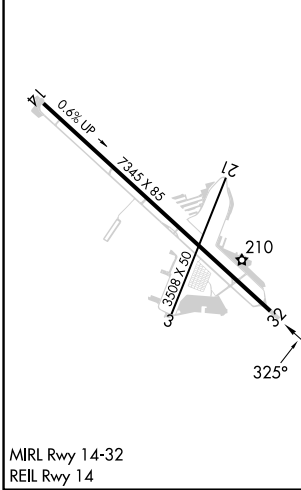
**▼** Circling Rwy 3, 21 NA at night. Rwy 32 helicopter visibility reduction below 3/4 SM NA.  
**▲** When local altimeter setting not received, use Lakehurst altimeter setting and increase all MDA 40 feet; increase LNAV Cat C/D and Circling Cat C/D visibility 1/4 SM.

**MISSED APPROACH:**  
 Climb to 600 then climbing left turn to 2000 direct RBV VORTAC and hold.

AWOS-3PT <b>121.625</b>	MC GUIRE APP CON <b>126.475 363.8</b>	CLNC DEL <b>126.15</b>	UNICOM <b>123.0 (CTAF)</b>
----------------------------	--	---------------------------	-------------------------------



ELEV 153	TDZE 153
----------	----------



CATEGORY	A	B	C	D
LNAV MDA	560-1	407 (500-1)	560-1 1/8	407 (500-1 1/8)
CIRCLING	560-1 407 (500-1)	620-1 467 (500-1)	880-2 727 (800-2)	880-2 1/4 727 (800-2 1/4)

NE-2, 07 SEP 2023 to 05 OCT 2023

NE-2, 07 SEP 2023 to 05 OCT 2023