

WAAS CH 69620 W14A	APP CRS 139°	Rwy Idg TDZE Apt Elev	4401 1319 1324
--	------------------------	-----------------------------	---

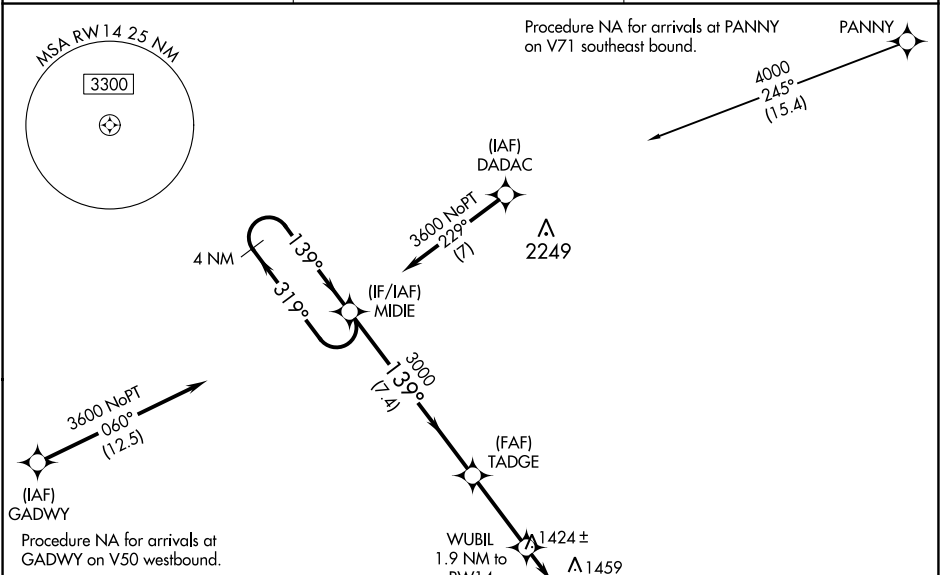
RNAV (GPS) RWY 14

BEATRICE MUNI (BIE)

⚠ For uncompensated Baro-VNAV systems, LNAV/VNAV NA below -17°C (2°F) or above 35°C (95°F).
⚠ DME/DME RNP-0.3 NA.

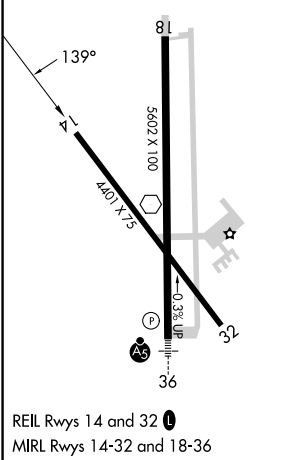
MISSED APPROACH: Climb to 3600 direct SHIRS and hold.

AWOS-3 125.325	MINNEAPOLIS CENTER 126.4 317.7	UNICOM 122.8 (CTAF) 0
--------------------------	--	--



Procedure NA for arrivals at GADWY on V50 westbound.

ELEV 1324	D	TDZE 1319
-----------	----------	-----------



REIL Rwy 14 and 32 **0**
 MIRL Rwy 14-32 and 18-36

	4 NM Holding Pattern	MIDIE	TADGE	WUBIL 1.9 NM to RW14	SHIRS
	3600	319°	139°	739°	3600
	GP 3.00°		3000	3000	
	TCH 45			*1960	
		7.4 NM	3.2 NM	0.7	1.2 NM
CATEGORY	A	B	C	D	
LPV DA		1569-1	250 (300-1)		
LNAV/VNAV DA		1569-1	250 (300-1)		
LNAV MDA	1760-1	441 (500-1)	1760-1 $\frac{3}{8}$	441 (500-1 $\frac{3}{8}$)	
C CIRCLING	1820-1	496 (500-1)	2000-2	2100-2 $\frac{1}{2}$	676 (700-2) / 776 (800-2 $\frac{1}{2}$)

NC-2, 07 SEP 2023 to 05 OCT 2023

NC-2, 07 SEP 2023 to 05 OCT 2023