

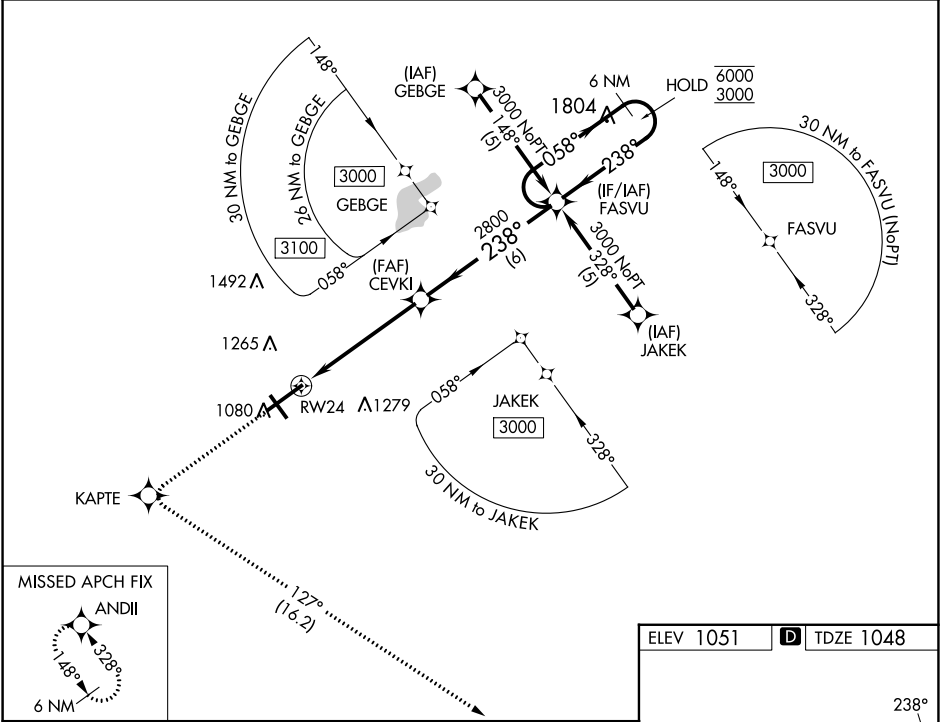
WAAS CH 97615 W24A	APP CRS 238°	Rwy Idg TDZE Apt Elev	9009 1048 1051
--	------------------------	-----------------------------	---

RNAV (GPS) RWY 24

SPRINGFIELD/BECKLEY MUNI (SGH)

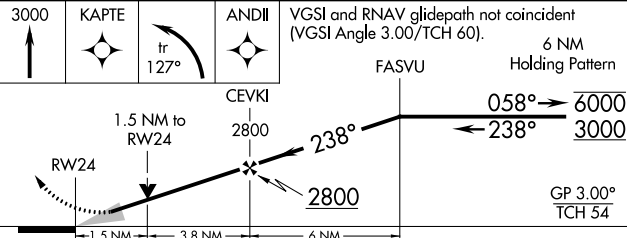
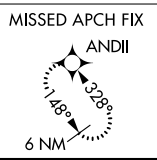
RNP APCH - GPS.	SSALR	MISSED APPROACH: Climb to 3000 direct KAPTE and left turn on track 127° to ANDII and hold.
<p>▼ For uncompensated Baro-VNAV systems, LNAV/VNAV NA below -17°C or above 54°C.</p> <p>▲ For inop ALS, increase LNAV/VNAV all Cats visibility to 1 SM.</p>		

AWOS-3PT 134.975	COLUMBUS APP CON 118.85 269.275	UNICOM 122.95 (CTAF) 1
----------------------------	---	----------------------------------



EC-2, 07 SEP 2023 to 05 OCT 2023

EC-2, 07 SEP 2023 to 05 OCT 2023



ELEV 1051	D TDZE 1048
-----------	--------------------

CATEGORY	A	B	C	D
LPV DA		1248-½	200 (200-½)	
LNAV/VNAV DA		1398-⅝	350 (400-⅝)	
LNAV MDA	1580-½	532 (600-½)	1580-1	532 (600-1)
C CIRCLING	1580-1	529 (600-1)	1580-1½ 529 (600-1½)	1620-2 569 (600-2)

HIRL Rwy 6-24 1
MIRL Rwy 15-33 1
REIL Rws 6, 15 and 33 1