

LOC I-SBY 108.7	APP CRS 319°	Rwy Idg 6400	TDZE 53	Apt Elev 53
---------------------------	------------------------	-----------------	------------	----------------

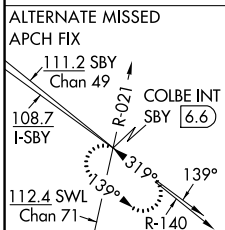
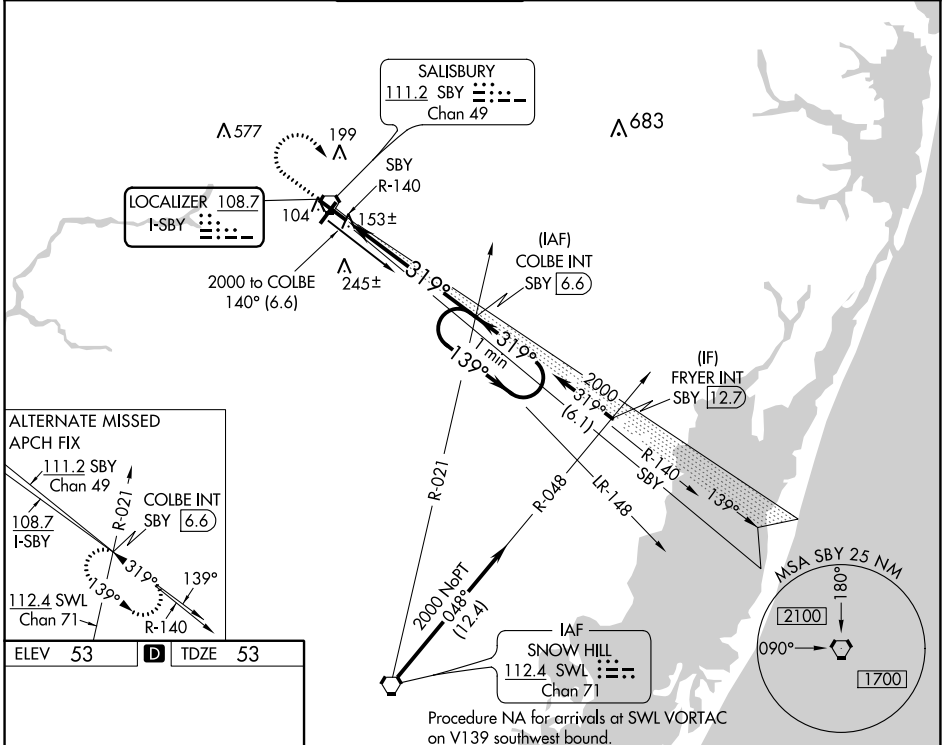
ILS or LOC RWY 32

SALISBURY-OCEAN CITY WICOMICO RGNL (SBY)

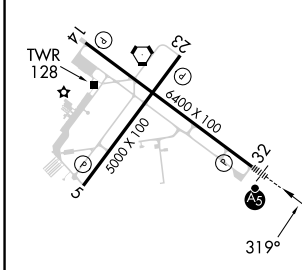
▼ When local altimeter setting not received, use Georgetown altimeter setting: increase DA to 305 feet; increase all MDA 60 feet and S-LOC 32 Cat C and Circling Cat D visibility $\frac{1}{4}$ SM.

MALS R MISSED APPROACH: Climb to 700 then climbing right turn to 2000 on heading 170° and on SBY VORTAC R-140 to COLBE INT/SBY VORTAC 6.6 DME and hold.

ASOS 118.325	PATUXENT APP CON★ 127.95 314.0	SALISBURY TOWER★ 119.425 (CTAF) 1	GND CON 123.775	CLNL DEL★ 123.775	UNICOM 122.95
------------------------	--	---	---------------------------	-----------------------------	-------------------------



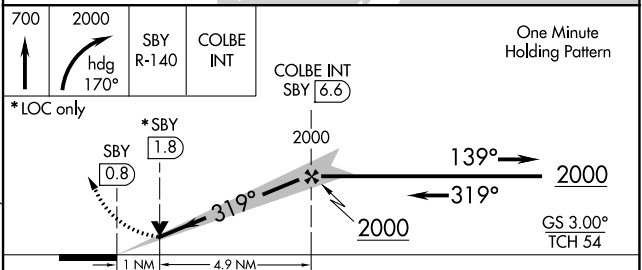
ELEV 53	D	TDZE 53
---------	---	---------



REIL Rwy 5, 14 and 23
MIRL Rwy 5-23
HIRL Rwy 14-32

FAF to MAP 5.9 NM

Knots	60	90	120	150	180
Min:Sec	5:54	3:56	2:57	2:22	1:58



CATEGORY	A	B	C	D
S-ILS 32	253- $\frac{1}{2}$ 200 (200- $\frac{1}{2}$)			
S-LOC 32	420- $\frac{1}{2}$ 367 (400- $\frac{1}{2}$)			420- $\frac{3}{4}$ 367 (400- $\frac{3}{4}$)
CIRCLING	480-1 427 (500-1)	520-1 467 (500-1)	560-1 $\frac{1}{2}$ 507 (600-1 $\frac{1}{2}$)	700-2 647 (700-2)

NE-3, 07 SEP 2023 to 05 OCT 2023

NE-3, 07 SEP 2023 to 05 OCT 2023