

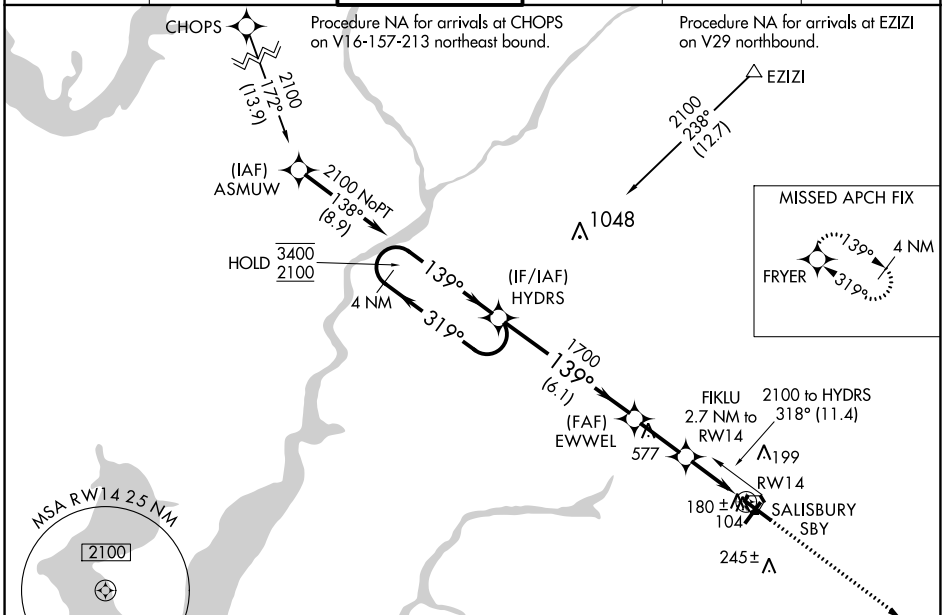
WAAS CH 56320 W14A	APP CRS 139°	Rwy Idg TDZE Apt Elev	6400 49 53
--	------------------------	-----------------------------	---------------------------------------

RNAV (GPS) RWY 14

SALISBURY-OCEAN CITY WICOMICO RGNL (SBY)

RNP APCH.					MISSED APPROACH: Climb to 2000 direct FRYER and hold.	
<p>T Rwy 14 helicopter visibility reduction below 3/4 SM NA. A For uncompensated Baro-VNAV systems, LNAV/VNAV NA below -16° C or above 54° C.</p>						

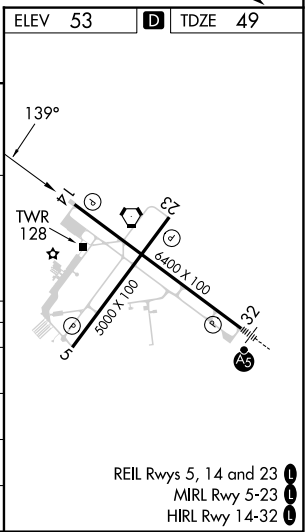
ASOS 118.325	PATUXENT APP CON ★ 127.95 314.0	SALISBURY TOWER ★ 119.425 (CTAF) 0	GND CON 123.775	CLNL DEL ★ 123.775	UNICOM 122.95
------------------------	---	---	---------------------------	------------------------------	-------------------------



NE-3, 07 SEP 2023 to 05 OCT 2023

NE-3, 07 SEP 2023 to 05 OCT 2023

4 NM Holding Pattern		HYDRS		EWWEL		FIKLU 2.7 NM to RW14		2000		FRYER		
3400 ← 319°		2100 → 139°		1700 ↘ 139°		*1.1 NM to RW14		↑		✧		
GP 3.00°		TCH 45		*940		RW14		*LNAV only				
		6.1 NM		2.3 NM		1.6 NM		1.1 NM				
CATEGORY	A	B	C	D								
LPV DA	363-1		314 (400-1)									
LNAV/VNAV DA	453-1½		404 (400-1½)									
LNAV MDA	440-1		391 (400-1)		440-1½		391 (400-1½)		440-1¼		391 (400-1¼)	
CIRCLING	480-1		520-1		560-1½		700-2					
	427 (500-1)		467 (500-1)		507 (600-1½)		647 (700-2)					



REIL Rwy 5, 14 and 23
MIRL Rwy 5-23
HIRL Rwy 14-32