

LOC I-AHN 110.95	APP CRS 274°	Rwy Idg TDZE Apt Elev	6122 813 813
----------------------------	------------------------	-----------------------------	---

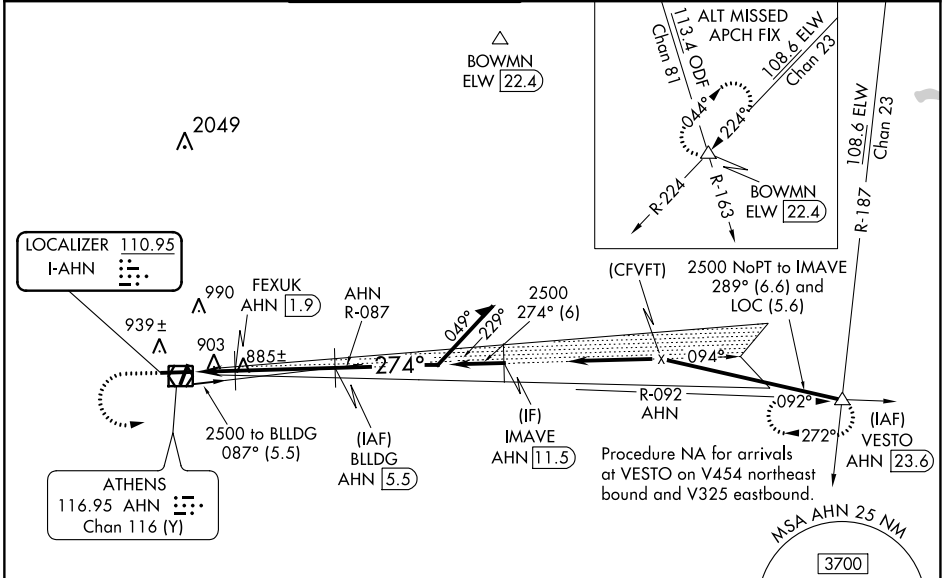
ILS or LOC/DME RWY 27

ATHENS/BEN EPPS (AHN)

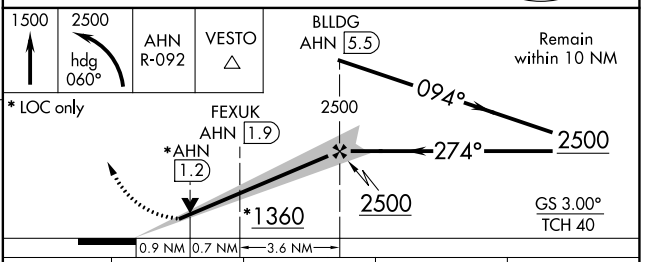
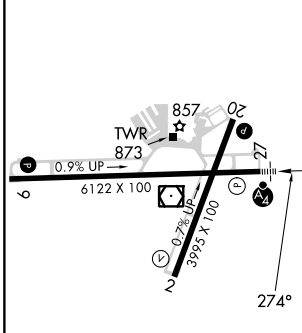
▼ Night landing: Rwy 2, 20 NA. DME from AHN VOR/DME. Simultaneous reception of I-AHN and AHN DME Required. VDP NA with Winder altimeter setting. When local altimeter setting not received, use Winder altimeter setting; increase DA to 1071 feet; increase all MDA 60 feet and S-LOC 27 visibility Cats C and D to 1 SM and Circling Cat D visibility to 2 1/4 SM. For inop MALSF, increase S-LOC 27 all Cats visibility to 1 mile. For inop MALSF when using Winder altimeter setting, increase S-ILS 27 all Cats visibility to 2/8 mile and increase S-LOC 27 Cats A and B visibility to 1 mile, and Cats C and D to 1 1/8 mile. Inop table does not apply to S-ILS 27.

MALSF
MISSED APPROACH:
Climb to 1500 then climbing left turn to 2500 on heading 060° and AHN VOR/DME R-092 to VESTO INT/ AHN 23.6 DME and hold.

ASOS 132.875	ATLANTA APP CON * 132.475 291.1	ATHENS TOWER * 126.3 (CTAF) 338.275	GND CON 121.8	CLNC DEL 121.8	CLNC DEL 132.475 291.1 (when twr closed)	UNICOM 122.95
------------------------	---	---	-------------------------	--------------------------	---	-------------------------



ELEV 813	TDZE 813
----------	----------



	A	B	C	D
S-ILS 27		1013-3/4	200 (200-3/4)	
S-LOC 27		1160-3/4	347 (400-3/4)	
CIRCLING	1260-1 447 (500-1)	1280-1 467 (500-1)	1320-1 1/2 507 (600-1 1/2)	1460-2 647 (700-2)

SE-4, 07 SEP 2023 to 05 OCT 2023

SE-4, 07 SEP 2023 to 05 OCT 2023