

WAAS CH <b>61317</b> <b>W36A</b>	APP CRS <b>004°</b>	Rwy Idg TDZE <b>23</b> Apt Elev <b>24</b>	<b>4498</b>
--	------------------------	---	-------------

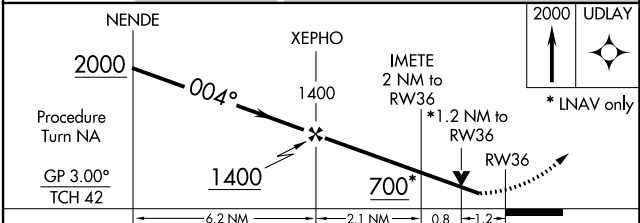
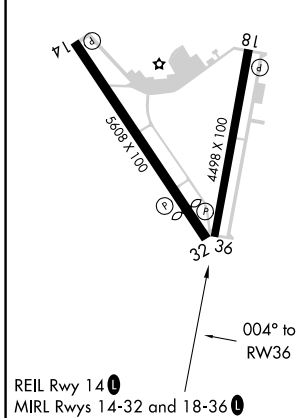
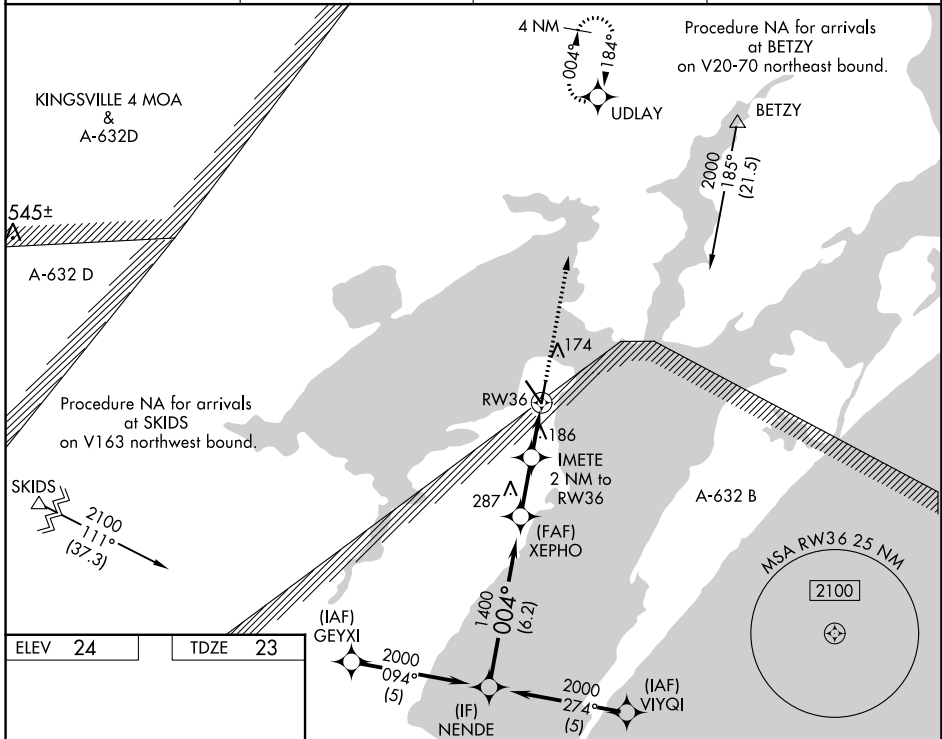
# RNAV (GPS) RWY 36

ARANSAS COUNTY (RKP)

**Baro-VNAV NA** when using Ingleside altimeter setting. For uncompensated Baro-VNAV systems, LNAV/VNAV NA below -15°C (5°F) or above 54°C (130°F). DME/DME RNP-0.3 NA. Visibility reduction by helicopters NA. When local altimeter setting not received, use Ingleside altimeter setting and increase all DA 33 feet and all MDA 40 feet. VDP NA with Ingleside altimeter setting.

**MISSED APPROACH:** Climb to 2000 direct UDLAY and hold.

ASOS <b>119.275</b>	CORPUS APP CON <b>120.9 348.725</b>	CLNC DEL <b>121.7</b>	UNICOM <b>123.05 (CTAF)</b> <b>0</b>
------------------------	--	--------------------------	---



CATEGORY	A	B	C	D
LPV DA	273-1	250 (300-1)		NA
LNAV/VNAV DA	498-1 <sup>3</sup> / <sub>4</sub>	475 (500-1 <sup>3</sup> / <sub>4</sub> )		NA
LNAV MDA	440-1	417 (500-1)	440-1 <sup>1</sup> / <sub>4</sub> 417 (500-1 <sup>1</sup> / <sub>4</sub> )	NA
CIRCLING	500-1	476 (500-1)	500-1 <sup>1</sup> / <sub>2</sub> 476 (500-1 <sup>1</sup> / <sub>2</sub> )	NA

SC-3, 07 SEP 2023 to 05 OCT 2023

SC-3, 07 SEP 2023 to 05 OCT 2023