

WAAS CH <b>56616</b> <b>W18A</b>	APP CRS <b>185°</b>	Rwy Idg <b>12503</b> TDZE <b>79</b> Apt Elev <b>80</b>
--	------------------------	--

# RNAV (GPS) RWY 18L

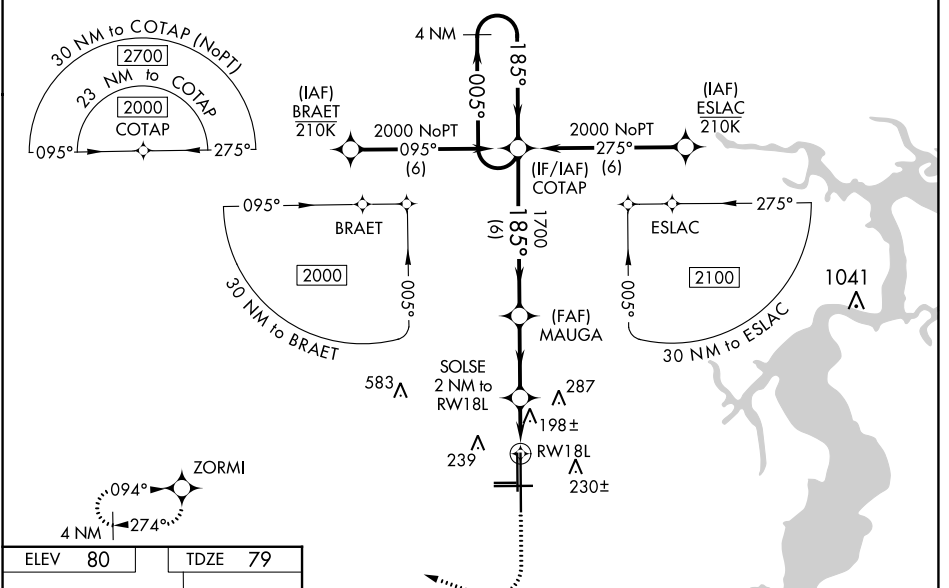
CECIL (VQQ)

▼ Baro-VNAV NA when using Jacksonville Intl altimeter setting. For uncompensated Baro-VNAV systems, LNAV/VNAV NA below -1.5°C (5°F) or above 54°C (130°F). DME/DME RNP-0.3 NA.

▲ When local altimeter setting not received, use Jacksonville Intl altimeter setting and increase all DA 52 feet and all MDA 60 feet. For inop MALSR, increase LNAV Cats C/D visibility to 1½ mile. For inop MALSR, when using Jacksonville Intl altimeter setting, increase LNAV/VNAV all Cats visibility to 1½ mile and LNAV Cats C/D visibility to 1½ mile. Inop table does not apply to LPV and LNAV/VNAV all Cats and LNAV Cat A/B visibilities. When using Jacksonville Intl altimeter setting, inop table does not apply to LPV all Cats and LNAV Cat A/B visibilities. VDP NA when using Jacksonville Intl altimeter setting.

MISSED APPROACH: Climb to 1000 then dimbing right turn to 2000 direct ZORMI and hold.

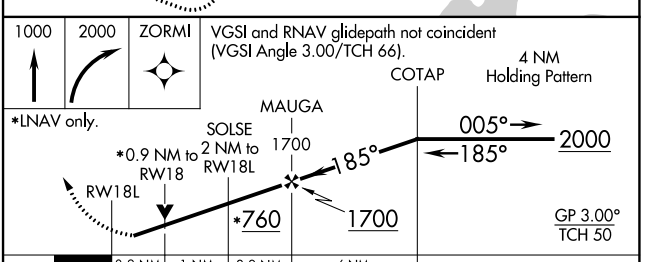
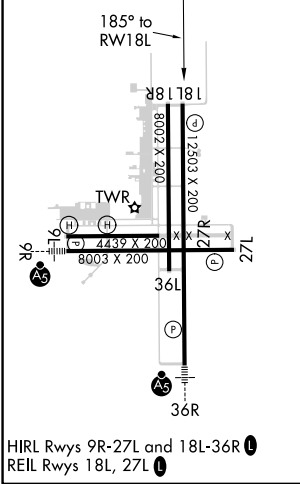
ATIS <b>125.275</b>	JACKSONVILLE APP CON <b>127.775 377.075</b>	CECIL TOWER* <b>126.1 (CTAF) 235.625</b>	GND CON <b>121.625 226.675</b>	CLNC DEL <b>123.975 254.25</b>	GCO <b>135.075</b>
------------------------	--	---	-----------------------------------	-----------------------------------	-----------------------



SE-3, 07 SEP 2023 to 05 OCT 2023

SE-3, 07 SEP 2023 to 05 OCT 2023

ELEV <b>80</b>	TDZE <b>79</b>
----------------	----------------



CATEGORY	A	B	C	D
LPV DA		329-1	250 (300-1)	
LNAV/VNAV DA		368-1	289 (300-1)	
LNAV MDA		460-1	381 (400-1)	
CIRCLING	540-1	560-1	600-1½	640-2
	460 (500-1)	480 (500-1)	520 (600-1½)	560 (600-2)