


# RNAV (GPS) RWY 36R

CECIL (VQQ)

WAAS CH <b>82036</b> <b>W36A</b>	APP CRS <b>005°</b>	Rwy Idg <b>12503</b> TDZE <b>72</b> Apt Elev <b>80</b>
--	------------------------	--

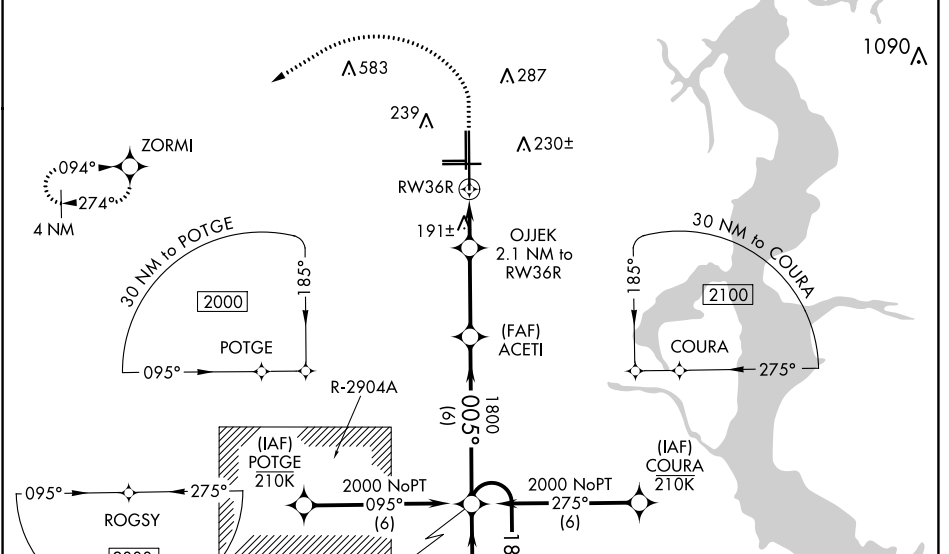
**⚠** Baro-VNAV and VDP NA when using Jacksonville Intl altimeter setting.  
**⚠** For uncompensated Baro-VNAV systems, LNAV/VNAV NA below -15°C (5°F) or above 54°C (130°F). DME/DME RNP-0.3 NA. When local altimeter setting not received, use Jacksonville Intl altimeter setting and increase all DA 52 feet and all MDA 60 feet. Increase LNAV/VNAV all Cats visibility to 1 mile and LNAV Cats C, D visibility to ¾ mile.

**MALSR**

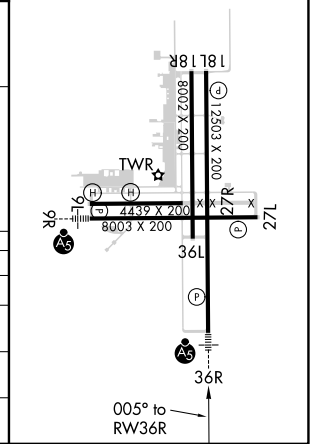
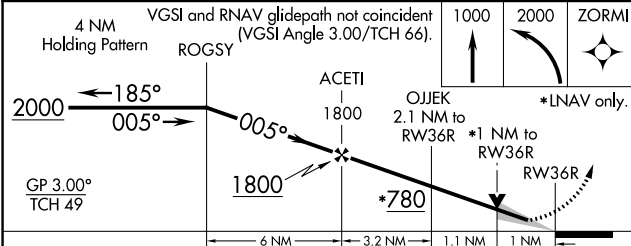


**MISSED APPROACH:**  
Climb to 1000 then climbing left turn to 2000 direct ZORMI and hold.

<b>ATIS</b> <b>125.275</b>	<b>JACKSONVILLE APP CON</b> <b>127.775 377.075</b>	<b>CECIL TOWER*</b> <b>126.1 (CTAF) 0 235.625</b>	<b>GND CON</b> <b>121.625 226.675</b>	<b>CLNC DEL</b> <b>123.975 254.25</b>	<b>GCO</b> <b>135.075</b>
-------------------------------	---	--	--	--	------------------------------



ELEV <b>80</b>	TDZE <b>72</b>
HIRL Rwy 9R-27L and 18L-36R <b>Ⓢ</b>	
REIL Rwy 18L, 27L <b>Ⓢ</b>	



CATEGORY	A	B	C	D
LPV DA		272-½	200 (200-½)	
LNAV/VNAV DA		467-¾	395 (400-¾)	
LNAV MDA	460-½	388 (400-½)	460-⅝	388 (400-⅝)
<b>C</b> CIRCLING	540-1 460 (500-1)	560-1 480 (500-1)	600-1½ 520 (600-1½)	640-2 560 (600-2)

SE-3, 07 SEP 2023 to 05 OCT 2023

SE-3, 07 SEP 2023 to 05 OCT 2023