

TACAN NIP Chan 19 (108.2)	APP CRS 269°	Rwy Idg TDZE Apt Elev	8003 72 80
---	------------------------	-----------------------------	---------------------------------------

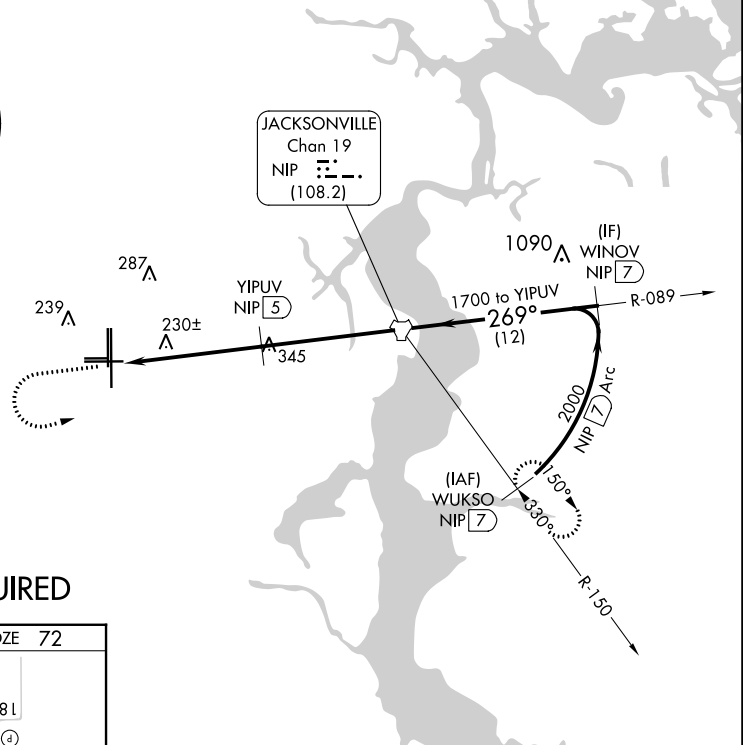
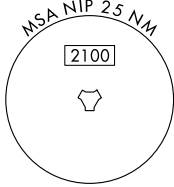
TACAN RWY 27L

CECIL (VQQ)

V VDP NA with Jacksonville Intl altimeter setting. Helicopter visibility reduction below $\frac{3}{4}$ SM NA. When local altimeter setting not received, use Jacksonville Intl altimeter setting and increase all MDA 60 feet, increase S-27L Cats C, D, E visibility $\frac{1}{8}$ mile.

MISSED APPROACH: Climb to 700 then climbing left turn to 2100 direct NIP TACAN and continue on NIP TACAN R-150 to WUKSO/7 DME and hold.

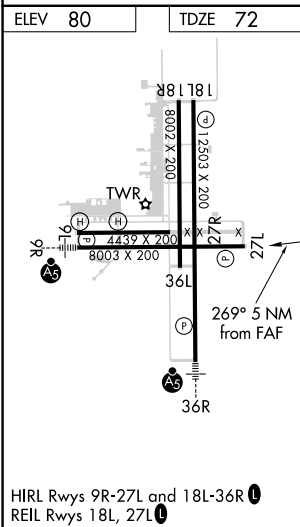
ATIS 125.275	JACKSONVILLE APP CON 127.775 377.075	CECIL TOWER * 126.1 (CTAF) 235.625	GND CON 121.625 226.675	CLNC DEL 123.975 254.25	GCO 135.075
------------------------	--	--	-----------------------------------	-----------------------------------	-----------------------



SE-3, 07 SEP 2023 to 05 OCT 2023

SE-3, 07 SEP 2023 to 05 OCT 2023

RADAR REQUIRED



700	2100	NIP	NIP R-150	WUKSO NIP 7	VGSI and descent angles not coincident (VGSI Angle 3.00/TCH 67).
↑	↙	⬡	⬢	⬢	
		NIP 10	NIP 8.8	YIPUV NIP 5	NIP TACAN
					WINOV NIP 7
					2000
					269°
					1700
					2.97°
					TCH 55
					1.2 3.8 NM 5 NM 7 NM
CATEGORY	A	B	C	D	E
S-27L	540-1	468 (500-1)	540-1 $\frac{3}{8}$	468 (500-1 $\frac{3}{8}$)	
CIRCLING	540-1 460 (500-1)	560-1 480 (500-1)	600-1 $\frac{1}{2}$ 520 (600-1 $\frac{1}{2}$)	640-2 560 (600-2)	900-3 820 (900-3)