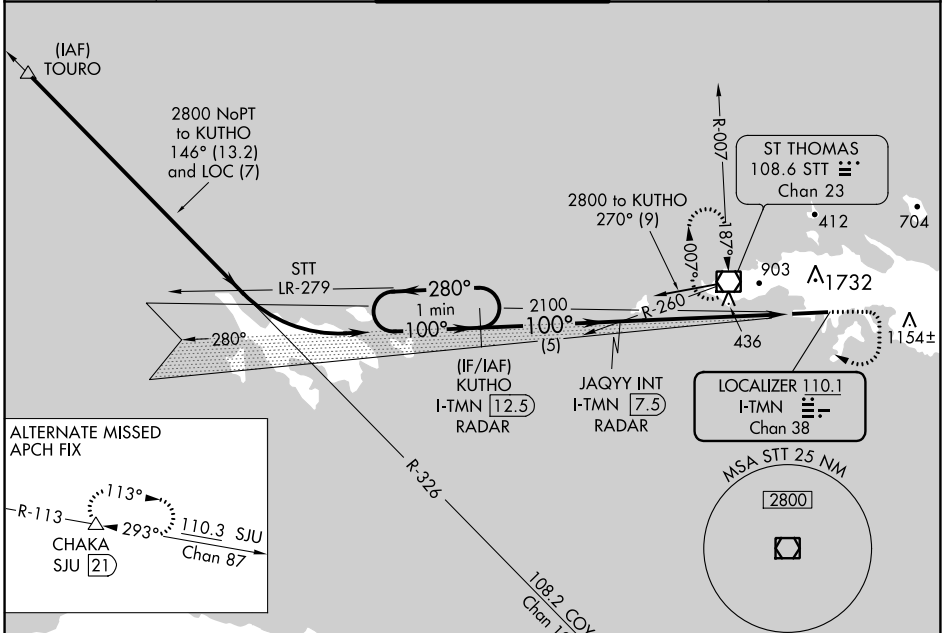


LOC/DME I-TMN 110.1 Chan 38	APP CRS 100°	Rwy Idg 6892 TDZE 24 Apt Elev 24
---	------------------------	---

ILS or LOC RWY 10

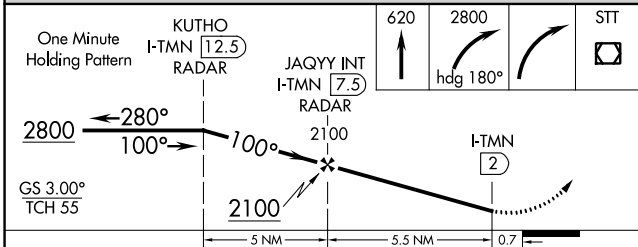
CYRIL E KING (STT)(TIST)

<p>⚠ Circling NA at night. Procedure NA when control tower closed. Circling NA north of Rwy 10-28.</p>		<p>MISSED APPROACH: Climb to 620 then climbing right turn to 2800 on heading 180° then right turn direct St Thomas VOR/DME and hold.</p>		
ATIS 124.0	SAN JUAN CENTER 128.65 279.6	ST. THOMAS TOWER ★ 118.8 (CTAF) 0 257.6 118.1 (NORTH OF ISLAND)	GND CON 121.9	UNICOM 122.95



ALTERNATE MISSED APCH FIX

CAUTION: Pilots may encounter false illusory indications during night approaches to Rwy 10 when using outside visual cues for vertical guidance.



ELEV 24	D TDZE 24
MIRL Rwy 10-28	
FAF to MAP 5.5 NM	
CATEGORY	A B C D
S-ILS 10	415-1 1/8 391 (400-1 1/8)
S-LOC 10	620-1 596 (600-1) 620-1 3/4 596 (600-1 3/4)
CIRCLING	660-1 700-1 860-2 1/2 1480-3 636 (700-1) 676 (700-1) 836 (900-2 1/2) 1456 (1500-3)
Knots 60 90 120 150 180	
Min:Sec 5:30 3:40 2:45 2:12 1:50	

SE-3, 07 SEP 2023 to 05 OCT 2023

SE-3, 07 SEP 2023 to 05 OCT 2023