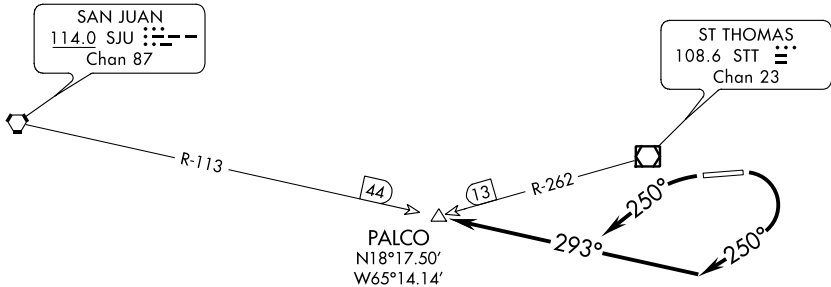


# PALCO SEVEN DEPARTURE

ATIS 124.0  
GND CON  
121.9  
ST THOMAS TOWER ★  
118.8 (CTAF) 257.6  
118.1 (NORTH OF ISLAND)  
SAN JUAN DEP CON  
128.65 279.6

**TOP ALTITUDE:  
3000**



**TAKE-OFF MINIMUMS:**

Rwy 10: 400-1 with minimum climb of 462' per NM to 1400 or 2100-2½ for climb in visual conditions.  
Rwy 28: 800-3 or Standard with a minimum climb of 366' per NM to 1000.

NOTE: Chart not to scale.

NOTE: DME or RADAR Required.



## DEPARTURE ROUTE DESCRIPTION

**TAKEOFF RWY 10:** Turn right heading 250° (unless assigned otherwise) to intercept the SJU R-113 to PALCO INT, or climb in visual conditions to cross Cyril E. King airport at or above 2100, then on SJU R-113 to PALCO INT. Thence . . . .

**TAKEOFF RWY 28:** Turn left heading 250° (unless assigned otherwise) to intercept the SJU R-113 to PALCO INT. Thence . . . .

. . . . Maintain 3000 unless assigned lower altitude.  
Expect clearance to flight level 280 or requested altitude if lower ten minutes after departure. Contact San Juan Departure.