

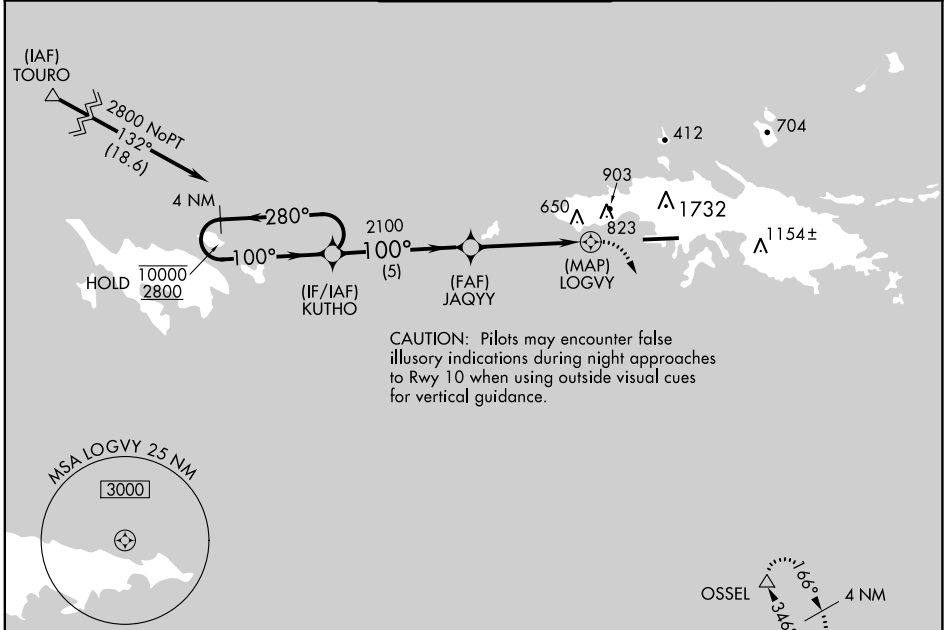
APP CRS <b>100°</b>	Rwy ldg <b>6892</b> TDZE <b>24</b> Apt Elev <b>24</b>
------------------------	-------------------------------------------------------------

# RNAV (GPS) RWY 10

CYRIL E KING (STT)(TIST)

RNP APCH - GPS.		MISSED APPROACH: Climbing right turn to 2800 direct OSSEL and hold.
		* Missed approach requires minimum climb of 411 feet per NM to 1900 for Category C/D aircraft.

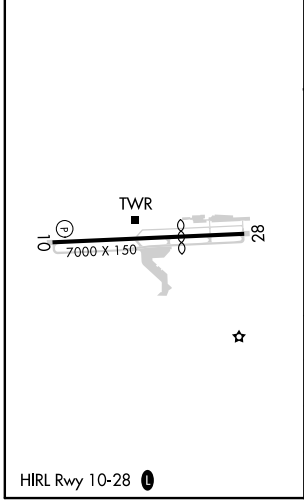
ATIS <b>124.0</b>	SAN JUAN CENTER <b>128.65 279.6</b>	ST. THOMAS TOWER ★ <b>118.8</b> (CTAF) <b>0 257.6</b> <b>118.1</b> (NORTH OF ISLAND)	GND CON <b>121.9</b>	UNICOM <b>122.95</b>
----------------------	----------------------------------------	--------------------------------------------------------------------------------------------	-------------------------	-------------------------



SE-3, 07 SEP 2023 to 05 OCT 2023

SE-3, 07 SEP 2023 to 05 OCT 2023

ELEV <b>24</b>	<b>D</b>	TDZE <b>24</b>
----------------	----------	----------------



4 NM Holding Pattern VGSIs and descent angles not coincident (VGSIs Angle 3.00/TCH 71). OSSEL	KUTHO 10000 ← 280° 2800 → 100°			
	JAQYY 2100 3.05° TCH 56 1.4 NM to LOGVY LOGVY 1.4 1.9			
CATEGORY	A	B	C	D
LNAV MDA*	1180-2½	1156 (1200-2½)	1180-3	1156 (1200-3)
LNAV MDA	1560-2½	1536 (1600-2½)	1560-3	1536 (1600-3)
CIRCLING	1560-2½	1536 (1600-2½)	1560-3	1536 (1600-3)