

VOR FKL 109.6	APP CRS 187°	Rwy ldg TDZE 1540 Apt Elev 1540
-------------------------	------------------------	---

VOR RWY 21

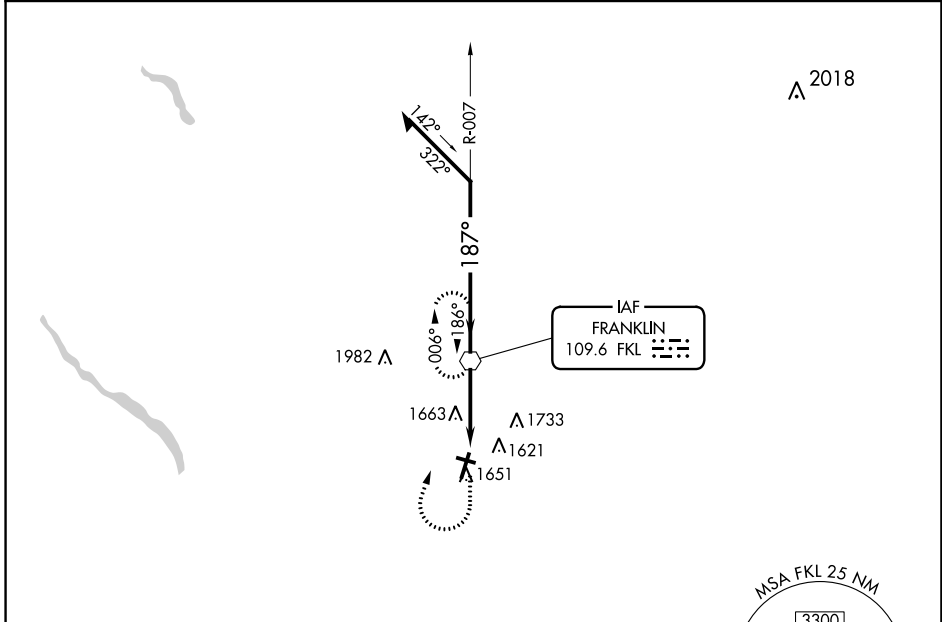
VENANGO RGNL (F'KL)

⚠ Inop table does not apply. When local altimeter setting not received, use Port Meadville altimeter setting and increase all MDA 80 feet and S-21 Cats C/D visibility $\frac{3}{8}$ mile. Circling Rwy 12 NA at night. Rwy 12 helicopter visibility reduction below 1 SM NA.

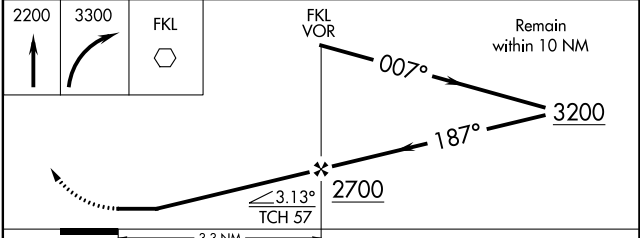
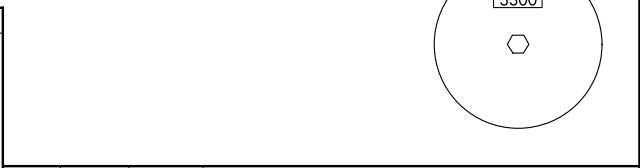
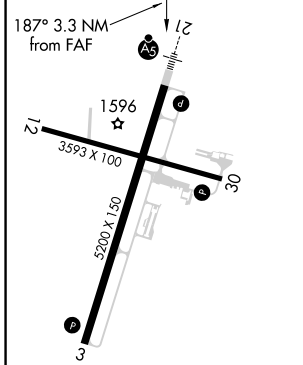
MALSR
AS

MISSED APPROACH: Climb to 2200, then climbing right turn to 3300 direct FKL VOR and hold.

AWOS-3PT 118.175	YOUNGSTOWN APP CON ★ 126.25 322.3	CLNC DEL 126.25	UNICOM 122.7 (CTAF) 📞
----------------------------	---	---------------------------	--



ELEV 1540	D	TDZE 1540
-----------	----------	-----------



FAF to MAP 3.3 NM					
Knots	60	90	120	150	180
Min:Sec	3:18	2:12	1:39	1:19	1:06
CATEGORY	A	B	C	D	
S-21	1920-1 380 (400-1)				
CIRCLING	1960-1 420 (500-1)	2000-1 460 (500-1)	2040-1½ 500 (500-1½)	2100-2 560 (600-2)	

NE-4, 07 SEP 2023 to 05 OCT 2023

NE-4, 07 SEP 2023 to 05 OCT 2023