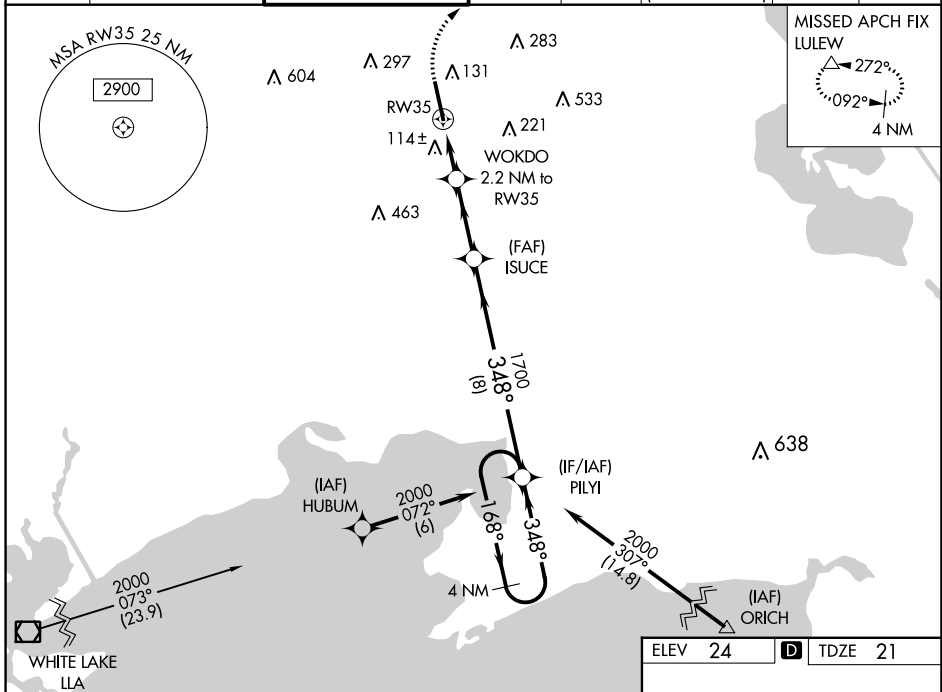


WAAS CH 40301 W35A	APP CRS 348°	Rwy Idg 8002 TDZE 21 Apt Elev 24
--	------------------------	---

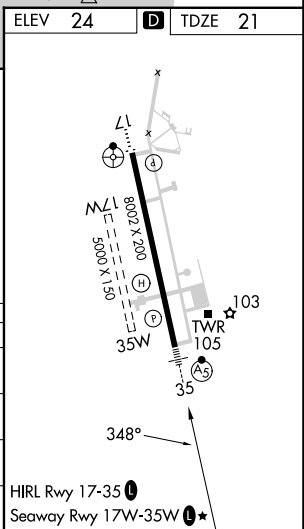
RNAV (GPS) RWY 35

ACADIANA RGNL (A.R.A)

RNP APCH.				MALSR	MISSED APPROACH: Climb to 440 then climbing right turn to 2000 direct LULEW and hold.		
▼ For uncompensated Baro-VNAV systems, LNAV/VNAV NA below -3°C or above 54°C. For inop ALS, increase LNAV/VNAV all Cats visibility to ½ SM and LNAV Cats C/D visibility to 1 SM. Circling NA to Rwy 17W and 35W.							
ASOS 133.325	LAFAYETTE APP CON* 121.1 268.7	ACADIANA TOWER* 125.0 (CTAF) 239.3	GND CON 121.7	CLNC DEL 121.7	CLNC DEL 118.05 (when twr closed)	UNICOM 122.95	0 * 122.7



440	2000	LULEW	VGSI and RNAV glidepath not coincident (VGSI Angle 3.00/TCH 52).	4 NM Holding Pattern
LNAV only. ISUCE 1700 WOKDO 2.2 NM to RW35 RW35 760 GP 3.00° TCH 52 168° → 2000 ← 348°				
CATEGORY	A	B	C	D
LPV DA		221-½	200 (200-½)	
LNAV/DA		303-½	282 (300-½)	
LNAV MDA	380-½	359 (400-½)	380-¾	359 (400-¾)
CIRCLING	440-1 416 (500-1)	480-1 456 (500-1)	600-1½ 576 (600-½)	680-2 656 (700-2)



SC-4, 07 SEP 2023 to 05 OCT 2023

SC-4, 07 SEP 2023 to 05 OCT 2023