

LEMOORE, CALIFORNIA

HI-TACAN Z RWY 32L

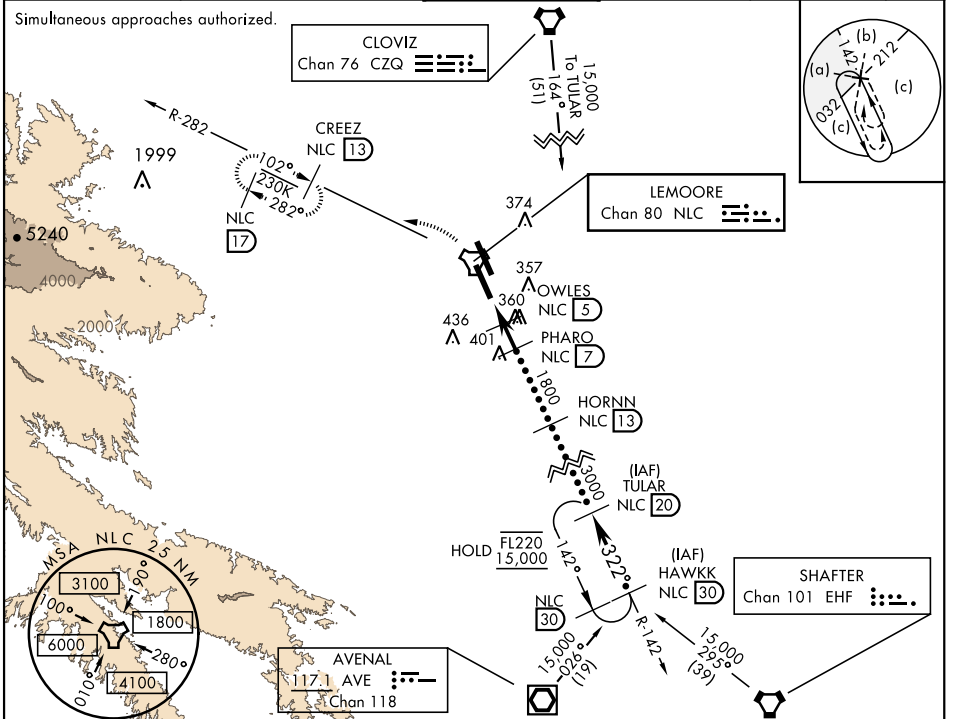
TACAN NLC Chan 80	APCH CRS 322°	Rwy ldg TDZE Arprt Elev 13,501 227 228	AL-5067 [USN]	LEMOORE NAS (REEVES FIELD) (KNLC)
-----------------------------	-------------------------	--	---------------	-----------------------------------

ALSIF-2 MISSED APPROACH: Climb to 3000 via R-142 to NLC TACAN, then via R-282 to CREEZ and hold.

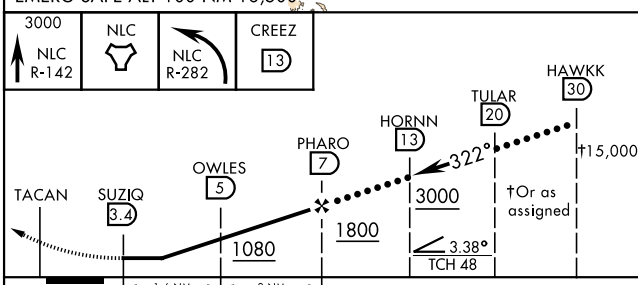
*When ALS inop, increase CAT CDE vis to 1 mile.

ATIS★ 121.575 327.15	APP CON 124.1 269.025 (N) 118.15 269.025 (S)	TOWER★ 128.3 340.2	GND CON 121.65 305.2	CLNC DEL 124.1 371.9	ASR/ PAR
--------------------------------	--	------------------------------	--------------------------------	--------------------------------	-------------

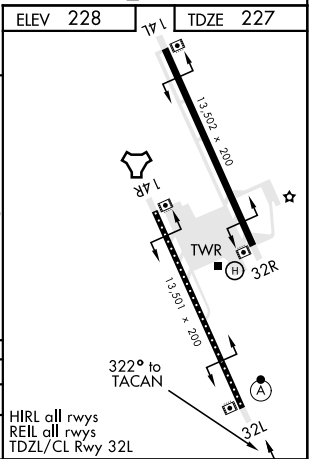
Simultaneous approaches authorized.



ELEV 228	TDZE 227
----------	----------



CATEGORY	C	D	E
S-32L *	580-5/8	353 (400-5/8)	
CIRCLING	700-1 1/2 472 (500-1 1/2)	780-2 552 (600-2)	



LEMOORE, CALIFORNIA 36°20'N-119°57'W LEMOORE NAS (REEVES FIELD) (KNLC)

Amtd 7 19MAY22

HI-TACAN Z RWY 32L

SW-2, 07 SEP 2023 to 05 OCT 2023

SW-2, 07 SEP 2023 to 05 OCT 2023