

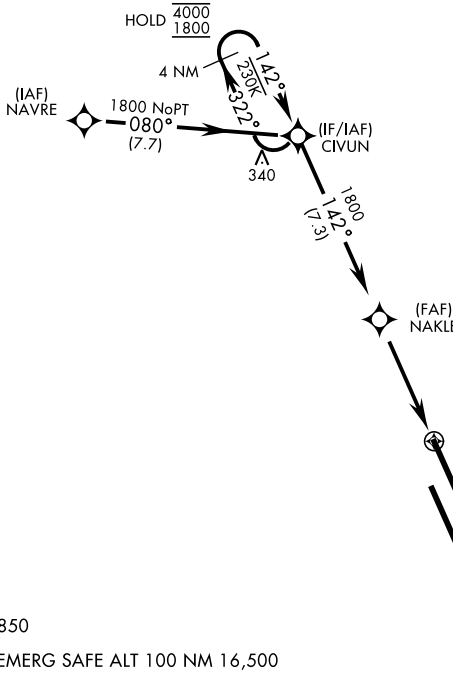
RNAV (GPS) RWY 14L

WAAS Chan 70209 W14A	APCH CRS 142°	Rwy Idg 13,502 TDZE 219 Arprt Elev 228
------------------------------------------	-------------------------	-------------------------------------------------------------------

AL-5067 [USN]

LEMOORE NAS (REEVES FIELD) (KNLC)

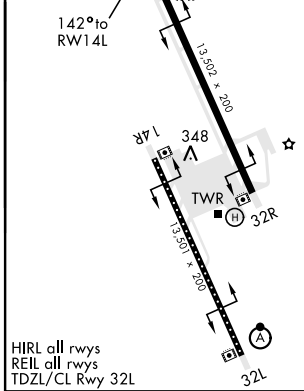
<p>▽ DME/DME RNP-0.3 NA</p>		<p>MISSED APPROACH: Climb to 1200, then climb left turn to 2000 direct STRAT and hold.</p>			
<p>ATIS ★ 121.575 327.15</p>	<p>APP CON 124.1 269.025 (N) 118.15 269.025 (S)</p>	<p>TOWER ★ 128.3 340.2</p>	<p>GND CON 121.65 305.2</p>	<p>CLNC DEL 124.1 371.9</p>	<p>ASR/PAR</p>



Simultaneous approaches authorized.
 LNAV procedure NA during Simultaneous operations.
 Use of FD or AP providing RNAV track guidance required during simultaneous operations.

For uncompensated Baro-VNAV systems, LNAV/VNAV procedure NA below -15°C (5°F) and above 54°C (129°F).

ELEV 228	TDZE 219
----------	----------



<p>4 NM Holding Pattern</p> <p>CIVUN</p> <p>4000 ← 322°</p> <p>1800 → 142°</p> <p>GP 3.00°</p> <p>TCH 54</p>	<p>NAKLE</p> <p>1800</p>	<p>1200</p> <p>2000</p> <p>STRAT</p>	<p>0.8 NM to RWY 14L</p> <p>RWY 14L</p>	
				<p>4.8 NM</p>
<p>CATEGORY</p>	A	B	C	D
<p>LPV DA</p>	419-3/4	200	(200-3/4)	
<p>LNAV/VNAV DA</p>	469-3/4	250	(300-3/4)	
<p>LNAV MDA</p>	520-1	301	(300-1)	
<p>C CIRCLING</p>	680-1	452 (500-1)	700-1 1/2 472 (500-1 1/2)	780-2 552 (600-2)

RNAV (GPS) RWY 14L

SW-2, 07 SEP 2023 to 05 OCT 2023

SW-2, 07 SEP 2023 to 05 OCT 2023