

RNAV (GPS) RWY 14R

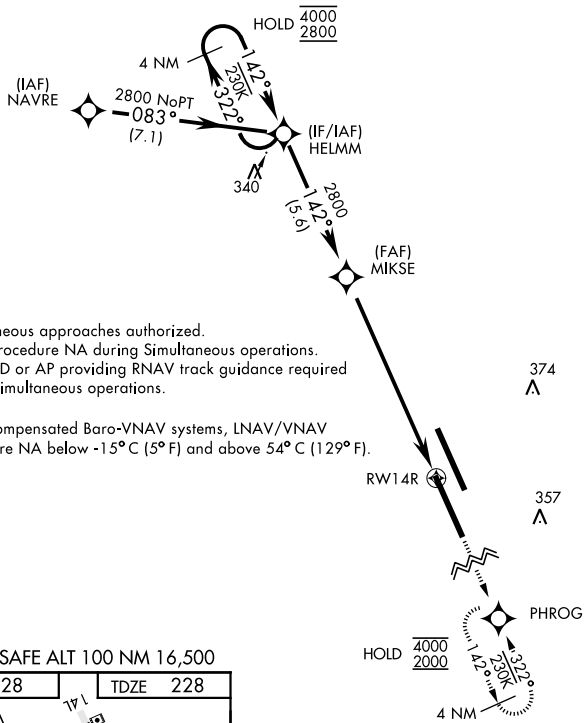
WAAS Chan 80286 W14B	APCH CRS 142°	Rwy Idg 13,501 TDZE 228 Arpt Elev 228
--	-------------------------	--

AL-5067 [USN]

LEMOORE NAS (REEVES FIELD) (KNLC)

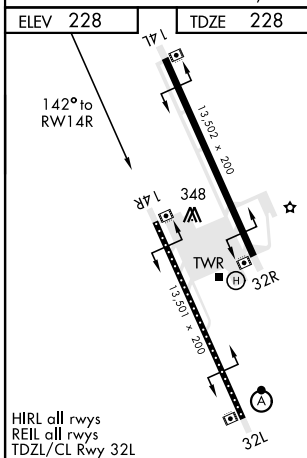
▽ DME/DME RNP-0.3 NA	MISSED APPROACH: Climb to 1200, then climbing right turn to 2000 direct PHROG and hold.
-----------------------------	---

ATIS ★ 121.575 327.15	APP CON 124.1 269.025 (N) 118.15 269.025 (S)	TOWER ★ 128.3 360.2	GND CON 121.65 305.2	CLNC DEL 124.1 371.9	ASR/PAR
---------------------------------	--	-------------------------------	--------------------------------	--------------------------------	---------



Simultaneous approaches authorized.
LNAV procedure NA during Simultaneous operations.
Use of FD or AP providing RNAV track guidance required during simultaneous operations.
For uncompensated Baro-VNAV systems, LNAV/VNAV procedure NA below -15° C (5° F) and above 54° C (129° F).

EMERG SAFE ALT 100 NM 16,500



HIRL all rwys
REIL all rwys
TDZL/CL Rwy 32L
Amdt 7 19MAY22

4 NM Holding Pattern	HELMM	MIKSE	1200	2000	PHROG
	4000 2800	322° 142°	142°	1.3 NM to RWY14R	
GP 3.00° TCH 51		2800		7.9 NM	
CATEGORY	A	B	C	D	
LPV DA		428-3/4	200 (200-3/4)		
LNAV/VNAV DA		483-3/4	255 (300-3/4)		
LNAV MDA	680-1	452 (500-1)	680-1 3/8	452 (500-1 3/8)	
C CIRCLING	680-1	452 (500-1)	700-1 1/2	780-2	552 (600-2)

RNAV (GPS) RWY 14R

SW-2, 07 SEP 2023 to 05 OCT 2023

SW-2, 07 SEP 2023 to 05 OCT 2023