

LEMOORE, CALIFORNIA

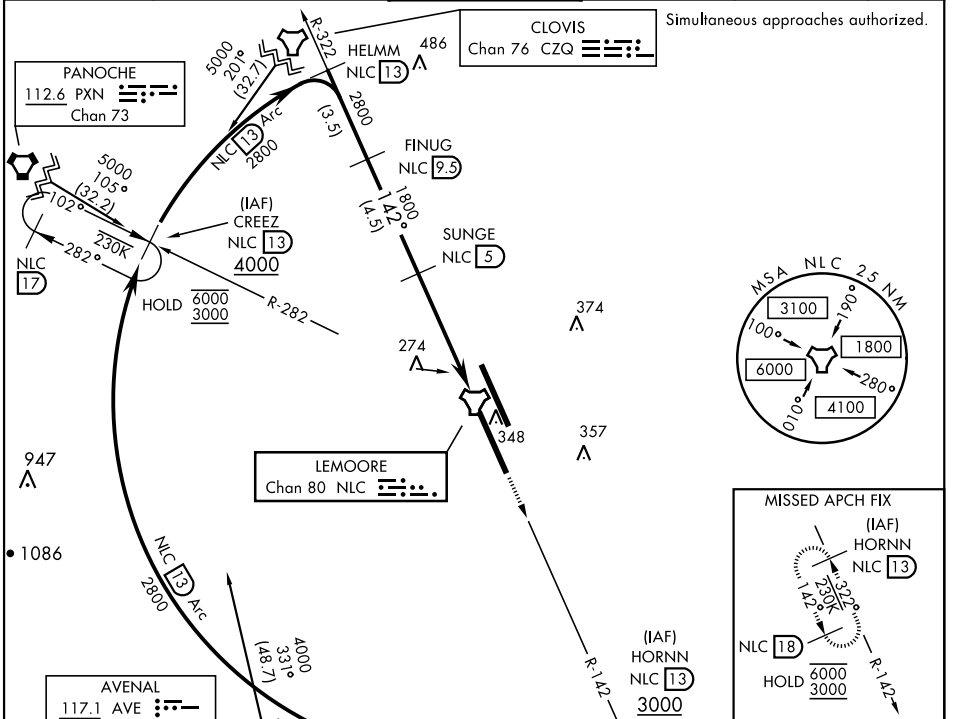
TACAN Y RWY 14R

TACAN Chan 80	NLC 142°	APCH CRS 142°	Rwy Idg 13,501 TDZE 228 Arprt Elev 228
-------------------------	--------------------	-------------------------	---

AL-5067 [USN]

LEMOORE NAS (REEVES FIELD) (KNLC)

MISSED APPROACH: Climb to 3000 via R-142 to HORNN and hold.					
ATIS★ 121.575 327.15	APP CON 124.1 269.025 (N) 118.15 269.025 (S)	TOWER★ 128.3 360.2	GND CON 121.65 305.2	CLNC DEL 124.1 371.9	ASR/PAR



EMERG SAFE ALT 100 NM 16,500				ELEV 228 TDZE 228	
CATEGORY	A	B	C	D	
S-14R	560-1		332	(400-1)	
CIRCLING	680-1	452 (500-1)	700-1½ 472 (500-1½)	780-2 552 (600-2)	
LEMOORE, CALIFORNIA				LEMOORE NAS (REEVES FIELD) (KNLC)	
Amdt 6 19MAY22				36°20'N-119°57'W	

TACAN Y RWY 14R

SW-2, 07 SEP 2023 to 05 OCT 2023

SW-2, 07 SEP 2023 to 05 OCT 2023

HIRL all rwy's
 REIL all rwy's
 TDZL/CL Rwy 32L