

LEMOORE, CALIFORNIA

22139

TACAN Y RWY 32L

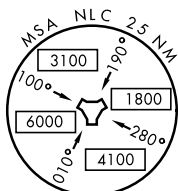
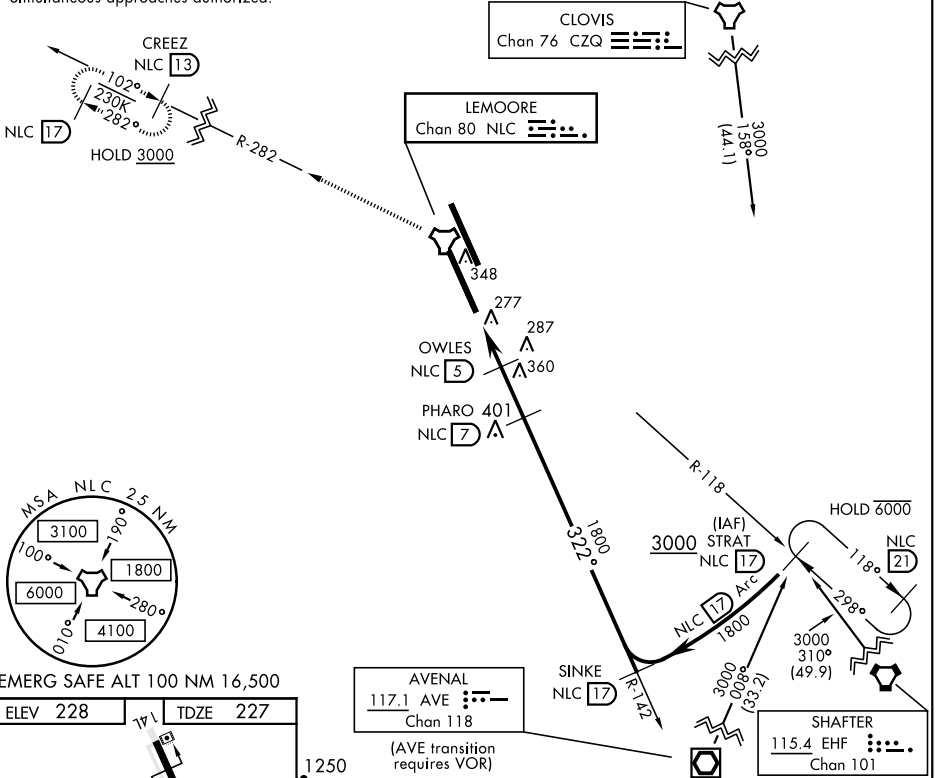
TACAN Chan 80	APCH CRS 322°	Rwy ldg TDZE Arprt Elev
		13,501 227 228

AL-5067 [USN]

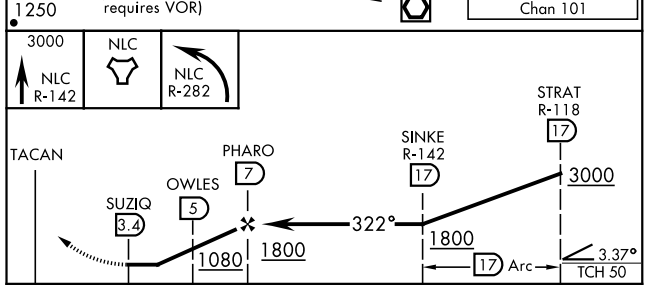
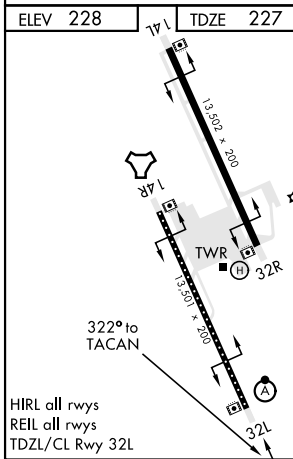
LEMOORE NAS (REEVES FIELD) (KNLC)

<p>▼ *When ALS inop, increase vis to 1 mile.</p>		<p>ALSF-2 A</p>	<p>MISSED APPROACH: Climb to 3000 via R-142 to NLC TACAN, then via R-282 to CREEZ and hold.</p>		
<p>ATIS ★ 121.575 327.15</p>	<p>APP CON 124.1 269.025 (N) 118.15 269.025 (S)</p>	<p>TOWER ★ 128.3 340.2</p>	<p>GND CON 121.65 305.2</p>	<p>CLNC DEL 124.1 371.9</p>	<p>ASR/PAR</p>

Simultaneous approaches authorized.



EMERG SAFE ALT 100 NM 16,500



CATEGORY	A	B	C	D
S-32L *	580-1/2	353	(400-1/2)	
CIRCLING	680-1 452 (500-1)	700-1 1/2 472 (500-1 1/2)	780-2 552 (600-2)	

LEMOORE, CALIFORNIA
Amdt 8 19MAY22

36°20'N-119°57'W

LEMOORE NAS (REEVES FIELD) (KNLC)

TACAN Y RWY 32L

SW-2, 07 SEP 2023 to 05 OCT 2023

SW-2, 07 SEP 2023 to 05 OCT 2023