

LOC I-SKC <b>109.5</b>	APP CRS <b>103°</b>	Rwy ldg <b>5849</b>
		TDZE <b>901</b>
		Apt Elev <b>911</b>

# ILS or LOC RWY 10

WAUKESHA COUNTY (U/E/S)

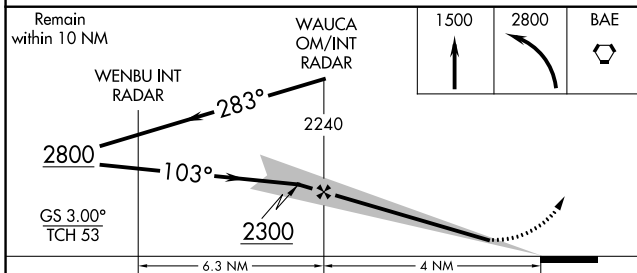
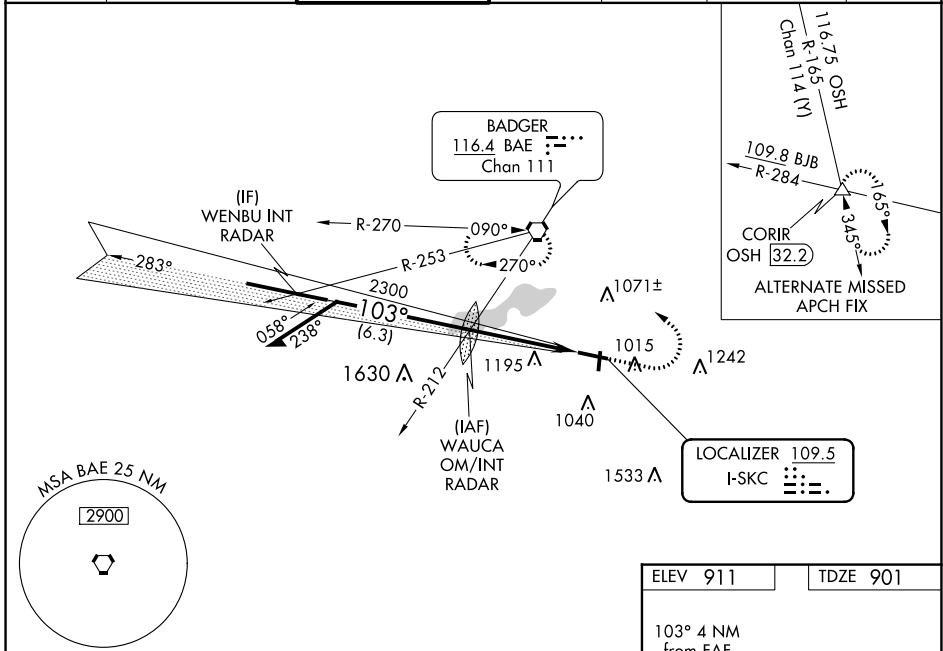
RADAR required for procedure entry.

▼ For inoperative MALS, increase S-LOC 10 Cat C/D visibility to 1 1/2 mile. For inop MALS when using Lawrence J Timmerman altimeter setting, increase S-LOC 10 Cat C/D visibility to 1 1/2 mile. When local altimeter setting not received, use Lawrence J Timmerman altimeter setting: increase DA to 1147 feet; increase all MDAs 60 feet and increase S-LOC 10 Cat C and D and Circling Cat C and D visibility 1/4 SM.

▲ MISSED APPROACH: Climb to 1500 then climbing left turn to 2800 direct BAE VORTAC and hold.

MALS

ATIS <b>118.875</b>	MILWAUKEE APP CON <b>125.35 307.0</b>	WAUKESHA TOWER * <b>123.7 (CTAF)</b>	GND CON <b>121.6</b>	CLNC DEL <b>121.6</b>	CLNC DEL <b>128.7</b> (When twr closed)	UNICOM <b>122.95</b>
------------------------	--	---	-------------------------	--------------------------	---	-------------------------



ELEV 911	TDZE 901
HIRL Rwy 10-28 MIRL Rwy 18-36 REIL Rwy 18, 28 and 36	
FAF to MAP 4 NM	
Knots	60 90 120 150 180
Min:Seq	4:00 2:40 2:00 1:36 1:20

CATEGORY	A	B	C	D
S-ILS-10	1101-1/2		200 (200-1/2)	
S-LOC-10	1400-1/2	499 (500-1/2)	1400-1	499 (500-1)
CIRCLING	1460-1 549 (600-1)	1500-1 589 (600-1)	1540-1 3/4 629 (700-1 3/4)	1640-2 1/4 729 (800-2 1/4)

EC-3, 07 SEP 2023 to 05 OCT 2023

EC-3, 07 SEP 2023 to 05 OCT 2023