

WAAS CH 53411 W10A	APP CRS 103°	Rwy Idg TDZE Apt Elev	5849 901 911
--	------------------------	-----------------------------	---

RNAV (GPS) RWY 10

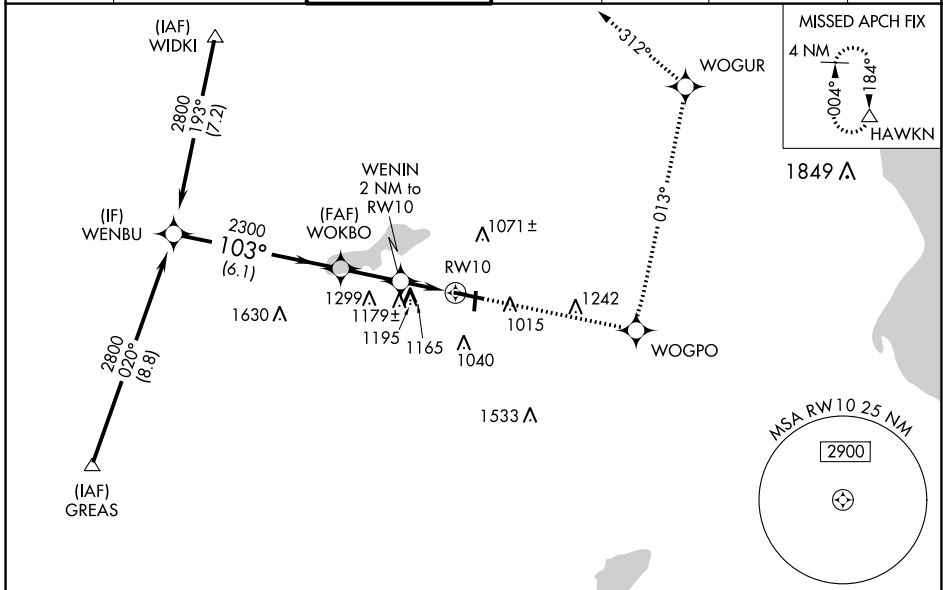
WAUKESHA COUNTY (UES)

Baro-VNAV NA when using Lawrance J Timmerman altimeter setting. For uncompensated Baro-VNAV systems, LNAV/VNAV NA below -16°C (4°F) or above 54°C (130°F). DME/DME RNP-0.3 NA. When local altimeter setting not received, use Lawrance J Timmerman altimeter setting: increase LPV DA to 1147 feet, LNAV/VNAV DA to 1583 feet and all Cats visibility ½ SM; increase all MDAs 60 feet and Circling Cat C and D visibility ½ SM.

MALSR

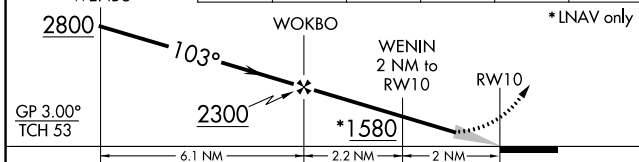
MISSED APPROACH: Climb to 3000 direct WOGPO and left turn on track 013° to WOGUR and track 312° to HAWKN and hold.

ATIS 118.875	MILWAUKEE APP CON 125.35 307.0	WAUKESHA TOWER ★ 123.7 (CTAF)	GND CON 121.6	CLNC DEL 121.6	CLNC DEL 128.7 (When twr closed)	UNICOM 122.95
------------------------	--	---	-------------------------	--------------------------	---	-------------------------



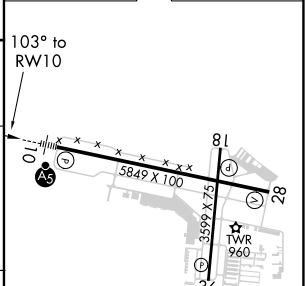
Procedure NA for arrivals at GREAS via V63 southwest bound.

Procedure Turn NA	3000	WOGPO	WOGUR	HAWKN
	↑	✦	tr 013°	✦



CATEGORY	A	B	C	D
LPV DA		1101-½	200 (200-½)	
LNAV/VNAV DA		1537-¾	636 (700-¾)	
LNAV MDA	1440-½	539 (600-½)	1440-1 539 (600-1)	1440-1¼ 539 (600-1¼)
CIRCLING	1460-1 549 (600-1)	1500-1 589 (600-1)	1540-1¾ 629 (700-¾)	1640-2¼ 729 (800-2¼)

ELEV 911	TDZE 901
----------	----------



HIRL Rwy 10-28	●
MIRL Rwy 18-36	●
REIL Rwy 18, 28 and 36	●

EC-3, 07 SEP 2023 to 05 OCT 2023

EC-3, 07 SEP 2023 to 05 OCT 2023