

APP CRS	Rwy Idg	5849
270°	TDZE	906
	Apt Elev	911

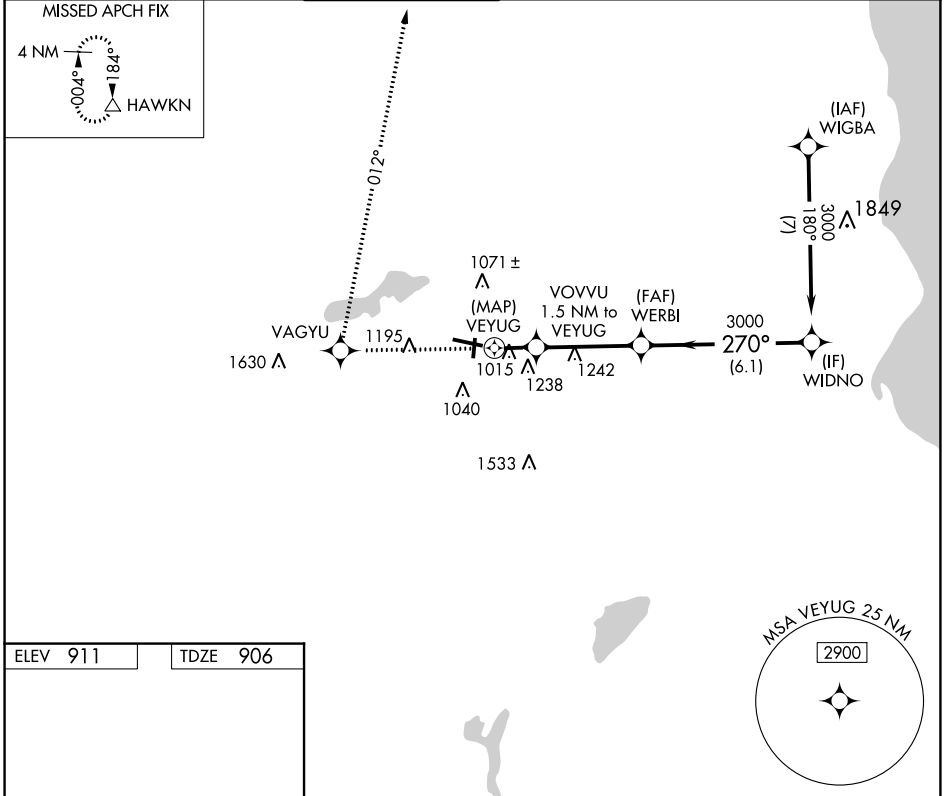
RNAV (GPS) RWY 28

WAUKESHA COUNTY (U/S)

▽ DME/DME RNP-0.3 NA. Visibility reduction by helicopters NA. When local altimeter setting not received, use Lawrence J Timmerman altimeter setting and increase all MDA 60 feet, increase Circling Cat C and D visibility ¼ mile.

△ MISSED APPROACH: Climb to 3000 direct VAGYU and right turn via 012° track to HAWKN and hold.

ATIS 118.875	MILWAUKEE APP CON 125.35 307.0	WAUKESHA TOWER ★ 123.7 (CTAF) 0	GND CON 121.6	CLNC DEL 121.6	CLNC DEL 128.7 (When twr closed)	UNICOM 122.95
------------------------	--	---	-------------------------	--------------------------	---	-------------------------



ELEV 911	TDZE 906
----------	----------

HIRL Rwy 10-28 **1**
MIRL Rwy 18-36 **1**
REIL Rwy 18, 28 and 36 **1**

3000	VAGYU	HAWKN	VGSI and descent angles not coincident (VGSI Angle 3.75/TCH 37).	
↑	✧	tr 012°		
VOVVU 1.5 NM to VEYUG		WERBI	WIDNO	
VEYUG	3000	270°	3000	
1640		3.38° TCH 37	Procedure Turn NA	
1.5 NM		3.8 NM	6.1 NM	
CATEGORY	A	B	C	D
LNAV MDA	1420-1	514 (600-1)	1420-1½ 514 (600-1½)	1420-1¾ 514 (600-1¾)
CIRCLING	1460-1 549 (600-1)	1500-1 589 (600-1)	1540-1¾ 629 (700-1¾)	1640-2¼ 729 (800-2¼)

EC-3, 07 SEP 2023 to 05 OCT 2023

EC-3, 07 SEP 2023 to 05 OCT 2023