

WAAS CH 82132 W17A	APP CRS 172°	Rwy Idg TDZE Apt Elev	5800 1234 1234
----------------------------------------	------------------------	-----------------------------	-------------------------------------------

RNAV (GPS) RWY 17

AUSTIN MUNI (AUM)

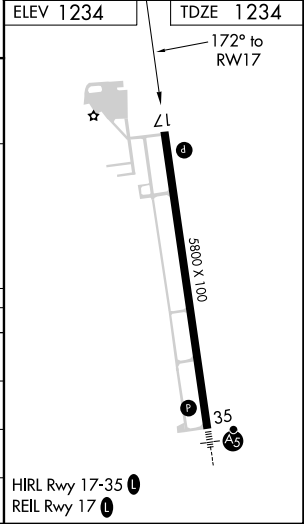
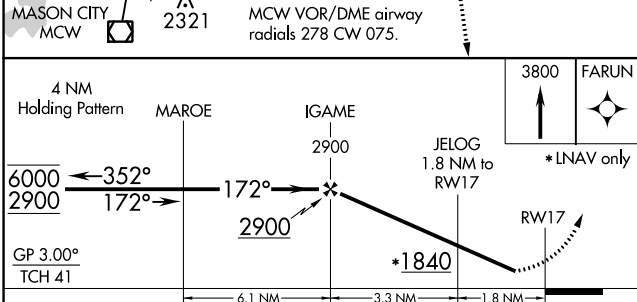
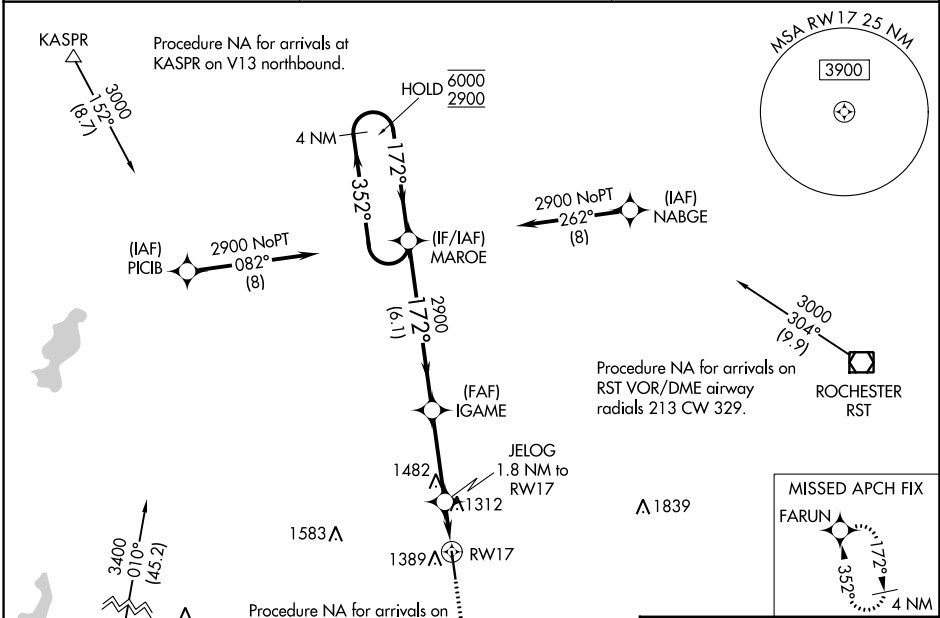
RNP APCH.
 ▽ Rwy 17 helicopter visibility reduction below 3/4 SM NA.
 ▲ For uncompensated Baro-VNAV systems, LNAV/VNAV NA below -17°C or above 54°C.

MISSED APPROACH:
 Climb to 3800 direct FARUN and hold.

AWOS-3
119.025

ROCHESTER APP CON*
119.8 251.125

UNICOM
122.7 (CTAF) **0**



CATEGORY	A	B	C	D
LPV DA		1484-1	250 (300-1)	
LNAV/VNAV DA		1505-1	271 (300-1)	
LNAV MDA		1580-1	346 (400-1)	
CIRCLING	1700-1	466 (500-1)	1800-1½ 566 (600-1½)	1880-2 646 (700-2)

NC-1, 07 SEP 2023 to 05 OCT 2023

NC-1, 07 SEP 2023 to 05 OCT 2023