

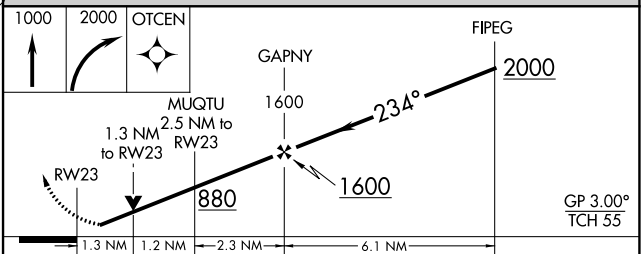
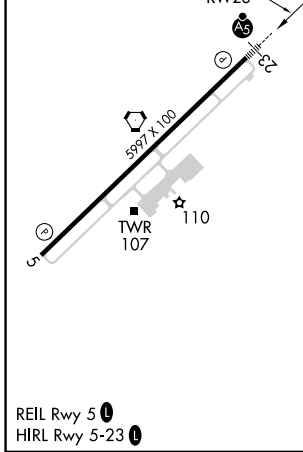
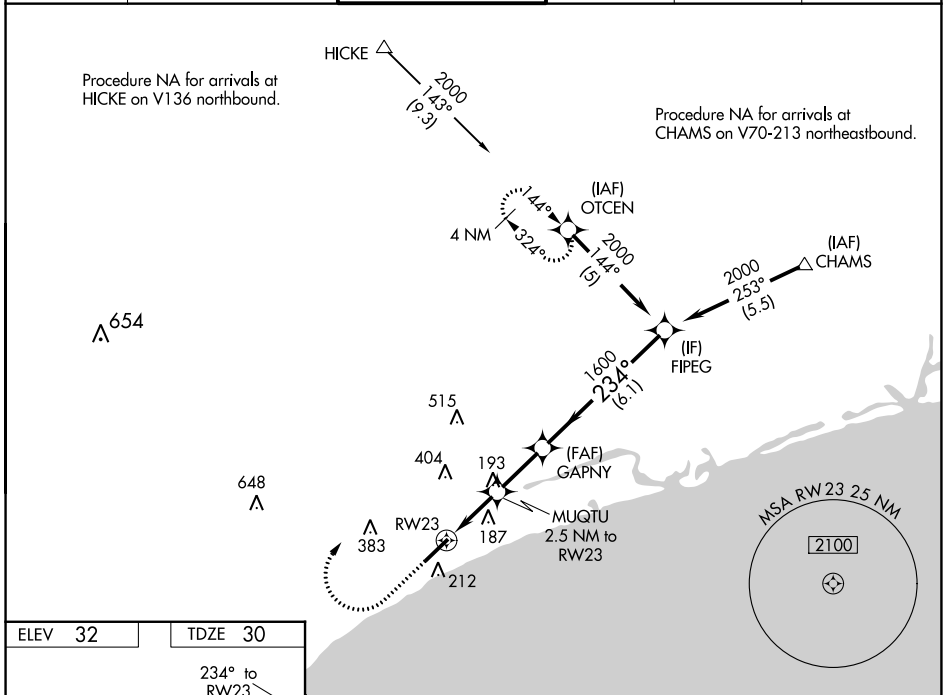
WAAS CH <b>42819</b> <b>W23A</b>	APP CRS <b>234°</b>	Rwy Idg TDZE <b>30</b> Apt Elev <b>32</b>	<b>5997</b>
--	------------------------	---	-------------

# RNAV (GPS) RWY 23

GRAND STRAND (CRE)

RNP APCH-GPS.		MALSR	MISSED APPROACH: Climb to 1000 then climbing right turn to 2000 direct OTCEN and hold.
<p><b>⚠</b> Rwy 23 helicopter visibility reduction below 3/4 SM NA. For uncompensated Baro-VNAV systems, LNAV/VNAV NA below -7°C or above 54°C. For inop ALS, increase LNAV/VNAV all Cats visibility to 1 1/8 SM; increase LNAV Cats A/B visibility to 1 SM.</p>			

ATIS <b>119.625</b>	MYRTLE BEACH APP CON* <b>119.2 350.3</b>	STRAND TOWER* <b>124.6 (CTAF) 0 257.6</b>	GND CON <b>121.8 257.6</b>	CLNC DEL <b>121.8</b>	UNICOM <b>122.95</b>
------------------------	---	--	-------------------------------	--------------------------	-------------------------



CATEGORY	A	B	C	D
LPV DA		230-1/2	200 (200-1/2)	
LNAV/VNAV DA		412-3/4	382 (400-3/4)	
LNAV MDA	480-3/4	450 (500-3/4)	480-7/8	450 (500-7/8)
<b>C</b> CIRCLING	520-1	488 (500-1)	720-2 688 (700-2)	720-2 1/4 688 (700-2 1/4)

SE-2, 07 SEP 2023 to 05 OCT 2023

SE-2, 07 SEP 2023 to 05 OCT 2023