

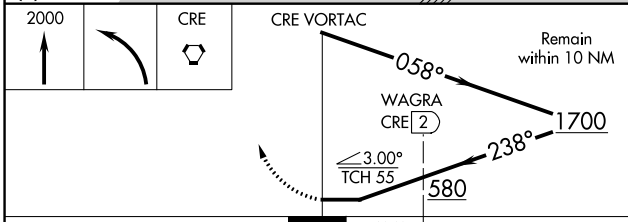
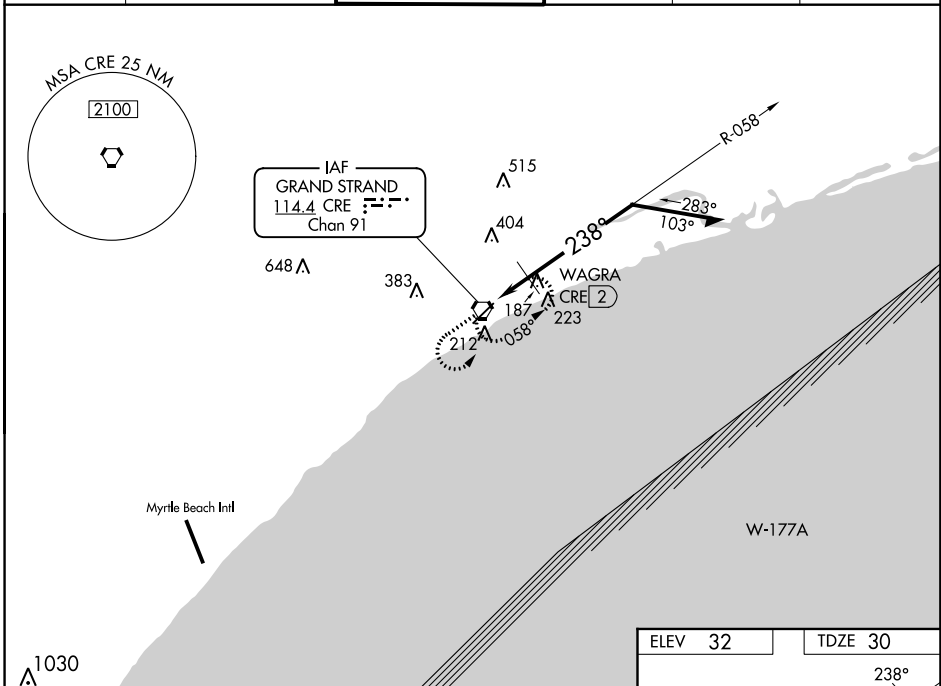
VORTAC CRE <b>114.4</b> Chan <b>91</b>	APP CRS <b>238°</b>	Rwy Idg <b>5997</b> TDZE <b>30</b> Apt Elev <b>32</b>
--	------------------------	---

# VOR RWY 23

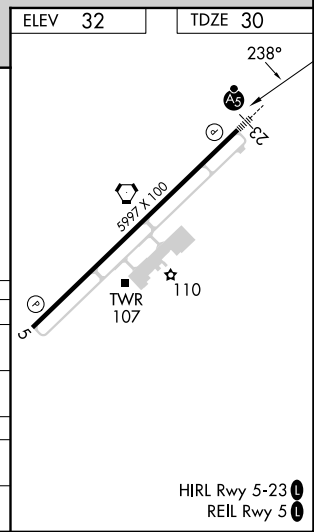
GRAND STRAND (CRE)

<p><b>⚠</b> Rwy 23 helicopter visibility reduction below <math>\frac{3}{4}</math> SM NA. For inop ALS, increase S-23 Cats A/B visibility to 1 SM.</p>	<p>MALSR</p>	<p>MISSED APPROACH: Climb to 2000 then left turn direct CRE VORTAC and hold.</p>			
			<p>ATIS <b>119.625</b></p>	<p>MYRTLE BEACH APP CON* <b>119.2 350.3</b></p>	<p>STRAND TOWER* <b>124.6 (CTAF) 257.6</b></p>

ATIS <b>119.625</b>	MYRTLE BEACH APP CON* <b>119.2 350.3</b>	STRAND TOWER* <b>124.6 (CTAF) 257.6</b>	GND CON <b>121.8 257.6</b>	CLNC DEL <b>121.8</b>	UNICOM <b>122.95</b>
------------------------	---	--	-------------------------------	--------------------------	-------------------------



CATEGORY	A	B	C	D
S-23	580- $\frac{3}{4}$	550 (600- $\frac{3}{4}$ )	580-1 $\frac{1}{8}$	550 (600-1 $\frac{1}{8}$ )
<b>C</b> CIRCLING	580-1	548 (600-1)	720-2 688 (700-2)	720-2 $\frac{1}{4}$ 688 (700-2 $\frac{1}{4}$ )
WAGRA FIX MINIMUMS				
S-23	480- $\frac{3}{4}$	450 (500- $\frac{3}{4}$ )	480- $\frac{7}{8}$	450 (500- $\frac{7}{8}$ )
<b>C</b> CIRCLING	520-1	488 (500-1)	720-2 688 (700-2)	720-2 $\frac{1}{4}$ 688 (700-2 $\frac{1}{4}$ )



SE-2, 07 SEP 2023 to 05 OCT 2023

SE-2, 07 SEP 2023 to 05 OCT 2023