

WAAS CH 61106 W20A	APP CRS 197°	Rwy Idg TDZE 442 Apt Elev 444
--	------------------------	---

RNAV (GPS) RWY 20

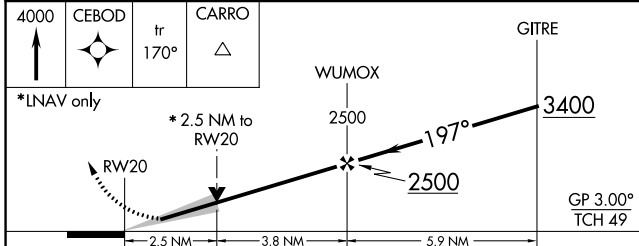
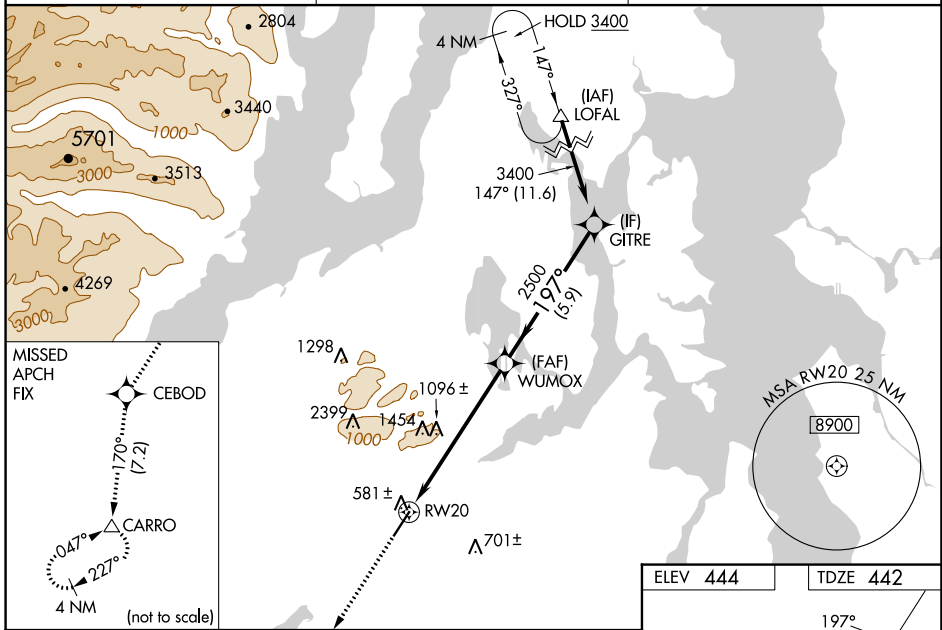
BREMERTON NTL (PWT)

RNP APCH.

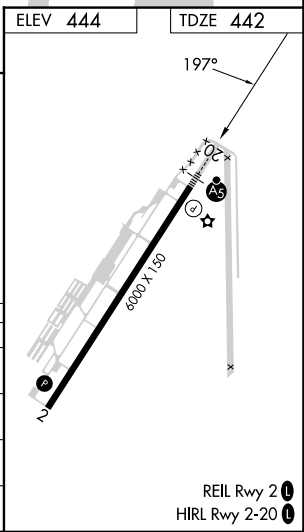
⚠ Circling NA for Cats C and D west of Rwy 2-20. For uncompensated Baro-VNAV systems, LNAV/VNAV NA below -15°C or above 54°C. Baro-VNAV and VDP NA when using Seattle-Tacoma Intl altimeter setting. When local altimeter setting not received, use Seattle-Tacoma Intl altimeter setting and increase all DA 45 feet and all MDA 60 feet; increase LNAV Cat A and increase Circling Cats C/D visibility ½ SM. Inop table does not apply to LNAV/VNAV all Cats.

MALSR MISSED APPROACH: Climb to 4000 direct CEBOD and on track 170° to CARRO and hold, continue climb-in-hold to 4000.

AWOS-3PT 121.2	SEATTLE APP CON 120.1 254.4 269.125	UNICOM 123.05 (CTAF) 0
--------------------------	---	----------------------------------



CATEGORY	A	B	C	D
LPV DA	642-½ 200 (200-½)			
LNAV/VNAV DA	1396-4 954 (1000-4)			
LNAV MDA	1300-½ 858 (900-½)	1300-¾ 858 (900-¾)	1300-2	858 (900-2)
C CIRCLING	1300-1¼	856 (900-1¼)	1300-2½ 856 (900-2½)	1300-2¾ 856 (900-2¾)



NW-1, 07 SEP 2023 to 05 OCT 2023

NW-1, 07 SEP 2023 to 05 OCT 2023

REIL Rwy 2 0
HIRL Rwy 2-20 0