

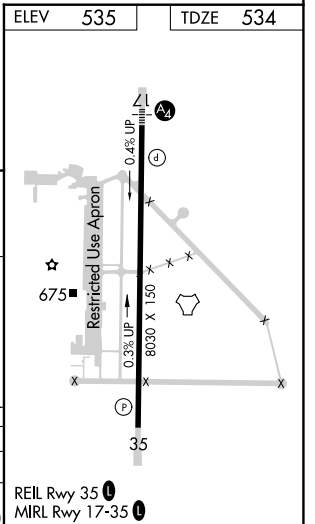
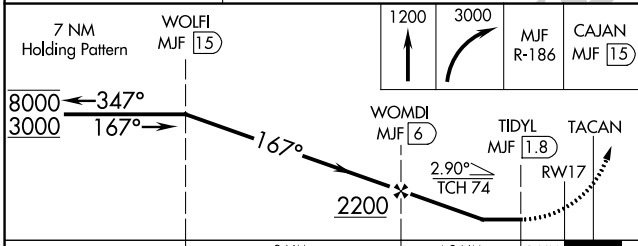
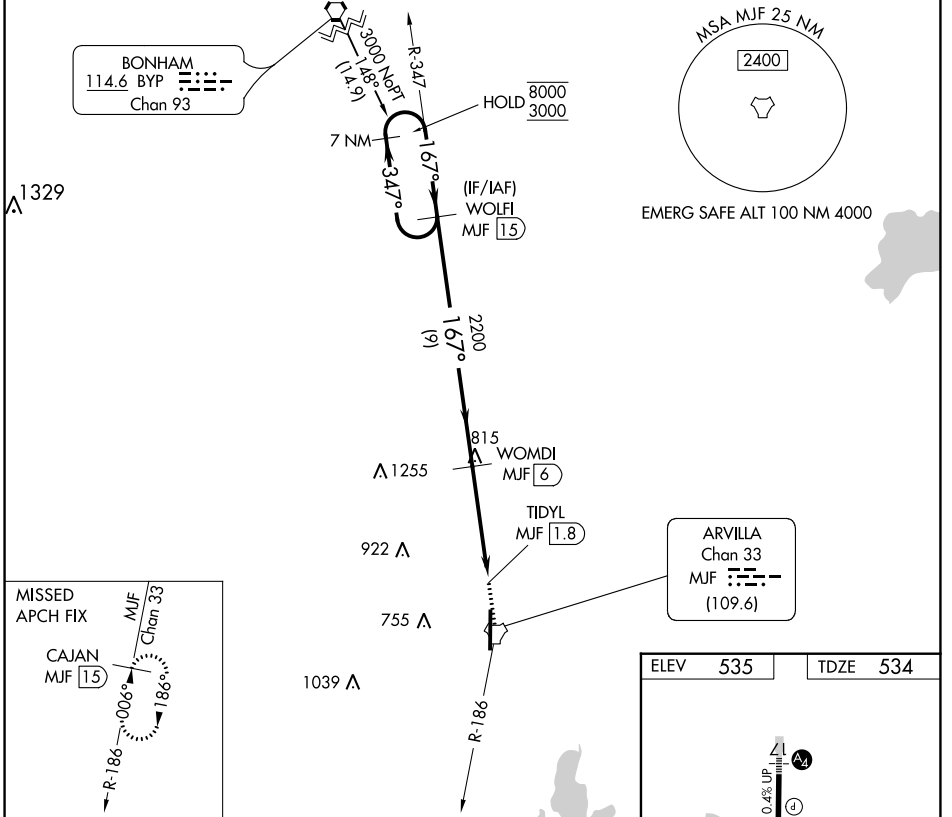
TACAN MJF Chan <b>33</b> (109.6)	APP CRS <b>167°</b>	Rwy Idg TDZE Apt Elev	<b>8030</b> <b>534</b> <b>535</b>
--	------------------------	-----------------------------	---

# TACAN RWY 17

MAJORS (GVT)

	For inop ALS, increase S-17 Cat E visibility to 1½ SM.	MALS 	MISSED APPROACH: Climb to 1200 then climbing right turn to 3000 on MJF TACAN R-186 to CAJAN/MJF 15 DME and hold.
--	--	----------	--

AWOS-3 <b>133.425</b>	FORT WORTH CENTER <b>132.025 360.75</b>	MAJORS TOWER ★ <b>118.65</b> (CTAF) <b>0 385.425</b>	GND CON <b>121.7 335.8</b>	UNICOM <b>122.95</b>
--------------------------	--	---	-------------------------------	-------------------------



CATEGORY	A	B	C	D	E
S-TACAN 17	1060-1	526 (600-1)	1060-1¼ 526 (600-1¼)		
CIRCLING	1060-1¼	525 (600-1¼)	1060-1½ 525 (600-1½)	1240-2¼ 705 (800-2¼)	1300-2¾ 765 (800-2¾)

SC-2, 07 SEP 2023 to 05 OCT 2023

SC-2, 07 SEP 2023 to 05 OCT 2023