

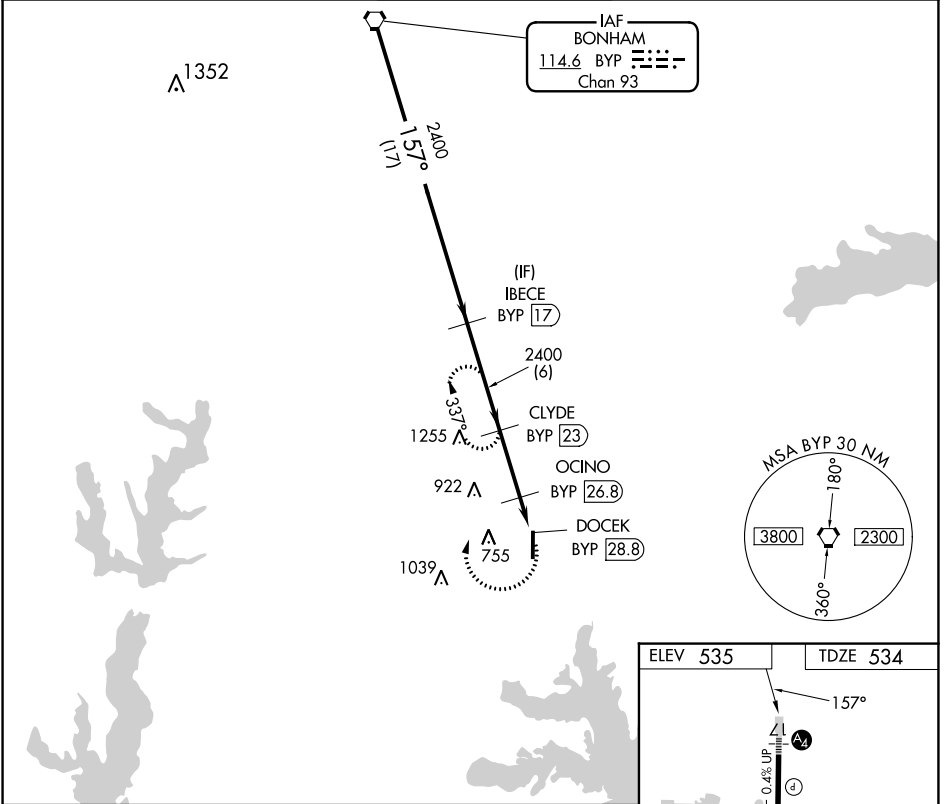
VORTAC BYP <b>114.6</b> Chan 93	APP CRS <b>157°</b>	Rwy Idg <b>8030</b>
	TDZE <b>534</b>	
	Apt Elev <b>535</b>	

# VOR/DME RWY 17

MAJORS (GVT)

<b>⚠</b> When local altimeter setting not received, use Terrell altimeter setting and increase all MDA 80 feet, increase Circling Cats C/D/E visibility by ½ SM.	<b>MALS</b> <b>⚠</b>	<b>MISSED APPROACH:</b> Climbing right turn to 2400 via BYP R-157 to CLYDE /23 DME and hold.
--	-------------------------	--

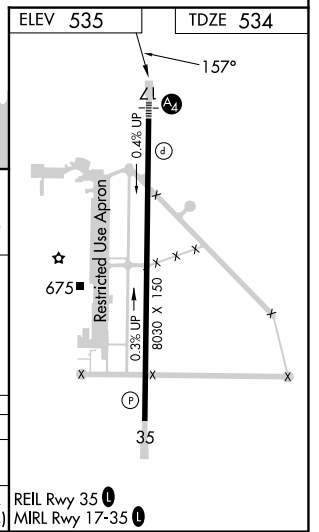
<b>AWOS-3</b> <b>133.425</b>	<b>FORT WORTH CENTER</b> <b>132.025 360.75</b>	<b>MAJORS TOWER ★</b> <b>118.65 (CTAF) 0 385.425</b>	<b>GND CON</b> <b>121.7 335.8</b>	<b>UNICOM</b> <b>122.95</b>
---------------------------------	---	---	--------------------------------------	--------------------------------



VGSI and descent angles not coincident (VGSI Angle 3.00/TCH 74).

Procedure Turn NA	BYB VORTAC	IBECE BYB (17)	CLYDE BYB (23)	OCINO BYB (26.8)	DOCEK BYB (28.8)
	2400	2400	2400	*1240	3.16° TCH 50
	17 NM	6 NM	3.8 NM	2 NM	

\*1300 when using Terrell Muni altimeter setting.



CATEGORY	A	B	C	D	E
S-17	1120-1 586 (600-1)	1120-1¼ 586 (600-1¼)	1120-1½ 586 (600-1½)	1120-2 586 (600-2)	
<b>C</b> CIRCLING	1120-1 585 (600-1)	1120-1¼ 585 (600-1¼)	1120-1½ 585 (600-1½)	1240-2¼ 705 (800-2¼)	1300-2¾ 765 (800-2¾)

SC-2, 07 SEP 2023 to 05 OCT 2023

SC-2, 07 SEP 2023 to 05 OCT 2023