

WAAS CH <b>90108</b> <b>W17A</b>	APP CRS <b>174°</b>	Rwy Ldg <b>7401</b> TDZE <b>1000</b> Apt Elev <b>1000</b>
--	------------------------	---

# RNAV (GPS) RWY 17

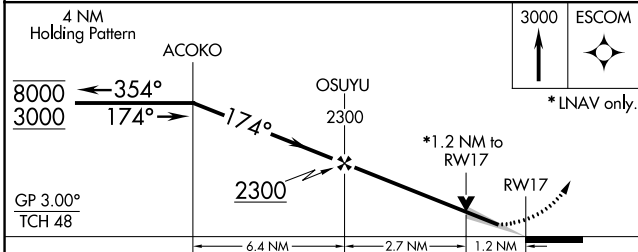
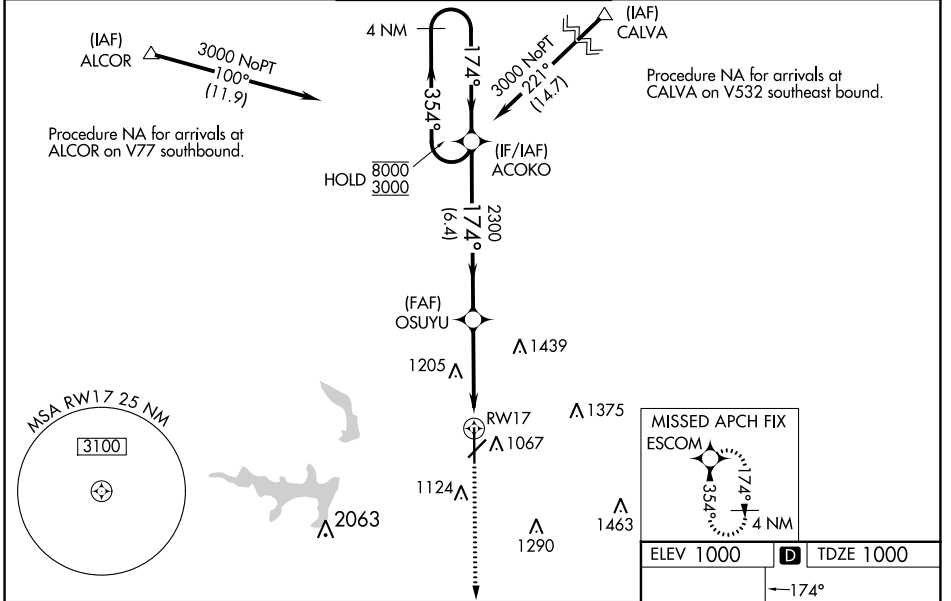
STILLWATER RGNL (SWO)

RNP APCH - GPS.

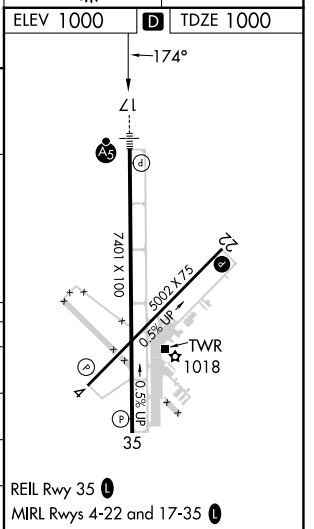
**⚠** For uncompensated Baro-VNAV systems, LNAV/VNAV NA below -15°C or above 54°C. VDP and Baro-VNAV NA when using Ponca City altimeter setting. For inop ALS when using Ponca City altimeter setting, increase LPV visibility to ¾ SM, LNAV/VNAV visibility to 1 SM, and LNAV Cats C and D visibility to 1 ¾ SM. When local altimeter setting not received, use Ponca City altimeter setting; increase LPV DA to 1280 feet; increase LNAV/VNAV DA to 1359 feet and all visibilities ½ SM; increase all MDA 80 feet and visibility LNAV Cats C and D ¼ SM and Circling Cat D ½ SM. For inop ALS, increase LNAV/VNAV visibility to ¾ SM.

**MALSR** MISSED APPROACH: Climb to 3000 direct ESCOM and hold.

ASOS <b>135.725</b>	KANSAS CITY CENTER <b>127.8 319.1</b>	STILLWATER TOWER ★ <b>125.35 (CTAF) 0</b>	GND CON <b>121.6</b>	UNICOM <b>122.95</b>
------------------------	--	--	-------------------------	-------------------------



CATEGORY	A	B	C	D
LPV DA		1200-½	200 (200-½)	
LNAV/VNAV DA		1279-½	279 (300-½)	
LNAV MDA	1440-½	440 (500-½)	1440-¾	440 (500-¾)
<b>C</b> CIRCLING	1440-1 440 (500-1)	1460-1 460 (500-1)	1520-1½ 520 (600-1½)	1740-2¼ 740 (800-2¼)



SC-1, 07 SEP 2023 to 05 OCT 2023

SC-1, 07 SEP 2023 to 05 OCT 2023