


|  |                        |   |
|--|------------------------|---|
| VOR/DME SWO<br><b>108.4</b><br>Chan 21 | APP CRS<br><b>178°</b> | Rwy Idg <b>7401</b><br>TDZE <b>1000</b><br>Apt Elev <b>1000</b> |
|--|------------------------|---|

# VOR RWY 17

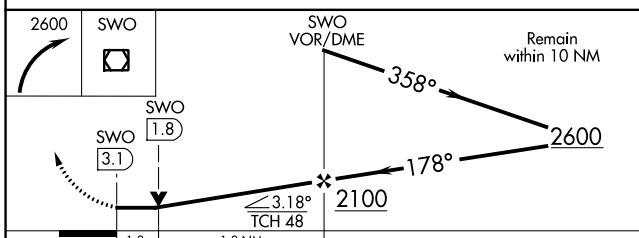
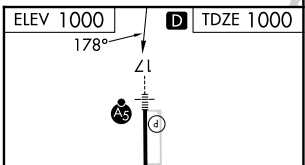
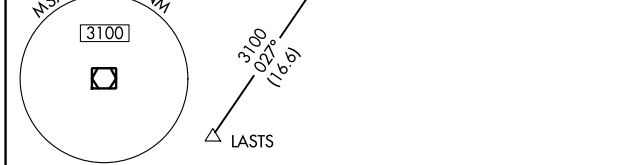
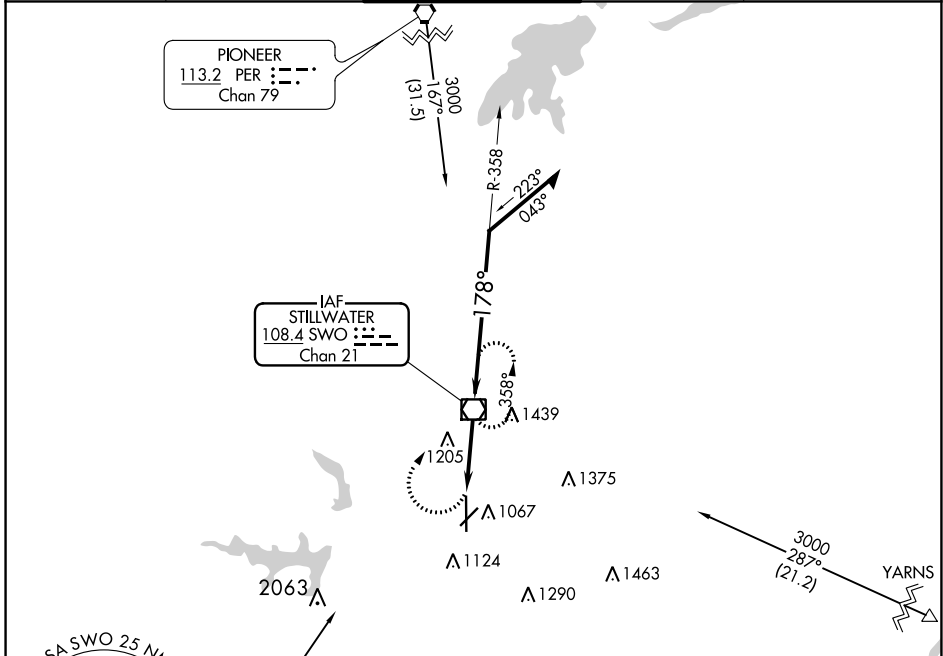
STILLWATER RGNL (SWO)



⚠ When local altimeter setting not received, use Ponca City Rgnl altimeter setting and increase all MDA 80 feet and Circling Cat D visibility ½ mile. VDP NA with Ponca City altimeter setting. For inop MALSRS increase S-17 Cats A/B visibility to 1 mile. Helicopter visibility reduction below ¾ SM NA.

MALSRS 

MISSED APPROACH: Climbing right turn to 2600 direct SWO VOR/DME and hold.

|                        |  |  |                         |                         |
|------------------------|--|--|-------------------------|-------------------------|
| ASOS<br><b>135.725</b> | KANSAS CITY CENTER<br><b>127.8 319.1</b> | STILLWATER TOWER ★<br><b>125.35 (CTAF) 0</b> | GND CON<br><b>121.6</b> | UNICOM<br><b>122.95</b> |
|------------------------|--|--|-------------------------|-------------------------|



|   |                    |                      |                      |                    |
|---|--------------------|----------------------|----------------------|--------------------|
| CATEGORY  | A                  | B                    | C                    | D                  |
| S-17  | 1460-¾ 460 (500-¾) |                      |                      | 1460-1 460 (500-1) |
| CIRCLING  | 1460-1 460 (500-1) | 1520-1½ 520 (600-1½) | 1740-2¼ 740 (800-2¼) |                    |
| REIL Rwy 35              |                    |                      |                      |                    |
| MIRL Rwy 4-22 and 17-35  |                    |                      |                      |                    |
| FAF to MAP 3.1 NM   |                    |                      |                      |                    |
| Knots   | 60                 | 90                   | 120                  | 150 180            |
| Min:Sec   | 3:06               | 2:04                 | 1:33                 | 1:14 1:02          |

SC-1, 07 SEP 2023 to 05 OCT 2023

SC-1, 07 SEP 2023 to 05 OCT 2023