

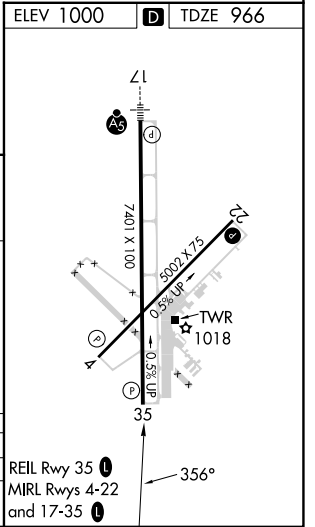
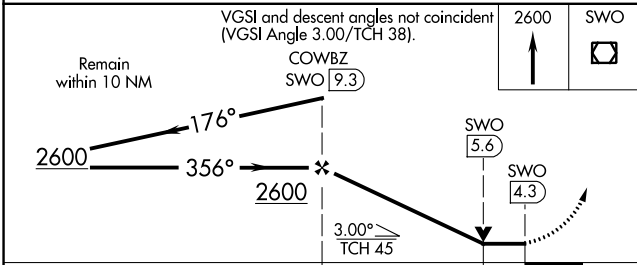
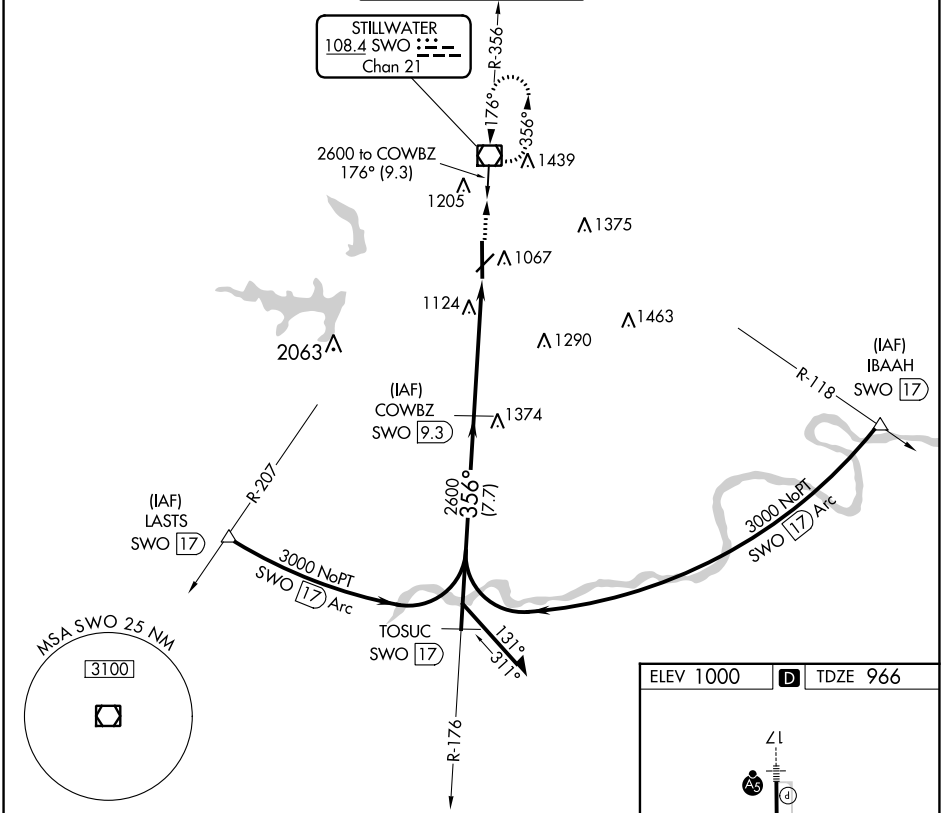
VOR/DME SWO 108.4 Chan 21	APP CRS 356°	Rwy Idg TDZE Apt Elev	7401 966 1000
--	------------------------	-----------------------------	--

VOR/DME RWY 35
STILLWATER RGNL (SWO)

⚠ When local altimeter setting not received, use Ponca City Rgnl altimeter setting and increase all MDA 80 feet; S-35 Cats C/D visibility ¼ mile; Circling Cat D visibility ½ mile. VDP NA with Ponca City altimeter setting.

⚠ MISSED APPROACH: Climb to 2600 direct SWO VOR/DME and hold.

ASOS 135.725	KANSAS CITY CENTER 127.8 319.1	STILLWATER TOWER ★ 125.35 (CTAF) 0	GND CON 121.6	UNICOM 122.95
------------------------	--	--	-------------------------	-------------------------



CATEGORY	A		B		C		D	
S-35	1380-1	414 (400-1)	1380-1¼	414 (400-1¼)				
CIRCLING	1420-1 420 (500-1)	1460-1 460 (500-1)	1520-1½ 520 (600-1½)	1740-2¼ 740 (800-2¼)				

REIL Rwy 35
MIRL Rwy 4-22 and 17-35

SC-1, 07 SEP 2023 to 05 OCT 2023

SC-1, 07 SEP 2023 to 05 OCT 2023