


WAAS CH <b>69222</b> <b>W13A</b>	APP CRS <b>130°</b>	Rwy Idg TDZE Apt Elev	<b>6758</b> <b>1354</b> <b>1354</b>
--	------------------------	-----------------------------	---

# RNAV (GPS) RWY 13

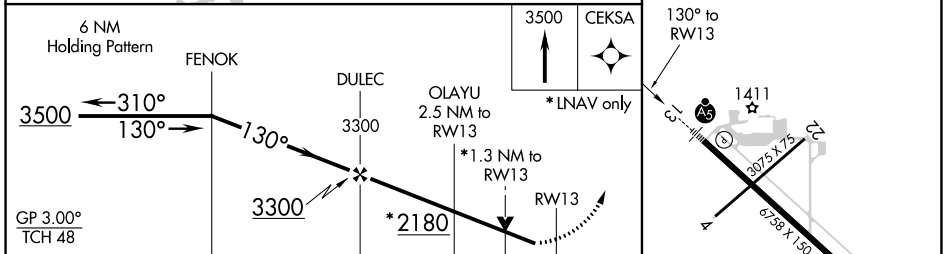
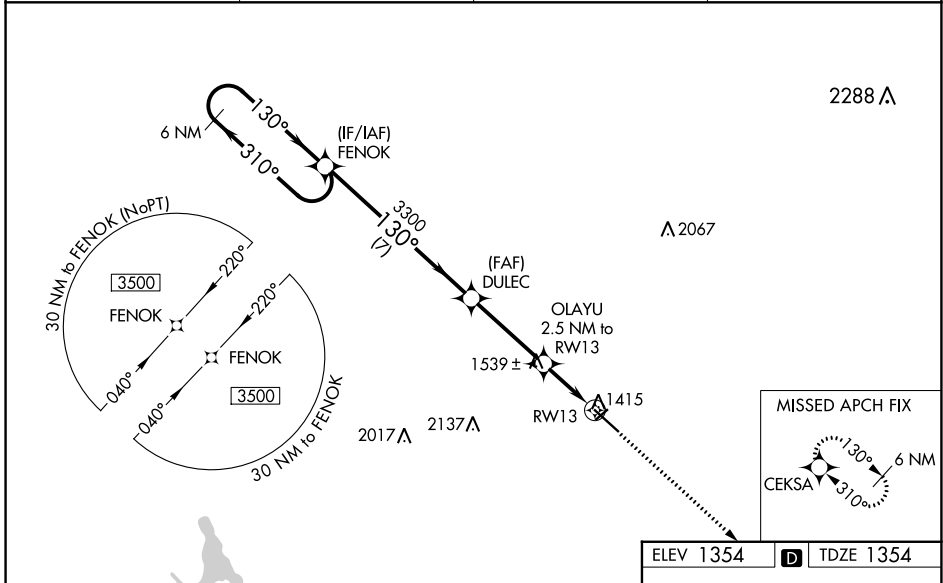
RANGE RGNL (HIB)

**⚠** Circling to Rwy 4 NA at night. DME/DME RNP-0.3 NA. VDP and Baro-VNAV NA when using Eveleth altimeter setting. For uncompensated Baro-VNAV systems, LNAV/VNAV NA below -17°C (2°F) or above 35°C (95°F). Helicopter visibility reduction below ¾ SM NA. When local altimeter setting not received, use Eveleth altimeter setting and increase all DA 36 feet, and all MDA 40 feet, and increase LNAV Cat C/D visibility to 1 mile. Inop table does not apply to LPV and LNAV/VNAV all Cats. For inop MALSRS, increase LNAV Cat A/B visibility to 1 mile. For inop MALSRS when using Eveleth altimeter setting, increase LPV and LNAV/VNAV all Cats visibility to ¾.

MALSRS 

**MISSED APPROACH:** Climb to 3500 direct CEKSA and hold.

ASOS <b>126.425</b>	DULUTH APP CON <b>125.45 233.7</b>	CLNC DEL <b>127.4</b>	UNICOM <b>123.0 (CTAF) 0</b>
------------------------	---------------------------------------	--------------------------	---------------------------------



CATEGORY	A	B	C	D
LPV DA		1604-¾	250 (300-¾)	
LNAV/VNAV DA		1614-¾	260 (300-¾)	
LNAV MDA	1800-¾	446 (500-¾)	1800-7/8	446 (500-7/8)
CIRCLING	1820-1 466 (500-1)	1840-1 486 (500-1)	1840-1½ 486 (500-1½)	1960-2 606 (700-2)

ELEV 1354 **D** TDZE 1354

HIRL Rwy 13-31 **0**

NC-1, 07 SEP 2023 to 05 OCT 2023

NC-1, 07 SEP 2023 to 05 OCT 2023