

VORTAC OOM 110.2 Chan 39	APP CRS 169°	Rwy Idg 6500 TDZE 846 Apt Elev 846
--	------------------------	---

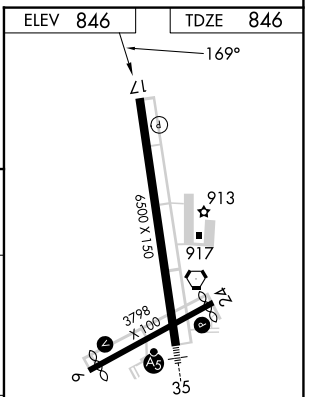
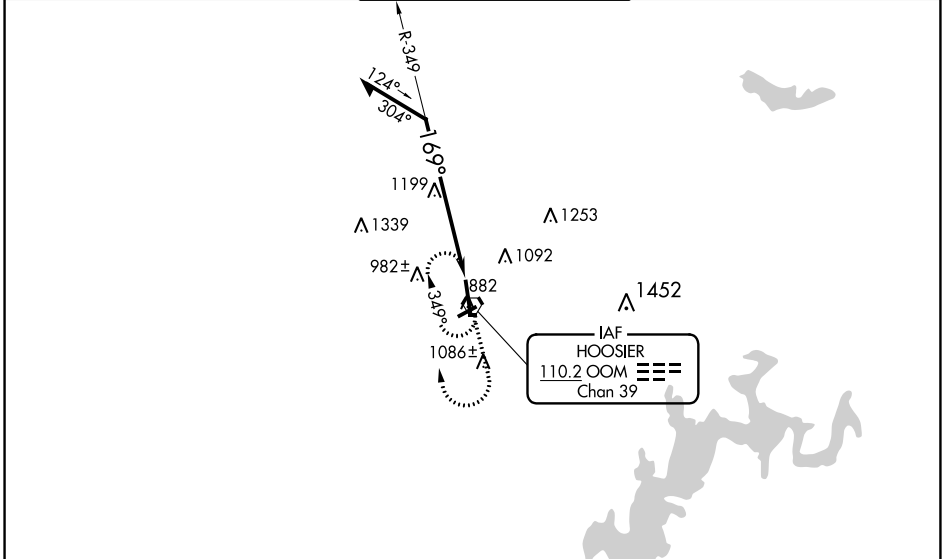
VOR RWY 17

MONROE COUNTY (BMG)

⚠ Helicopter visibility reduction below 3/4 SM NA. Circling to Rwy 6/24 NA at night.
⚠ When local altimeter setting not received use Terre Haute Rgnl altimeter setting; increase all MDA 140 feet; increase S-17 and Circling Cat C and D visibility 1/2 SM.

MISSED APPROACH: Climb to 1800 then climbing right turn to 2500 direct OOM VORTAC and hold.

ASOS 134.525	HULMAN APP CON ★ 128.025 339.8	BLOOMINGTON TOWER ★ 120.775 (CTAF) 0	GND CON 121.9	UNICOM 122.95
------------------------	--	---	-------------------------	-------------------------



REMAIN WITHIN 10 NM	2500	349°	169°	OOM VORTAC
---------------------	------	------	------	------------

CATEGORY	A	B	C	D
S-17	1560-1 714 (800-1)	1560-2 714 (800-2)	1560-2 714 (800-2)	1560-2 714 (800-2)
CIRCLING	1560-1 714 (800-1)	1560-2 714 (800-2)	1560-2 714 (800-2)	1560-2 714 (800-2)

MIRL Rwy 6-24
 HIRL Rwy 17-35
 REIL Rwy 17

EC-2, 07 SEP 2023 to 05 OCT 2023

EC-2, 07 SEP 2023 to 05 OCT 2023