

| | | |
|--|------------------------|---|
| VORTAC OOM 110.2 Chan 39 | APP CRS 058° | Rwy Idg 3494 TDZE 840 Apt Elev 846 |
|--|------------------------|---|

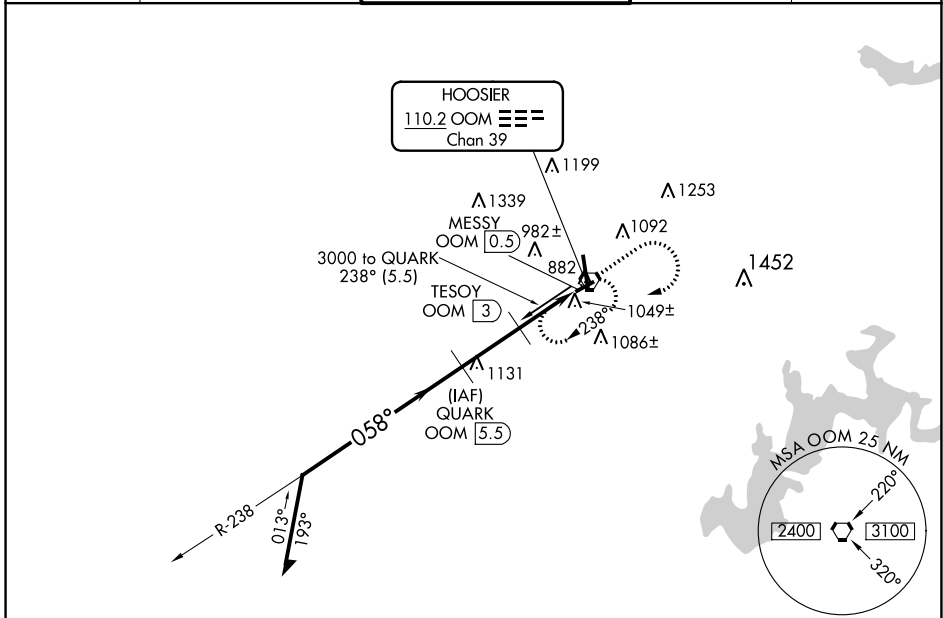
VOR/DME RWY 6

MONROE COUNTY (BMG)

⚠ Rwy 6 Straight-in and Circling and Circling to Rwy 24 NA at night. Helicopter visibility reduction below 1 SM NA. When local altimeter setting not received, use Terre Haute Rgnl altimeter setting; increase all MDA 140 feet and S-6 Cat C and D visibility $\frac{3}{8}$ SM, Circling Cat C and D visibility $\frac{1}{2}$ SM.

MISSED APPROACH: Climb to 2000 then climbing right turn to 3000 direct OOM VORTAC and hold.

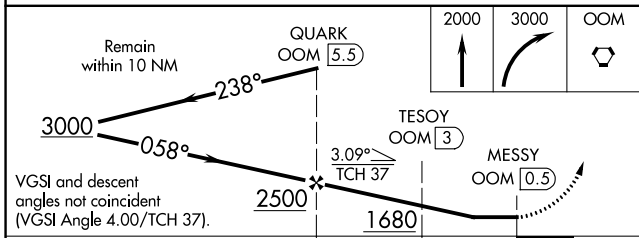
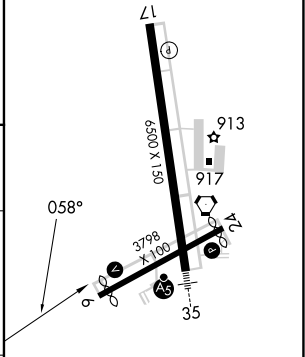
| | | | | |
|------------------------|--|--|-------------------------|-------------------------|
| ASOS 134.525 | HULMAN APP CON 128.025 339.8 | BLOOMINGTON TOWER ★ 120.775 (CTAF) 0 | GND CON 121.9 | UNICOM 122.95 |
|------------------------|--|--|-------------------------|-------------------------|



EC-2, 07 SEP 2023 to 05 OCT 2023

EC-2, 07 SEP 2023 to 05 OCT 2023

| | |
|----------|----------|
| ELEV 846 | TDZE 840 |
|----------|----------|



| CATEGORY | A | B | C | D |
|----------|-----------------------|-----------------------|--|--|
| S-6 | 1300-1 | 460 (500-1) | 1300-1 $\frac{3}{8}$ | 460 (500-1 $\frac{3}{8}$) |
| CIRCLING | 1380-1 534 (600-1) | 1400-1 554 (600-1) | 1400-1 $\frac{1}{2}$ 554 (600-1 $\frac{1}{2}$) | 1620-2 $\frac{1}{2}$ 774 (800-2 $\frac{1}{2}$) |