

LOC I-TIW 109.1	APP CRS 167°	Rwy ldg 5002
		TDZE 294
		Apt Elev 295

ILS or LOC RWY 17

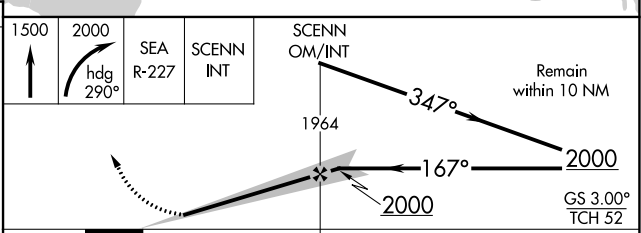
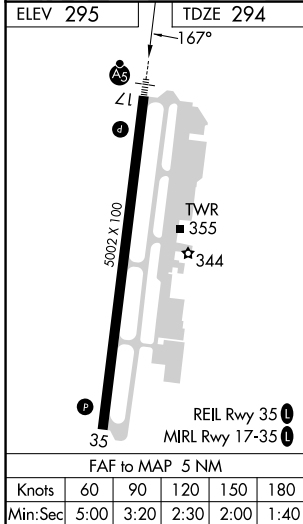
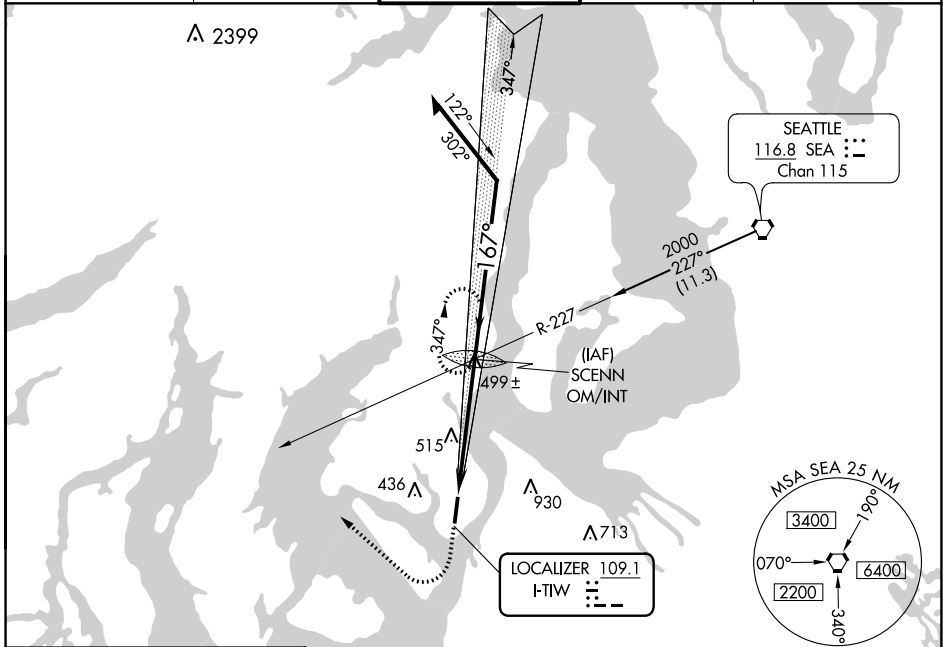
TACOMA NARROWS (TIW)

⚠ When control tower closed, obtain local altimeter setting on UNICOM, when not received, use McChord Fld altimeter setting minimums. Circling not authorized east of Rwy 17-35.

MALSRL

MISSED APPROACH: Climb to 1500, then climbing right turn to 2000 via heading 290° and SEA VORTAC R-227 to SCENN INT and hold.

ATIS 124.05	SEATTLE APP CON 120.1 290.9	TACOMA TOWER* 118.5 (CTAF) 0 253.5	GND CON 121.8	UNICOM 122.95
-----------------------	---------------------------------------	--	-------------------------	-------------------------



CATEGORY	A	B	C	D
S-ILS 17	494-½ 200 (200-½)			
S-LOC 17	760-½	466 (500-½)	466 (500-¾)	760-1 466 (500-1)
CIRCLING	760-1	465 (500-1)	820-1½ 525 (600-1½)	860-2 565 (600-2)
MCCHORD FLD ALTIMETER SETTING MINIMUMS				
S-ILS 17	519-½ 225 (300-½)			
S-LOC 17	780-½	486 (500-½)	780-¾ 486 (500-¾)	780-1 486 (500-1)
CIRCLING	800-1	505 (600-1)	860-1½ 565 (600-1½)	900-2 605 (700-2)

NW-1, 07 SEP 2023 to 05 OCT 2023

NW-1, 07 SEP 2023 to 05 OCT 2023