

LOC/DME I-BQG 110.7 Chan 44	APP CRS 144°	Rwy Idg TDZE Apt Elev	6997 22 22
---	------------------------	-----------------------------	---------------------------------------

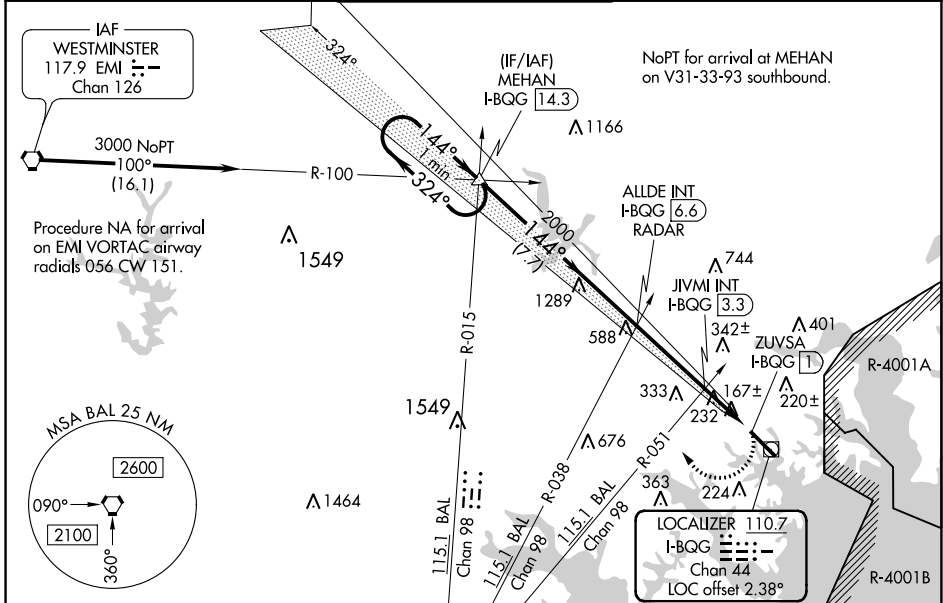
LOC RWY 15

MARTIN STATE (MTN)

When local altimeter setting not received, use Baltimore/Washington Intl Thurgood Marshall altimeter setting; increase all MDA 60 feet and increase S-15 Cat A and Circling Cats C and D visibility 1/4 SM and increase JMWI fix minimums S-15 Cats C and D visibility 1/8 SM and Circling Cat C and D visibility 1/4 SM. Rwy 15 helicopter visibility reduction below 3/4 SM NA. Circling Cat D NA northeast of Rwy 15-33.

MISSED APPROACH: Climbing right turn to 3000 on heading 312° and BAL VORTAC R-015 to MEHAN INT/I-BQG 14.3 DME and hold.

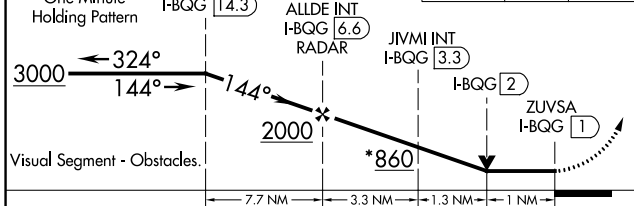
ATIS 124.925	POTOMAC APP CON 119.0 282.275	MARTIN TOWER ★ 121.3 (CTAF) 0 254.425	GND CON 121.8 253.4	UNICOM 122.95
------------------------	---	--	-------------------------------	-------------------------



NE-3, 07 SEP 2023 to 05 OCT 2023

NE-3, 07 SEP 2023 to 05 OCT 2023

*920 when using Baltimore/Washington Intl Thurgood Marshall altimeter setting.	3000 hdg 312°	MEHAN BAL R-015	ELEV 22	TDZE 22
--	------------------	--------------------	---------	---------



HIRL Rwy 15-33 REIL Rws 15 and 33	TWR 98
Rwy 33 Idg 8100' (Military Operations Only) Rwy 15 take-off 8100' (Military Operations Only)	
FAF to MAP 5.6 NM	
Knots	60 90 120 150 180
Min:Sec	5:36 3:44 2:48 2:14 1:52

CATEGORY	A	B	C	D
S-15	860-1 838 (900-1)	860-1 1/4 838 (900-1 1/4)	860-2 1/2 838 (900-2 1/2)	860-2 3/4 838 (900-2 3/4)
JMWI FIX MINIMUMS (DUAL VOR RECEIVERS OR DME REQUIRED)				
S-15	500-1	478 (500-1)	500-1 3/8	478 (500-1 3/8)
CIRCLING	560-1	538 (600-1)	680-1 1/4 658 (700-1 1/4)	740-2 1/4 718 (800-2 1/4)