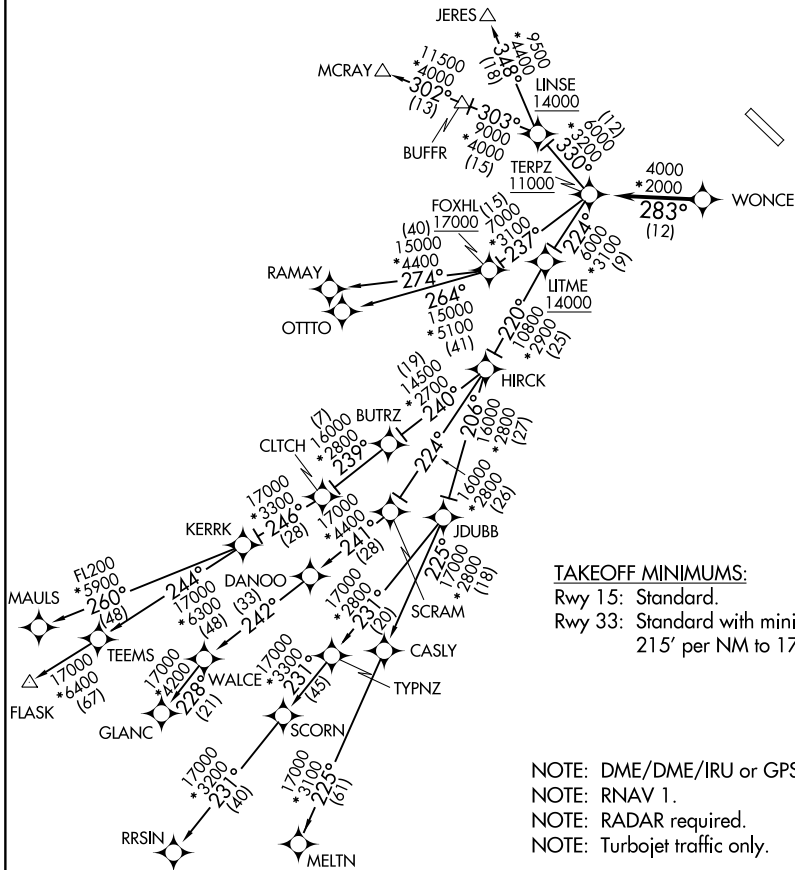


TERPZ SEVEN DEPARTURE (RNAV)

ATIS
 124.925
 GND CON
 121.8 253.4
 MARTIN TOWER ★
 121.3 (CTAF) 254.425
 UNICOM
 122.95
 POTOMAC DEP CON
 119.7 290.475

TOP ALTITUDE:
RAMAY, OTTTO, MAULS, FLASK,
RRSIN, GLANC, MELTN
TRANSITIONS: 17000
JERES, MCRAY TRANSITIONS:
16000



TAKEOFF MINIMUMS:

Rwy 15: Standard.
 Rwy 33: Standard with minimum climb of 215' per NM to 1700.

- NOTE: DME/DME/IRU or GPS required.
- NOTE: RNAV 1.
- NOTE: RADAR required.
- NOTE: Turbojet traffic only.

NOTE: Chart not to scale.

TERPZ SEVEN DEPARTURE (RNAV)

NE-3, 07 SEP 2023 to 05 OCT 2023

NE-3, 07 SEP 2023 to 05 OCT 2023