

WAAS CH <b>56408</b> <b>W36A</b>	APP CRS <b>001°</b>	Rwy Idg <b>4064</b> TDZE <b>16</b> Apt Elev <b>16</b>
----------------------------------------	------------------------	-------------------------------------------------------------

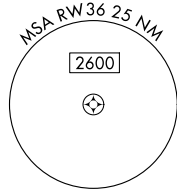
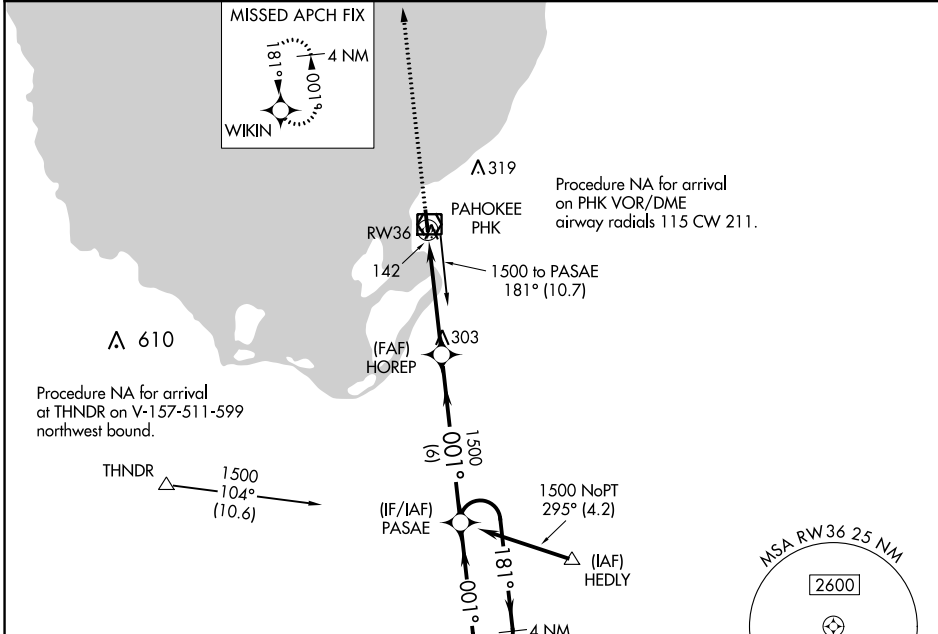
# RNAV (GPS) RWY 36

PALM BEACH COUNTY GLADES (PHK)

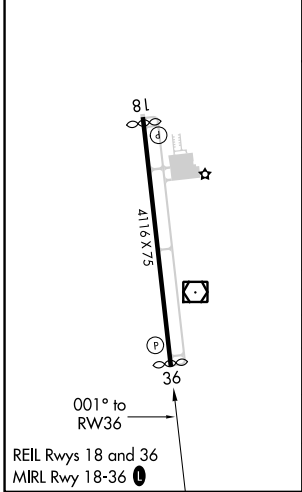
**▽** Baro-VNAV NA. DME/DME RNP-0.3 NA.  
**△** NA Use Palm Beach Intl altimeter setting, when not received, procedure NA.

MISSED APPROACH: Climb to 2000 direct WIKIN and hold.

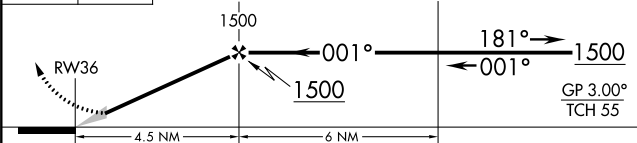
PBI ASOS <b>123.75</b>	PALM BEACH APP CON <b>125.2 317.4</b>	UNICOM <b>122.8 (CTAF) 0</b>
---------------------------	------------------------------------------	---------------------------------



ELEV 16	<b>D</b>	TDZE 16
---------	----------	---------



2000 WIKIN VGSI and RNAV glidepath not coincident (VGSI Angle 3.00/TCH 44).



CATEGORY	A	B	C	D
LPV DA	471-1½ 455 (500-1½)			
LNAV/VNAV DA	429-1¾ 413 (500-1¾)			
LNAV MDA	520-1 504 (600-1)	520-1¾ 504 (600-1¾)		
<b>C</b> CIRCLING	580-1 564 (600-1)	760-2¼ 744 (800-2¼)	760-2½ 744 (800-2½)	

SE-3, 07 SEP 2023 to 05 OCT 2023

SE-3, 07 SEP 2023 to 05 OCT 2023