

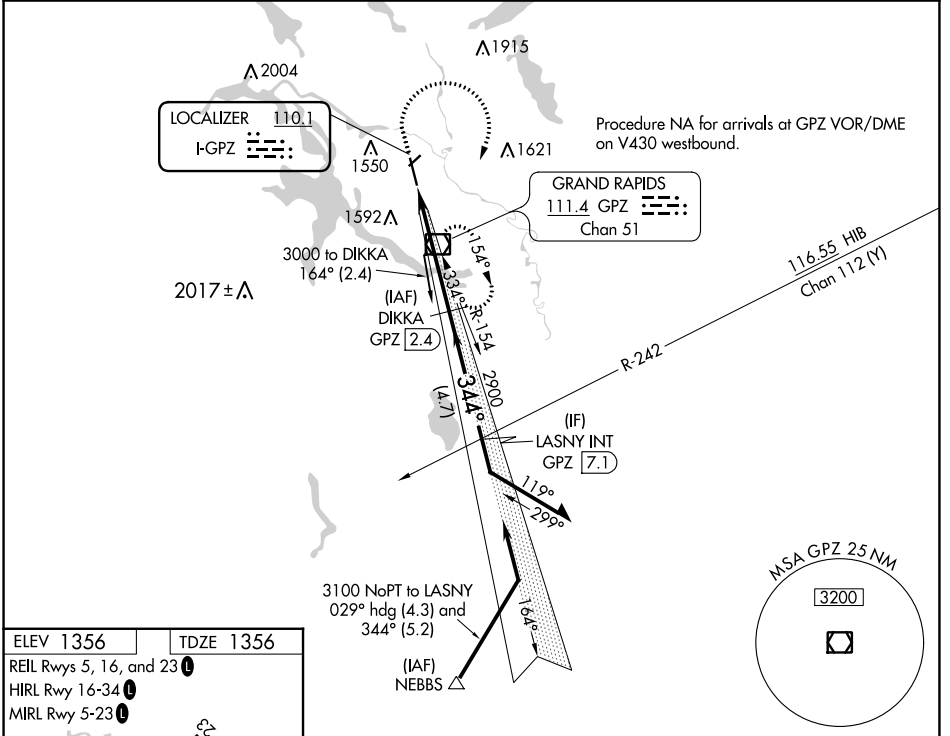
LOC I-GPZ 110.1	APP CRS 344°	Rwy Idg 5756	TDZE 1356	Apt Elev 1356
---------------------------	------------------------	-----------------	--------------	------------------

ILS or LOC RWY 34

GRAND RAPIDS/ITASCA COUNTY-GORDON NEWSTROM FLD (GPZ)

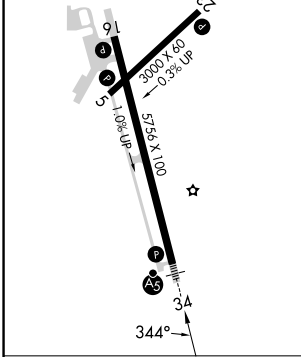
DME required for LOC only.		MALSR	MISSED APPROACH: Climb to 3100 then right turn direct GPZ VOR/DME and hold.
<p>▼ Circling to Rwy 5, 23 NA at night.</p> <p>▲ Circling NA for Cat D east of Rwy 16-34.</p>			

AWOS-3PT 118.425	MINNEAPOLIS CENTER 127.9 281.45	UNICOM 122.8 (CTAF)
----------------------------	---	-------------------------------

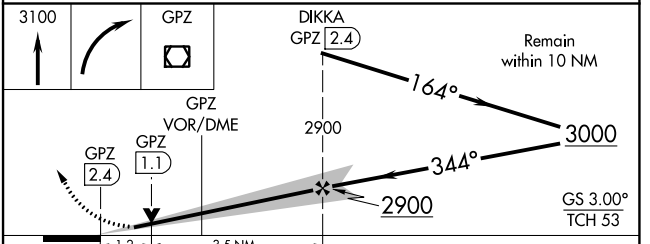


ELEV 1356	TDZE 1356
-----------	-----------

- REIL Rwy 5, 16, and 23
- HIRL Rwy 16-34
- MIRL Rwy 5-23



FAF to MAP 4.7 NM					
Knots	60	90	120	150	180
Min:Sec	4:42	3:08	2:21	1:53	1:34



CATEGORY	A	B	C	D
S-ILS 34	1556-½ 200 (200-½)			
S-LOC 34	1800-½ 444 (500-½)	1800-⅞ 444 (500-⅞)		
CIRCLING	1900-1 544 (600-1)	1900-1½ 544 (600-1½)	1960-2 604 (700-2)	

NC-1, 07 SEP 2023 to 05 OCT 2023

NC-1, 07 SEP 2023 to 05 OCT 2023