


VOR/DME GPZ	APP CRS	Rwy Idg	5756
111.4	334°	TDZE	1356
Chan 51		Apt Elev	1356

VOR RWY 34

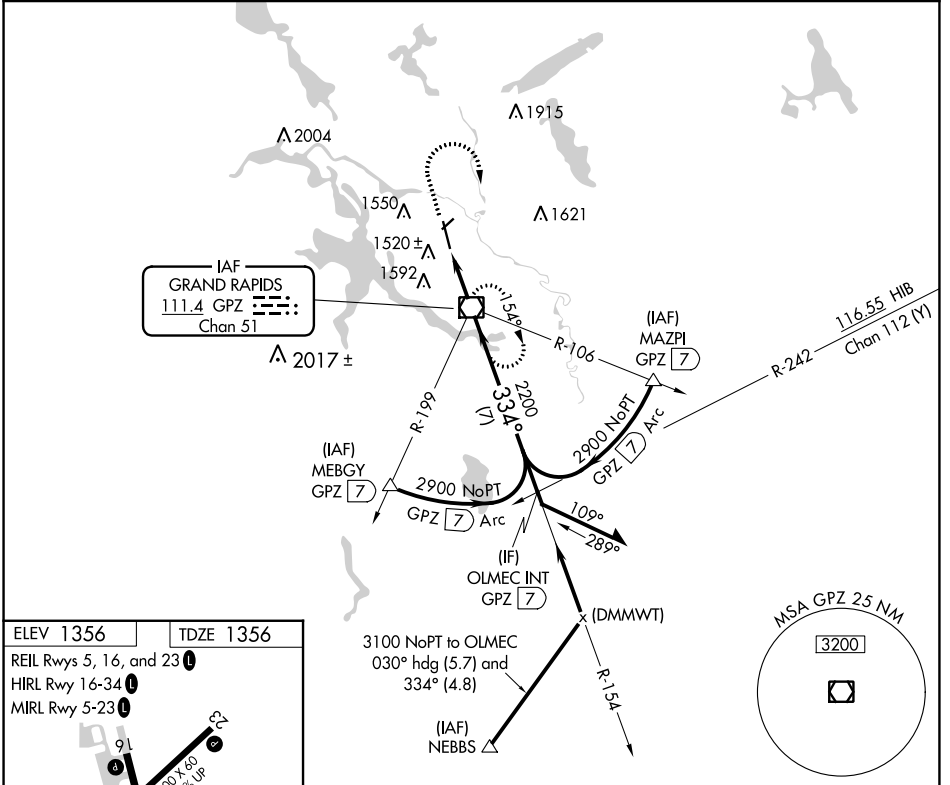
GRAND RAPIDS/ITASCA COUNTY-GORDON NEWSTROM FLD (GPZ)

⚠ VDP NA when using Hibbing's altimeter setting. Circling Rwy 5 NA at night. Circling NA for Cat D east of Rwy 16-34. When local altimeter setting not received, use Hibbing altimeter setting and increase all MDAs 80 feet, increase S-34 Cat C visibility 1/8 SM and Circling Cats C/D visibility 1/4 SM.




MALSR 

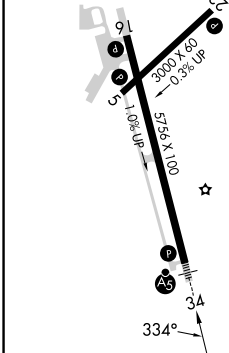
MISSED APPROACH: Climb to 3100 then right turn direct GPZ VOR/DME and hold.

AWOS-3PT 118.425	MINNEAPOLIS CENTER 127.9 281.45	UNICOM 122.8 (CTAF) 0
----------------------------	---	---------------------------------

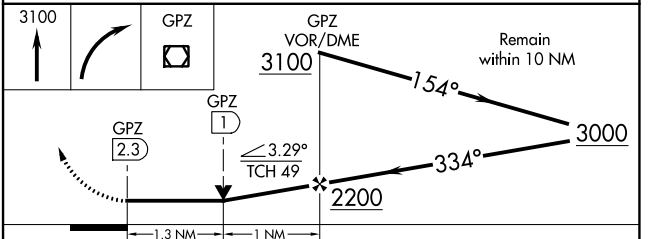



ELEV 1356 TDZE 1356

- REIL Rwy 5, 16, and 23 
- HIRL Rwy 16-34 
- MIRL Rwy 5-23 



FAF to MAP 2.3 NM					
Knots	60	90	120	150	180
Min:Sec	2:18	1:32	1:09	0:55	0:46



CATEGORY	A	B	C	D
S-34	1800-1/2 444 (500-1/2)		1800-7/8 444 (500-7/8)	1800-1 444 (500-1)
 CIRCLING	1900-1 544 (600-1)		1900-1 1/2 544 (600-1 1/2)	2000-2 644 (700-2)

VOR RWY 34

NC-1, 07 SEP 2023 to 05 OCT 2023

NC-1, 07 SEP 2023 to 05 OCT 2023