

WAAS CH 40208 W35A	APP CRS 355°	Rwy Idg 8006 TDZE 163 Apt Elev 214
--	------------------------	---

RNAV (GPS) RWY 35

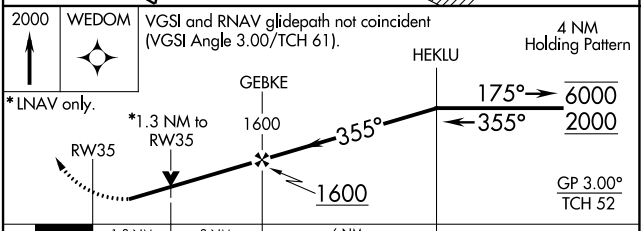
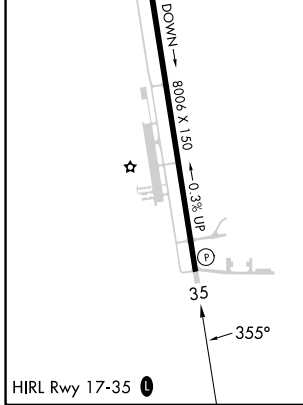
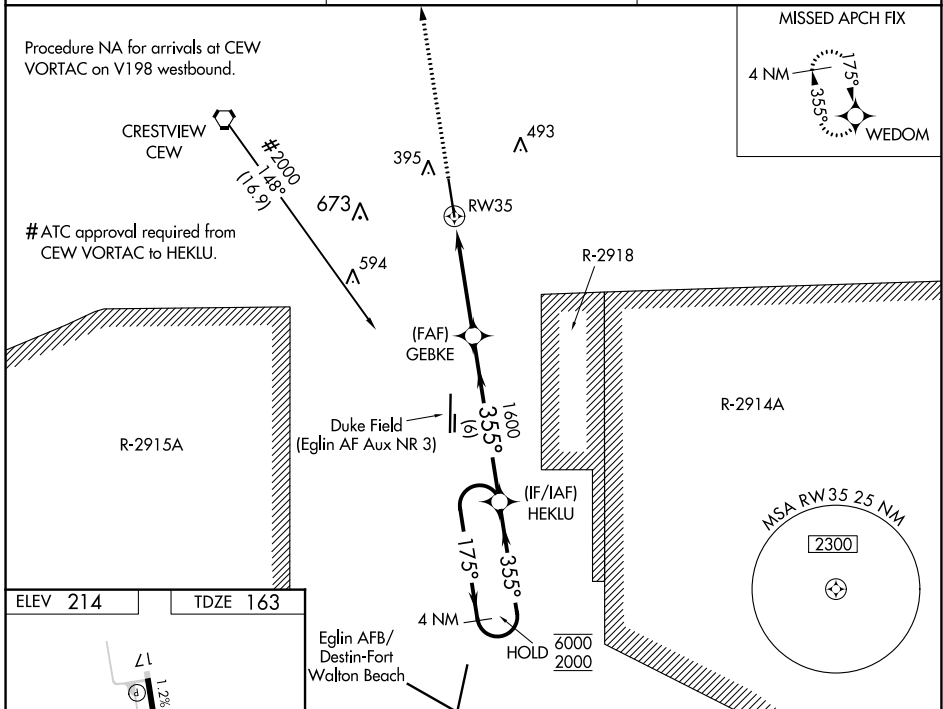
BOB SIKES (CEW)

RNP APCH.

⚠ Baro-VNAV and VDP NA when using Eglin AFB altimeter setting. Rwy 35 helicopter visibility reduction below 3/4 SM NA. For uncompensated Baro-VNAV systems, LNAV/VNAV NA below -5°C or above 54°C. When local altimeter setting not received, use Eglin AFB altimeter setting and increase LPV DA to 509, LNAV/VNAV DA to 550, and all MDA 60 feet, increase LNAV Cat C/D visibility 1/2 SM.

MISSED APPROACH: Climb to 2000 direct WEDOM and hold.

ASOS 119.275	EGLIN APP CON 124.05 284.65	UNICOM 122.95 (CTAF) 0
------------------------	---------------------------------------	---



CATEGORY	A	B	C	D
LPV DA	450-1 287 (300-1)			
LNAV/VNAV DA	491-1 328 (300-1 1/4)			
LNAV MDA	640-1 477 (500-1)		640-1 3/8 477 (500-1 3/8)	

SE-3, 07 SEP 2023 to 05 OCT 2023

SE-3, 07 SEP 2023 to 05 OCT 2023