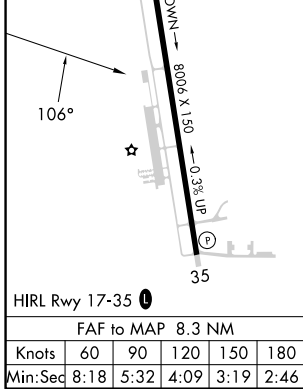
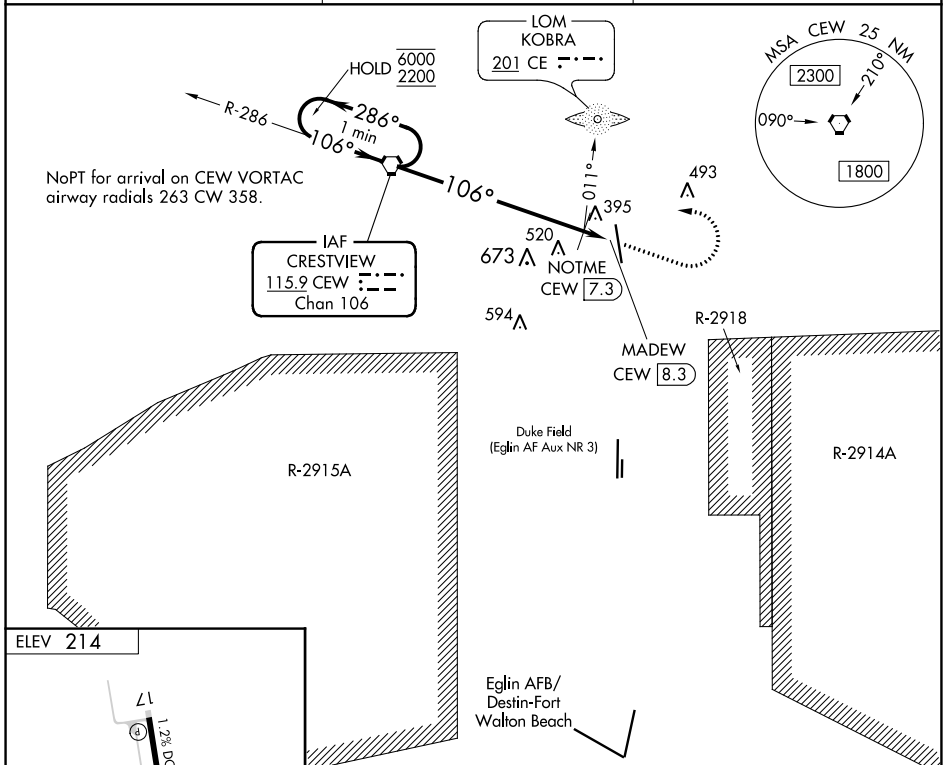


VORTAC CEW 115.9 Chan 106	APP CRS 106°	Rwy ldg TDZE Apt Elev N/A N/A 214
---	------------------------	--

VOR-A
BOB SIKES(CEW)

<p>⚠ Circling NA for Cat D west of Rwy 17-35. When local altimeter setting not received, use Eglin AFB altimeter setting and increase all MDA 60 feet and increase Circling Cat C/D visibility ¼ SM.</p>	<p>MISSED APPROACH: Climb to 1200 then climbing left turn to 2200 direct CEW VORTAC and hold.</p>	
<p>ASOS 119.275</p>	<p>EGLIN APP CON 124.05 284.65</p>	<p>UNICOM 122.95 (CTAF)</p>



One Minute Holding Pattern	CEW VORTAC	1200	2200	CEW
6000 ← 286°	→ 106°			
2200				
* 960 when using Eglin AFB altimeter setting.		NOTME CEW 7.3	MADEW CEW 8.3	
		7.3 NM	1 NM	
CATEGORY	A	B	C	D
C CIRCLING	900-1 686 (700-1)		900-2 686 (700-2)	900-2¼ 686 (700-2¼)
NOTME FIX MINIMUMS (ADF OR DME REQUIRED)				
C CIRCLING	700-1 486 (500-1)		820-1¾ 606 (700-1¾)	840-2 626 (700-2)

CRESTVIEW, FLORIDA					
Amdt 12B 28FEB19					
Knots	60	90	120	150	180
Min:Sec	8:18	5:32	4:09	3:19	2:46

SE-3, 07 SEP 2023 to 05 OCT 2023

SE-3, 07 SEP 2023 to 05 OCT 2023