

PTOMC TWO DEPARTURE (RNAV)

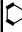
NE-3, 07 SEP 2023 to 05 OCT 2023


DEPARTURE ROUTE DESCRIPTION


TAKEOFF RUNWAY 17: Climb heading 171° to 900, then climbing right turn direct to cross PTOMC at 3000, do not exceed 210K until PTOMC, thence . . .


TAKEOFF RUNWAY 35: Climb heading 351° to 900, then climbing left turn direct to cross PTOMC at 3000, do not exceed 210K until PTOMC, thence . . .


. . . on heading 310°, maintain 3000, expect radar vectors on course. Expect filed altitude within ten (10) minutes after departure.


WESTMINSTER  **EMI**

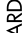
WOOLLY 

BALTIMORE  **BAL**

SWANN 

BROSS 

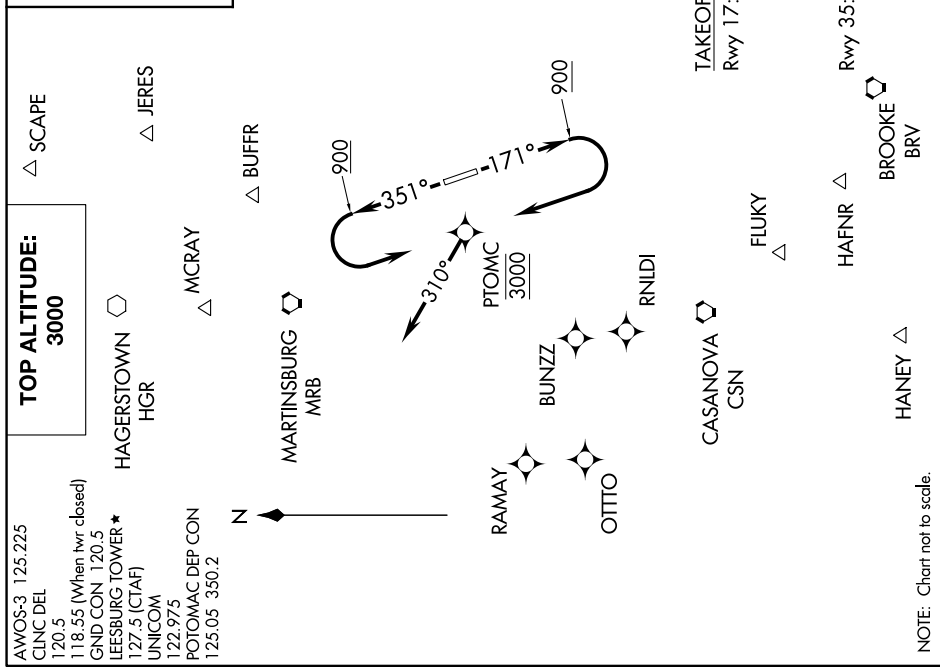
PALEO 

AGARD 

NOTE: DME/DME/IRU or GPS required.
NOTE: RNAV 1.
NOTE: Radar required.

TAKEOFF MINIMUMS:
 Rwy 17: Standard with minimum climb of 500' per NM to 900. Then 327' per NM to 3000.
 Rwy 35: Standard with minimum climb of 500' per NM to 900. Then 370' per NM to 3000.

TAKEOFF OBSTACLES:
 Rwy 17: Vehicle on roadway, 320' from DER, 565' left of centerline, up to 15' AGL/414' MSL. Building 167' from DER, 360' left of centerline, 22' AGL/401' MSL. Pole 958' from DER, 373' left of centerline, 32' AGL/421' MSL. Trees beginning 138' from DER, left and right of centerline, up to 100' AGL/464' MSL.
 Rwy 35: Terrain 96' from DER, 453' left of centerline, 381' MSL. Tree 1078' from DER, 525' left of centerline, up to 100' AGL/413' MSL. Pole 638' from DER, 642' right of centerline, 49' AGL/428' MSL.



NOTE: Chart not to scale.

PTOMC TWO DEPARTURE (RNAV)

NE-3, 07 SEP 2023 to 05 OCT 2023