

WAAS CH 87133 W30A	APP CRS 301°	Rwy Idg TDZE 1338 Apt Elev 1339	5511
--	------------------------	---	-------------

RNAV (GPS) RWY 30

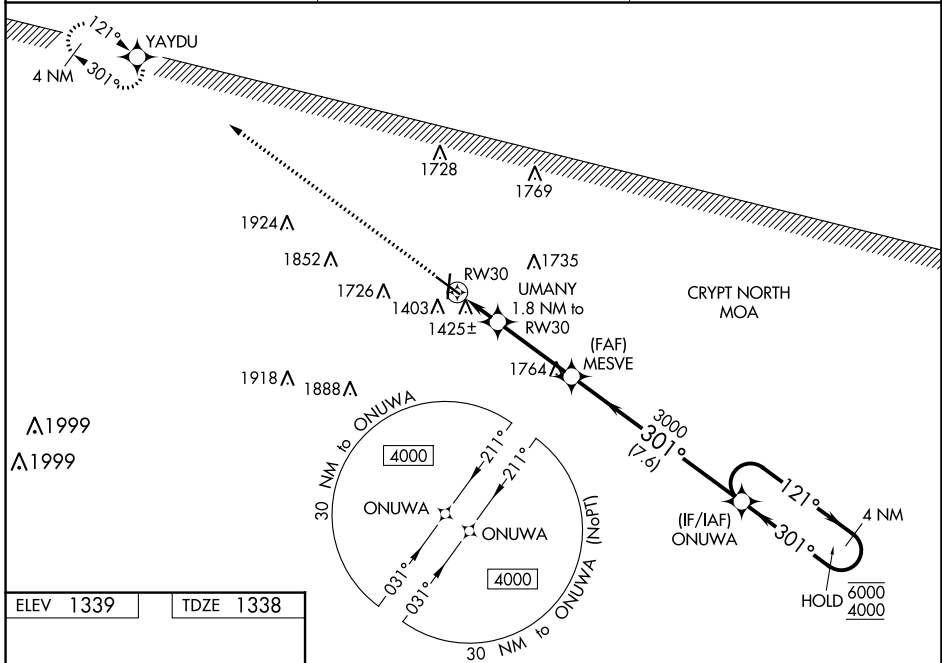
SPENCER MUNI (SPW)

RNP APCH-GPS.

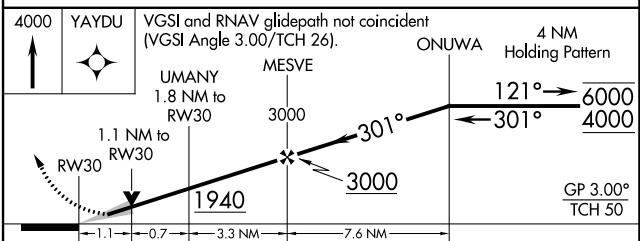
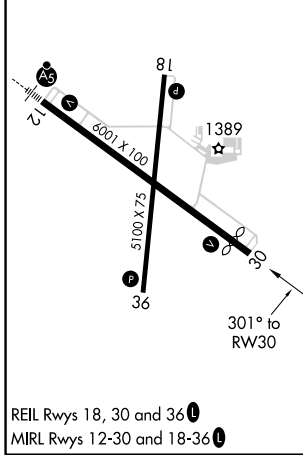
Baro-VNAV and VDP NA when using Estherville altimeter setting. For uncompensated Baro-VNAV systems, LNAV/VNAV NA below -20°C or above 54°C. When local altimeter setting not received, use Estherville altimeter setting: increase LPV DA to 1648 feet, LNAV/VNAV DA to 1683 feet and all visibilities 1/8 SM; increase all MDAs 60 feet and visibility Cats C and D 1/4 SM.

MISSED APPROACH:
Climb to 4000 direct YAYDU and hold.

ASOS 126.625	MINNEAPOLIS CENTER 127.75 257.7	UNICOM 123.0 (CTAF) 0
------------------------	---	---------------------------------



ELEV 1339	TDZE 1338
------------------	------------------



CATEGORY	A	B	C	D
LPV DA		1588 ^{-3/4}	250 (300 ^{-3/4})	
LNAV/VNAV DA		1623 ^{-7/8}	285 (300 ^{-7/8})	
LNAV MDA	1720-1	382 (400-1)	1720-1 ^{1/8}	382 (400-1 ^{1/8})
C CIRCLING	1760-1 421 (500-1)	1800-1 461 (500-1)	2100-2 ^{1/4} 761 (800-2 ^{1/4})	2100-2 ^{1/2} 761 (800-2 ^{1/2})

SPENCER, IOWA
MIRL Rwy 12-30 and 18-36

43°10'N-95°12'W

RNAV (GPS) RWY 30

NC-3, 07 SEP 2023 to 05 OCT 2023