

LOC I-Y-Y 108.3	APP CRS 125°	Rwy Idg 4000
		TDZE 1121
		Apt Elev 1125

LOC RWY 12

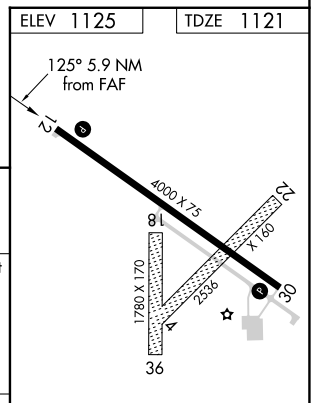
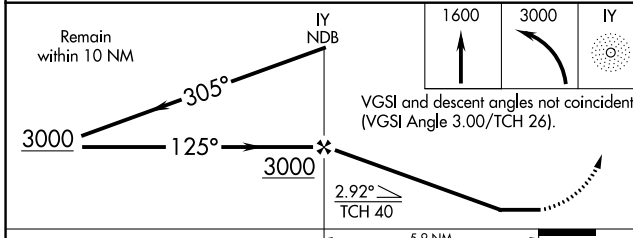
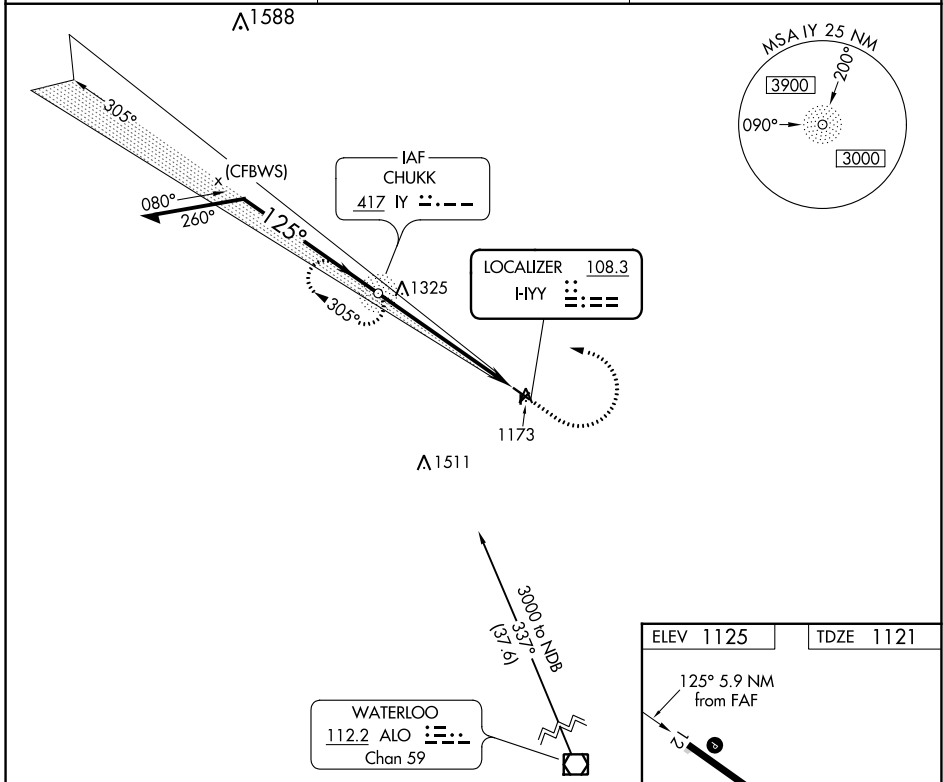
NORTHEAST IOWA RGNL (CCY)

ADF required for procedure entry.

- ⚠ Circling NA to Rwys 4-22 and 18-36. When local altimeter setting not received, use Waterloo altimeter setting and increase all MDA 120 feet, increase S-12 visibility Cat C $\frac{3}{8}$ SM and Circling Cat C $\frac{1}{2}$ SM.

MISSED APPROACH: Climb to 1600 then climbing left turn to 3000 direct IY NDB and hold.

AWOS-3 125.525	WATERLOO APP CON * 118.9 251.15	UNICOM 122.8 (CTAF) 0
--------------------------	---	---------------------------------



CATEGORY	A	B	C	D
S-12	1560-1	439 (500-1)	1560-1¼ 439 (500-1¼)	NA
C CIRCLING	1560-1 435 (500-1)	1580-1 455 (500-1)	1760-1¾ 635 (700-1¾)	NA

MIRL Rwy 12-30 0
REIL Rwys 12 and 30 0

FAF to MAP 5.9 NM

Knots	60	90	120	150	180
Min:Sec	5:54	3:56	2:57	2:22	1:58

NC-3, 07 SEP 2023 to 05 OCT 2023

NC-3, 07 SEP 2023 to 05 OCT 2023