

STURGIS, MICHIGAN

AL-5362 (FAA)

23054

NDB IRS <b>382</b>	APP CRS <b>236°</b>	Rwy Idg TDZE Apt Elev	<b>3601</b> <b>925</b> <b>925</b>
-----------------------	------------------------	-----------------------------	-----------------------------------------

# NDB RWY 24

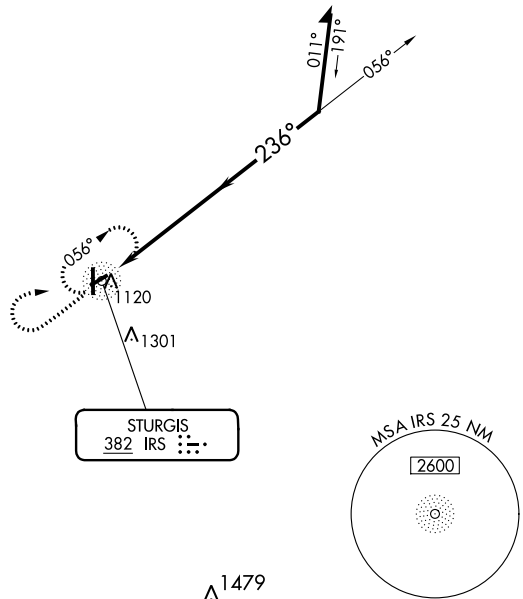
KIRSCH MUNI (IRS)

RADAR required for procedure entry.

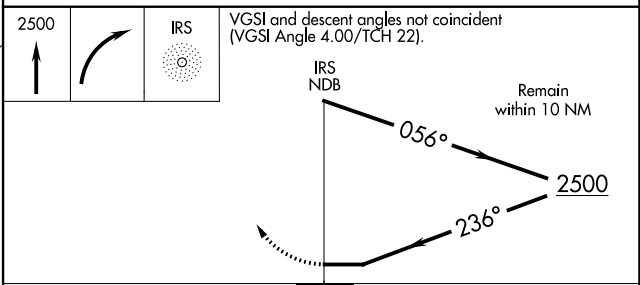
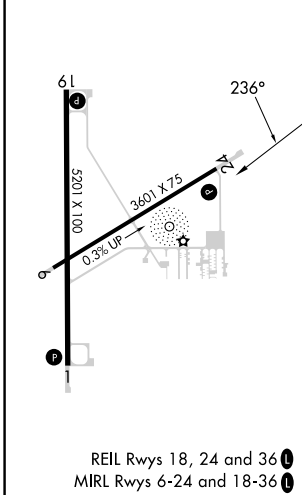
**∇** Circling Rwy 6 NA at night.  
**▲** Rwy 24 helicopter visibility reduction below ¼ SM NA.

MISSED APPROACH: Climb to 2500 then right turn direct IRS NDB and hold.

AWOS-3 <b>121.325</b>	GREAT LAKES APP CON * <b>121.2 239.25</b>	CLNC DEL <b>118.325</b>	UNICOM <b>123.05</b> (CTAF) <b>0</b>
--------------------------	----------------------------------------------	----------------------------	-----------------------------------------



ELEV 925	TDZE 925
----------	----------



CATEGORY	A	B	C	D
S-24	1500-1	575 (600-1)	1500-1½	575 (600-1½)
<b>☐</b> CIRCLING	1500-1	575 (600-1)	1620-2 695 (700-2)	1620-2¼ 695 (700-2¼)

STURGIS, MICHIGAN  
Amdt 11 19MAY22

41°49'N-85°26'W

# KIRSCH MUNI (IRS)

## NDB RWY 24

EC-1, 07 SEP 2023 to 05 OCT 2023

EC-1, 07 SEP 2023 to 05 OCT 2023