

WAAS CH 70732 W23A	APP CRS 227°	Rwy ldg 3597 TDZE 1258 Apt Elev 1278
--	------------------------	---

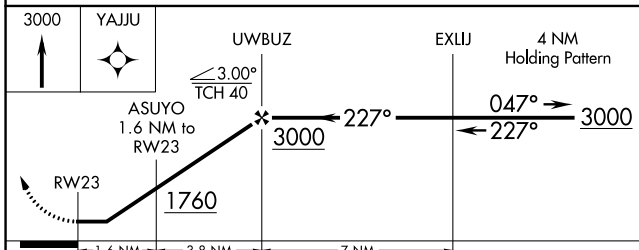
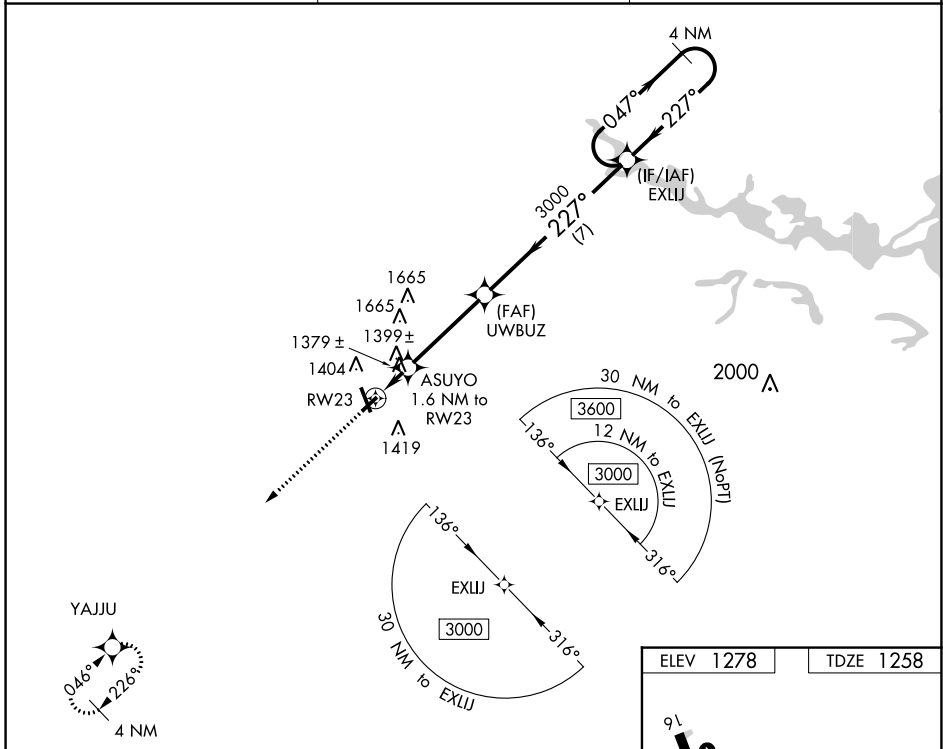
RNAV (GPS) RWY 23

MARSHFIELD MUNI (MFI)

▽ DME/DME RNP-0.3 NA. Helicopter visibility reduction below 3/4 SM NA. When local altimeter setting not received, use Central Wisconsin altimeter setting and increase all MDA 60 feet, increase LP and LNAV visibility Cat C/D 1/4 mile.

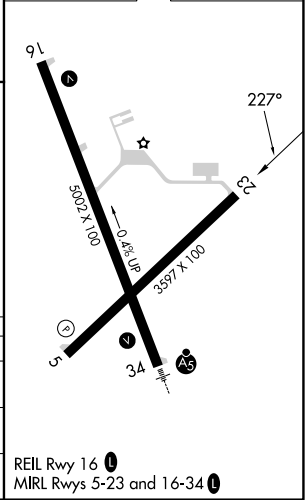
▲ MISSED APPROACH: Climb to 3000 direct YAJJU and hold.

ASOS 121.575	MINNEAPOLIS CENTER 124.4 317.7	UNICOM 123.0 (CTAF) 0
------------------------	--	---------------------------------



CATEGORY	A	B	C	D
LP MDA	1640-1	382 (400-1)	1640-1 1/8	382 (400-1 1/8)
LNAV MDA	1660-1	402 (400-1)	1660-1 1/8	402 (400-1 1/8)
C CIRCLING	1760-1	482 (500-1)	2020-2 1/4 742 (800-2 1/4)	2020-2 1/2 742 (800-2 1/2)

ELEV 1278	TDZE 1258
-----------	-----------



EC-3, 07 SEP 2023 to 05 OCT 2023

EC-3, 07 SEP 2023 to 05 OCT 2023