

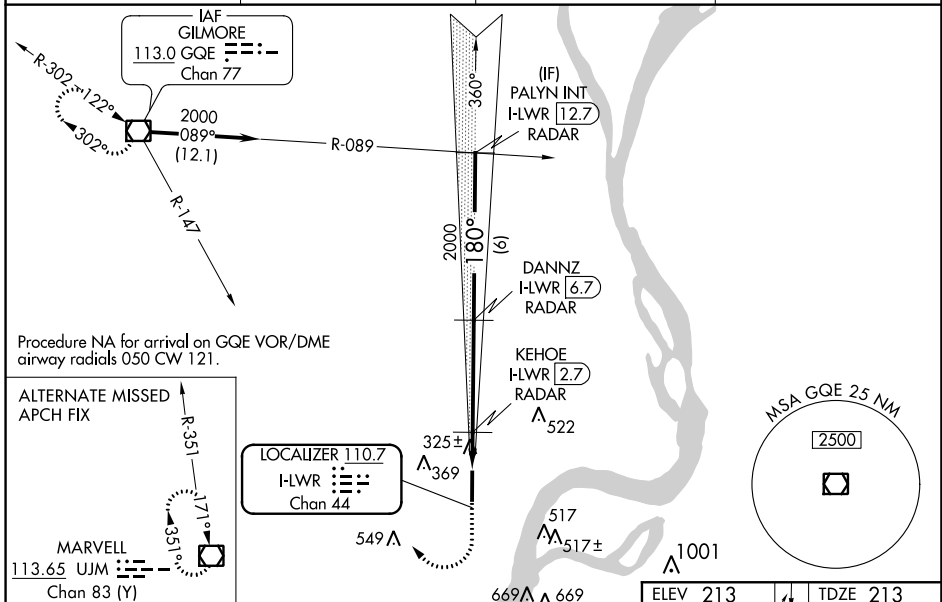
LOC/DME I-LWR 110.7 Chan 44	APP CRS 180°	Rwy Idg 6003 TDZE 213 Apt Elev 213
---	------------------------	---

ILS or LOC RWY 17

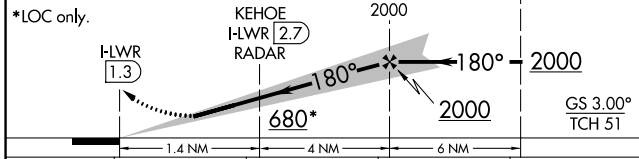
WEST MEMPHIS MUNI (A W M)

DME or RADAR required.	MALSR
<p>NA For inop ALS, increase S-LOC 17 Cat C/D visibility to 1$\frac{1}{2}$ SM and KEHOE FIX MINIMUMS S-LOC 17 Cats C/D visibility to 1 SM.</p>	<p>MISSED APPROACH: Climb to 1000 then climbing right turn to 2000 on GQE VOR/DME R-147 to GQE VOR/DME and hold.</p>

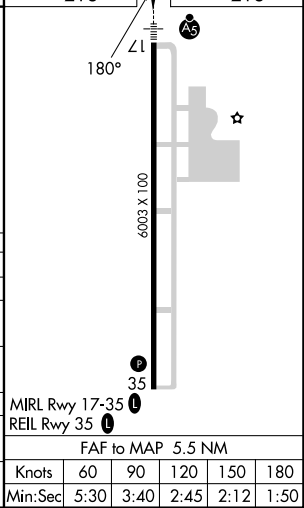
ASOS 118.175	MEMPHIS APP CON 119.1 291.6	CLNC DEL 121.7	UNICOM 123.05 (CTAF) 1
------------------------	---------------------------------------	--------------------------	---



1000	2000	GQE	DANNZ I-LWR (6.7) RADAR	PALYN INT I-LWR (12.7) RADAR



CATEGORY	A	B	C	D
S-ILS 17	413- $\frac{1}{2}$ 200 (200- $\frac{1}{2}$)			
S-LOC 17	680- $\frac{1}{2}$ 467 (500- $\frac{1}{2}$)	680-1 467 (500-1)		
CIRCLING	680-1 467 (500-1)	740-1 527 (600-1)	800-1 $\frac{1}{2}$ 587 (600-1 $\frac{1}{2}$)	920-2 $\frac{1}{4}$ 707 (800-2 $\frac{1}{4}$)
KEHOE FIX MINIMUMS				
S-LOC 17	580- $\frac{1}{2}$ 367 (400- $\frac{1}{2}$)	580- $\frac{5}{8}$ 367 (400- $\frac{5}{8}$)		
CIRCLING	640-1 427 (500-1)	740-1 527 (600-1)	800-1 $\frac{1}{2}$ 587 (600-1 $\frac{1}{2}$)	920-2 $\frac{1}{4}$ 707 (800-2 $\frac{1}{4}$)



MIRL Rwy 17-35 1					
REIL Rwy 35 1					
FAF to MAP 5.5 NM					
Knots	60	90	120	150	180
Min:Sec	5:30	3:40	2:45	2:12	1:50

SC-1, 07 SEP 2023 to 05 OCT 2023

SC-1, 07 SEP 2023 to 05 OCT 2023